

feeling at home

Welcome to Zürich. Settling-In Tips and Useful Information.



Table of Contents



FLAG OF
CANTON ZÜRICH

3	General Information about Switzerland and Zürich
6	Map of Zürich – City and Canton
7	Customs, Visas and Permits
8	International Moving
10	Importing
12	Accommodation
17	Furniture Rental
18	Cost of Living
21	Waste Disposal and Recycling System
22	Schooling and Education
26	Banking
28	Insurance
30	Legal, Tax and Compliance
31	Medical
32	Post Office
33	Public Transport
35	Driving
38	Festivities in and around Zürich
39	Shopping
42	International Clubs and Societies
43	Places of Interest
49	Public Holidays
50	Switzerland-wide Coverage by Prime Relocation

General Information about Switzerland and Zürich

Switzerland consists of 26 cantons, of which Zürich has the largest population and is economically very important. Switzerland is proud of its four official languages: German, French, Italian and Romansch.



Switzerland is split into different linguistic areas, such as the French area (in the west), the German area which is mostly in the north and the Italian area which forms the south east. Romansch is spoken in the southeastern Canton of Graubünden only.

Zürich

Welcome to Zürich! The city of Zürich lies in northern Switzerland in a beautiful setting. On a clear day there is a stunning view of the Alps and mountain ranges in the distance from the city. Zürich is a bustling cosmopolitan city, offering a range of cultural events and is an international business centre. The city lies 408m above sea level at the northern end of Lake Zürich. Its highest point is the Uetliberg or Uto Kulm at 871m. Zürich comprises 12 districts or “Kreise” which vary immensely in their character.

Zürich is undoubtedly a fabulous city to live in and has been a consistent front-runner in the Credit

Suisse Mercer quality of life awards over the past few years. The criteria evaluated include employment, housing, educational facilities, personal safety, medical care, transportation and recreational facilities. In addition, political stability, the low crime rate and high wages are all contributory factors in making Switzerland and Zürich in particular, a very attractive place to live. Once you have experienced life here, you may not want to leave.

English is widely spoken and understood by shop owners and restaurant staff alike, but it is of course beneficial to learn at least some words of German so that you can order your drinks in the local language. The Swiss appreciate every small effort to learn their language. Be aware that road signs are not written in English, so be careful when driving.

The city of Zürich has a very good public transport system with a wide range of bus and tram routes – the roads can become blocked at peak periods, so it is advisable to use public transport whenever possible. The system is excellent, and thanks to the dense rail network, travel times are very short.

With the Uetliberg to the west, the Pfannenstiel to the east and the Bachtel in Zürich’s highlands to the south-east of the city – there



ULRICH ZWINGLI
THE PROTESTANT REFORMER
MONUMENT IN FRONT
OF THE WASSERKIRCHE IN
ZÜRICH.

General Information about Switzerland and Zürich

USEFUL LINKS

ZUERICH.COM
ZH.CH
STADT-ZUERICH.CH

EVENTS AND CULTURE:
GUIDE.LOCAL.CH/EN/ZURICH

ZÜRICH TOURISM:
ZURICHTOURISM.CH

TOURISM IN GENERAL AND
EXCURSIONS IN SWITZERLAND:
MYSWITZERLAND.COM

INFORMATION ON ZÜRICH AND
ITS SURROUNDINGS:
GREATERZURICHAREA.CH



“UETLIBERG”
THE ZÜRICH PANORAMIC
MOUNTAIN.

WELCOME EVENT
CITY OF ZÜRICH



are endless hiking and walking possibilities in all seasons of the year. The Alps are not far away either – an hour by car or train – so proper hikes as well as all of the winter sport activities are available almost on your doorstep.

Population

Zürich is one of the most densely populated of Switzerland’s 26 cantons. The city has a population of around 423,000 and the whole Canton Zürich just over 1.5 Mio. inhabitants. Zürich is one of the world’s leading financial centres with banking and insurance featuring high on the list of companies.

However it is not only a business centre; it also offers a diverse cultural selection of theatres, museums, art galleries, cinemas, concerts, clubs, exhibitions and restaurants. We are sure you will enjoy your time living in Zürich and will appreciate Zürich as a lively, cosmopolitan city.

Climate and Seasons

The seasons in Switzerland are very well defined. In spring (March to May) you can witness the trees blossoming and the meadows turning green. In summer, air temperatures reach between 25–35 C (centigrade) and the water temperature of the lake between 19–23 C degrees, which is perfect for swimming. From September to November Autumn shows itself through the leaves changing colours and falling off the trees. In winter (November to February), everything is blanketed in snow and the landscape changes dramatically again.

Drinking water

The water distributed in Switzerland meets very high-quality standards. Eighty percent of the water comes from underground sources, the rest is taken from the lakes. The establishment of groundwater protection zones makes it possible to distribute half of this water without having to treat it. It can be drunk from every tap without posing a health hazard.

Tap water in Switzerland also has a much better ecological balance than bottled mineral water. Source: Federal Food Safety and Veterinary Office FSVO.

Telephone

If calling from Switzerland, you need to enter the international country code. For example, for Germany the international country code is «+49», for France «+33». The country code is followed by the area code (without the «0») as shown in the following example: «+49221123456».

As a rule, the «+» sign appears if you press and hold the «0» key for a few seconds.

Smoking policy

Smoking has been forbidden in Switzerland in enclosed areas when they are open to the public or serve as a workplace for more than one person. Hence, it is forbidden to smoke in restaurants, public buildings and offices. Smoking is also forbidden on public transport. Smoking is permitted in separate smoking rooms, outdoors and in private homes.

Time zone

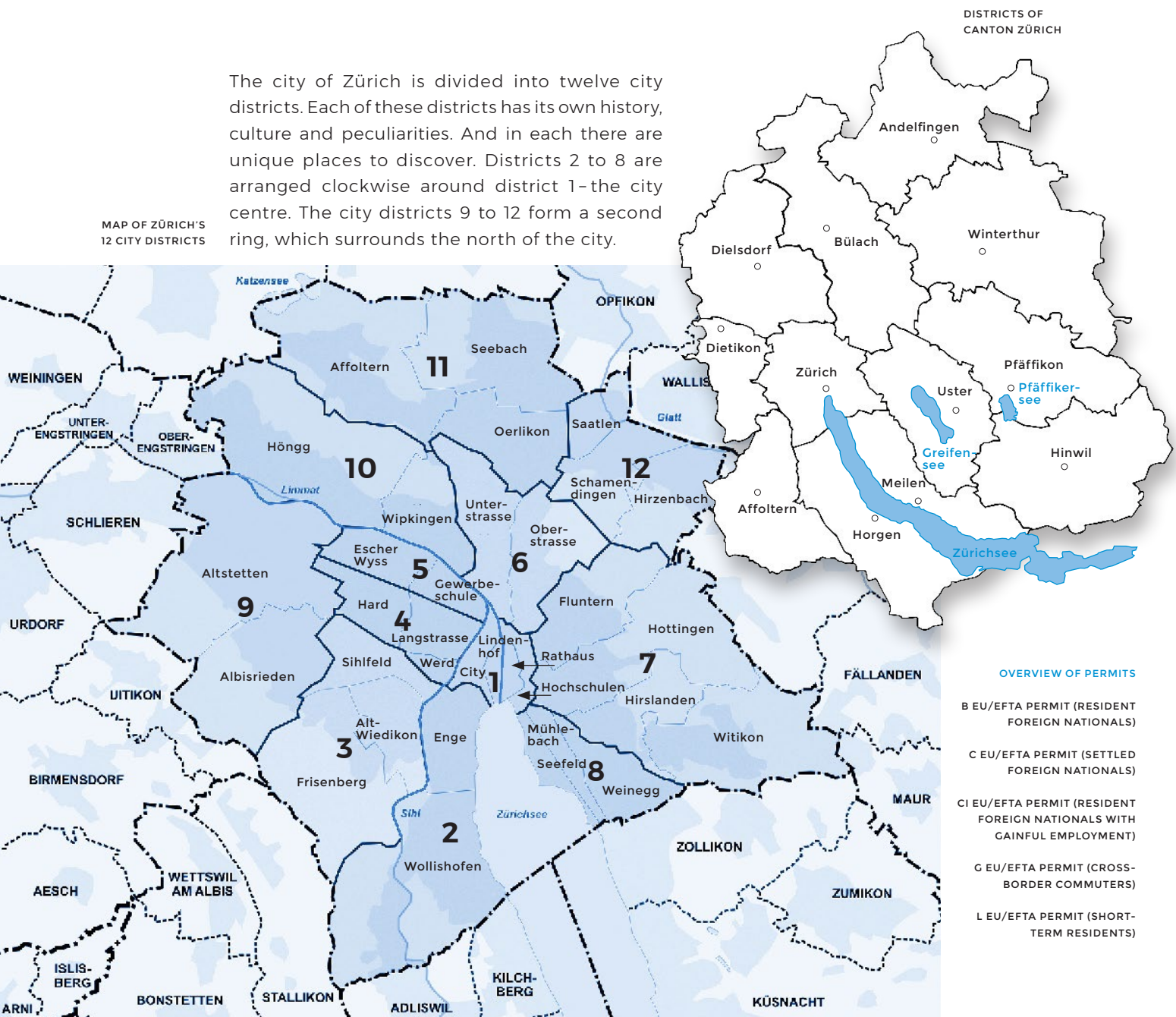
During the winter, Central European Time (CET) applies in Switzerland. From the end of March to the end of October, Summer Time applies (CET +1 hour).

EVENING TWILIGHT IN ZÜRICH. ©PHOTO RICO REUTIMANN



Map of Zürich – City and Canton

The city of Zürich is divided into twelve city districts. Each of these districts has its own history, culture and peculiarities. And in each there are unique places to discover. Districts 2 to 8 are arranged clockwise around district 1 – the city centre. The city districts 9 to 12 form a second ring, which surrounds the north of the city.



MAP OF ZÜRICH'S
12 CITY DISTRICTS

DISTRICTS OF
CANTON ZÜRICH

OVERVIEW OF PERMITS

- B EU/EFTA PERMIT (RESIDENT FOREIGN NATIONALS)
- C EU/EFTA PERMIT (SETTLED FOREIGN NATIONALS)
- CI EU/EFTA PERMIT (RESIDENT FOREIGN NATIONALS WITH GAINFUL EMPLOYMENT)
- G EU/EFTA PERMIT (CROSS-BORDER COMMUTERS)
- L EU/EFTA PERMIT (SHORT-TERM RESIDENTS)

Customs, Visas and Permits

Customs Regulations

Here is some important information regarding Swiss customs. When importing goods from abroad, the duty-free limit is CHF 300 on the net value of your shopping. If it exceeds this amount then it is mandatory to pay the duty. It is forbidden to combine the duty free amount together with other people. Further information can be found under: www.zoll.admin.ch.

If you buy goods outside of Switzerland and then bring your goods into Switzerland, you can get your foreign VAT refunded, make sure the sales person provides you with a form for a refund, which you can show at the border customs.

Visas and Permits

Documents

To live and work in Switzerland, you require a residency permit, issued by the local cantonal authorities. For long-term assignments, it is advisable to bring important original documents with you, such as birth certificates, marriage certificates, insurance policies, medical prescriptions, employment information, academic certificates and entry permits.

Since some permits have to be applied for from your home country, you should start this process well in advance of your move to Switzerland. The Agreement on the Free Movement of Persons makes it easy for EU/EFTA nationals to enter and stay in Switzerland. The rules are more restrictive for people from other countries (third countries).

The permit you require differs depending on the purpose and duration of your stay.

EU and non-EU citizens' rights

As an EU citizen you have the right to settle in Switzerland and set up your own business, provided that you do so assuming full responsibility and at your own risk. Spouses and children under 21 may also settle and work in Switzerland as may other direct relatives. Non-EU nationals can only get a Swiss work permit if their future employer proves there is no Swiss, EU or EFTA State national available to do the job. As a rule, qualified, indispensable management staff are permitted to enter the country.

Registration at the local district office

Registration needs to be completed within 14 days at the local district office as soon as you move into your house or apartment. The following documents are required when you do so:

- an employment contract
- a tenancy agreement for your new apartment
- valid identity documents or passport
- health insurance certificate (show within 3 months)
- civil status documents such as a family booklet and marriage certificate, birth certificates of children

Whilst at the registration office you will be invited to make an appointment to have a biometric photo and fingerprints taken at the "Migrationsamt" in Oerlikon for your new identity card. The card will then be sent to you by post, so it is important that your name is on the post box of the (temporary) apartment.

USEFUL LINKS

[APPLY FOR A PERMIT ONLINE](#)
ZH.CH > SEARCH:
APPLYING WORK

[FEDERAL OFFICE OF IMMIGRATION, INTEGRATION AND EMIGRATION](#)
SEM.ADMIN.CH

[VISA INFORMATION](#)
EDA.ADMIN.CH > SEE MENU:
ENTRY INTO SWITZERLAND AND RESIDENT

[EMBASSIES](#)
EDA.ADMIN.CH > SEE MENU:
TRAVEL ADVICE & REPRESENTATIONS

[SWISS CUSTOMS](#)
BAZG.ADMIN.CH

[REGISTRATION LOCAL DISTRICT OFFICE](#)
STADT-ZUERICH.CH > SEARCH:
RESIDENTS' OFFICE



TOWNHALL
"ZÜRCHER STADTHAUS"

Moving to and from Switzerland

The task of moving houses may appear to be an easy project on first sight, all you need to manage is packing your belongings and loading them on to a truck, and off you go. However, anybody who has managed a move on their own will have realised that there is a little more to it than that. Especially when you are planning an international move.

In Switzerland, you will find many domestic moving specialists who offer the transport of household goods, “one man and a truck” companies. In terms of pricing, you may be surprised at how the costs vary. However, if you are planning an international move, you will want to look out for a professional company with the necessary experience, knowledge and most of all a good partner network around the globe.

Separate the apples from the oranges

Anybody who is involved with an international move will soon realise that there is much more to consider than the actual transport of your household goods. The expertise in law enforcements and customs regulations is crucial, and well-established partnerships within a network of worldwide partners are key for a successful and stress-free international move. You will also want to be sure that the company you choose has experienced and trained staff. They know the difference between packing for a domestic move, and meticulous preparation for an international move. Browse homepages, read customer reviews on Google and keep an eye out for the FAIM Certification, the highest quality certification for international moving companies – you will soon realise who the professionals are.

Because moving is personal

Planning your move is all about making choices. Obtain quotations from international moving companies, and make sure that they offer you a professional survey at your residence on site or virtually by video – free of charge. Every move tells a different story, and every person will have a different household with valuable items and furniture – no matter if the value is in terms of cost, or sentimental reasons. Be sure to point out your favourites during the survey, and mention any items that you feel are worth the extra care and might require additional or tailored packaging. An experienced surveyor will also inform you about customs regulations in your destination country, and will point out any items that might be difficult or even restricted from importing.

Eyes open for hidden charges

Based on the survey, you should receive a quotation tailored to your needs. Be sure to check the quotation for the specialities discussed during the survey! Also, when you are comparing quotations, pay close attention to the “not included” services. There could be hidden costs... for example, the port charges at destination, or the premiums for transport insurance, which can vary substantially. The bottom-line price will give you an idea for the budget, but you will definitely want to include the insurance premium for an adequate comparison.

Do not underestimate your “gut feeling”.

The actual price for your move should not be the only decision criteria for the chosen company. Listen to your inner voice, and do not forget that the company you choose will be handling your

most private life. It is not just a move of goods; it is a move of emotions! You are leaving your current comfort zone to explore a new country, new home, new work place, and a new culture. You will have all kinds of emotions to deal with, and you will be more than happy to delegate the physical move. Someone who leaves you with a trustworthy impression – for your peace of mind!

Kehrli + Oeler AG – we move lives...

Their expertise is based on a long tradition that goes back to 1904! This history of experience, combined with constant innovation, is the secret of their success. Their network of worldwide partners is handpicked, personally known, and based on long-term relationships. With Kehrli + Oeler, you can rest assured that your household goods and belongings will be moved anywhere in the world, efficiently and with the utmost care!



OVER 100 YEARS OF EXPERIENCE
IN THE MOVING BUSINESS.
ABOUT 500,000 SUCCESSFUL
MOVINGS.
Ø 4.7 TO 5 STARS ON ALL RATING
WEBSITES.

Importing

Cars

In most cases, you can import your car into Switzerland tax-free as part of your household moving goods, if you have owned/used it for the last 6 months prior to your official entry date in Switzerland. Foreign licence plates may be used for up to one year after your arrival, provided that your foreign insurance remains valid. At the time of importation, present the completed application form (18.44 Household Effects) to the customs office at the border for importation. Once the car is imported, you need to register it at your canton's driver and vehicle licensing office (Strassenverkehrsamt).

Importing from a non-EU country

If you are considering importing your car from outside the EU, it's important to get all the information first. It can be costly and complicated, and your current vehicle may need adapting for Swiss road conditions.

Importing from an EU country

If you are bringing your car from a country within EU, you can simply drive the car across borders into Switzerland. However, official car import to Switzerland involves several steps and considerable paperwork.

In both cases **Autociel** is happy to assist you as follows:

Step 1

Once you get in touch with them, they provide a quote that includes the cost of importing and registering the car under Swiss license plates.

Step 2

Once you have submitted all your details, their experts investigate further and explore whether your car is eligible for tax free import.

Step 3

Autociel orders all required paperwork for the car.

Step 4

If the car is less than 6 months old, they arrange for a reduced CO₂ fee, that benefits you further.

Step 5

With all the paperwork in order, they organise the import process.

Step 6

They help you in getting an advantageous insurance quote from their partner insurances.

Step 7

Finally, they arrange the compulsory car testing by the government, get the car registered under Swiss license plates and deliver it to you, key in hand, ready to drive.

Things to keep in mind

Right Hand Drive (RHD)

If you are moving from the UK, chances are that your car is a Right-Hand Drive (RHD). Please note that it is difficult to drive a RHD car in Switzerland and quite often the expatriates do not get used to it. If this is the case, please note, there is almost no market for a RHD car here in Switzerland. In most instances, you need to return it to the UK, in order to sell it. This is not the easiest thing! Therefore, we do not recommend to import your RHD car to Switzerland.

Insurance cover

If you qualify to import your car tax-free as a household moving good (you must have owned the car for more than 6 months), you have 12 months to register your car under Swiss license plates, after

your arrival in Switzerland. However, be careful, often the insurance company in your homeland does not cover your car in Switzerland. So, it is important for you to check with your insurance company whether they offer any cover in Switzerland once you settle in and if yes, then for how long they do so. Note that 99% of non-EU insurance companies (US, Canadian...) will refuse to cover your car in Switzerland or even in the EU. This means, it is wise to register it as soon as you arrive here.

Non-EU cars

Satellite navigation

Often the SatNav fails to work properly or not at all in Switzerland. While it is possible to update it, this can be extremely complicated and costly.

Radio frequencies

If you are importing your car from outside of Europe, chances are only 50% all radio frequencies will work in Switzerland.

Servicing and repairing

As American cars are different from those in Europe, even those manufactured by European brands, there might be difficulties in servicing and repairing them in Switzerland, as well as in reselling them. We normally recommend selling them at 20% under the market price for comparable cars in Switzerland.

Contact Autociel

Since 2002, **Autociel** is the independent car expert in Switzerland. If you need help with your car or to lease one, you may contact them directly through

jerome.chessex@autociel.ch and have a look at their website **www.autociel.ch/expat/** for more information.

Pets

Travelling with pets requires a great deal of preparation. Vaccinations, licences or other documents may be needed. Special regulations apply to travel with dogs, cats and ferrets because these pets can be affected by rabies. It is compulsory for all dogs to be registered in the ANIS database and they must be microchipped. The Animal Identity Service (ANIS) operates throughout Switzerland and provides an independent database for pets. Within 10 days of your arrival in Switzerland, dogs must be taken to a veterinary doctor. The vet takes care of registration with the ANIS (including microchip or tattoo number) and conducts a medical check-up of your pet. You will get an international health certificate verifying that they have been vaccinated against rabies. As a dog owner, you are required to register your animal(s) in your Swiss place of residence. Your dog should to be insured under your liability insurance. Check with your private insurance provider to make sure pet insurance is part of the package.

If you plan to take your pet on trips: Dogs, cats and ferrets need at least a pet passport, a microchip and a valid rabies vaccination. The exact requirements are determined by the country to which you are travelling. The conditions for re-entry must be met if you wish to return to Switzerland. Some dog breeds are not accepted in Switzerland or certain cantons. Owners should contact vet authorities in their canton for more information.



THE MOST FAMOUS DOG IN SWITZERLAND "BARRY", ACCORDING TO A LEGEND, HE HELPED TO SAVE OVER 40 HUMAN LIVES.



Accommodation

Accommodation in Switzerland can be hard to find and expensive, especially when compared to other European countries. Zürich, Zug and Geneva have the highest rental prices in Switzerland. The rental system here can appear complicated and it is advisable to have someone on your side to advise you of your rights and to represent you with the local landlord and agents.

Areas in and around Zürich

The most popular area is district 8 or Seefeld as it is near the lake and city and has restaurants, exclusive shops, clubs and bars. The other side of the lake is popular too – district 2, Enge and Wollishofen where prices are a little lower. Höngg up on the hillside above the city is also popular with families – it is the greenest, family area of Zürich. The

eastern side of Zürich – the gold coast – is especially popular with expats due to the beautiful sunsets and lake views. Outside of the city, Adliswil, Thalwil, Horgen and Winterthur are good alternatives for families and the commuting time to Zürich is not more than 20 mins by public transport.

Property Size

Generally the indicated size of the apartment or house does not include the kitchen, bathroom or dining rooms. Usually an open kitchen, dining room and living room counts as one-and-a-half rooms. Below you will see an example of a 3.5 room apartment which features two bedrooms and an open plan living/dining/kitchen area which is so typical of accommodation here.



Description of Housing

2.5 rooms

1 bedroom, open plan living room and dining room count as 1.5 rooms

3 rooms

Possibly 1-2 bedrooms plus a smaller living room and separate dining or study

4.5 rooms

3 bedrooms, open plan living room and dining room count as 1.5 rooms

What you can find

Houses are hard to find as they are in short supply; it is more common to find apartments with a small balcony or terraced apartments with large terraces. When applying for a property, you rarely deal with the actual owner, more commonly a real estate agent will be coordinating the rental/purchase. (Expats mostly decide to rent properties first and buy later. In fact, 75% of the Swiss live in rented accommodation and are not home owners). Apartments are usually let unfurnished, but they come with complete kitchens, including a dishwasher, oven and stove. Washing machines and tumble dryers are available for common share and sometimes apartments are equipped with their own washing machines. Furnished accommodation is more difficult to find and is expensive.

Properties in Switzerland never come with curtains or light fittings, these need to be purchased by the tenant. They do, however, come fitted with shutters and /or blinds.

Electricity

The electric current in Switzerland is AC 220 – 240 volts, frequency 50 Hz. If you are coming from the United States, you will require a step-down transformer, which can be purchased at an electrical store, but it is advisable to leave your US appliances at home and buy new ones here for safety reasons. Most sockets are for three-pin plugs.



How to rent a property

Making a good impression with the application form is essential. When deciding on an apartment, you will need to be fairly, quick and flexible as to when you would like the contract to begin. Leases may start on 1st or 16th of each month and are usually open ended but one year minimum. A deposit of between one and three months rent have to be paid into a security holding account, before you can get the keys. The deposit amount will be refunded back to you along with any accrued interest at the end of the rental period. The cost for possible damages in the apartment will be deducted. Rent should be paid monthly in advance.



Accommodation

General House Rules in Switzerland

Consideration

In order to establish a good relationship among all tenants, everybody in an apartment building is committed to mutual consideration. Every member of the household should follow the house rules, which you will receive from the landlord /agency in writing.

Noise

Loud noise is to be avoided, especially at night. Playing musical instruments is not allowed before 8am and after 9pm. Noise should be kept to a minimum so as not to disturb others. Do not mow the lawn during lunch and dinner times as well as after 5pm on Saturdays and all day Sundays and public holidays. In some apartment blocks washing is not permitted on Sundays because of the noise created by the washing machines.

Cleanliness

Tenants are asked to keep the stairs, entrance and other common rooms free of obstacles and tidy. Unless a caretaker is in charge of the cleaning of common areas such as staircase, cellar aisles, the tenants should take care of it themselves. Each tenant should clean his/her part of the staircase (including windows). Rubbish bags are to be properly tied and put in the bins provided. Bikes, mopeds, prams, children's bicycles, etc., need to be stored in the designated areas.

Common shared rooms

Unless arranged otherwise, shared laundry rooms and their appliances are to be used according to a schedule provided by the landlord. Each tenant is entitled to sole use of such rooms during the appointed times (Usually on weekdays between 7am and 10pm). After use, the rooms and appliances should be cleaned by the user. The laundry should be dried in the designated areas such as a laundry room, drying room or outside.

Heating

During the winter months, no heating in any room is to be turned off completely. The living room and other rooms should be aired only briefly (10 minutes a day). Cellar and attic windows must be closed if temperatures fall to below freezing point. In apartments with floor heating only suitable carpets are to be installed, otherwise the landlord will not take responsibility for insufficient heating.

Miscellaneous

The main door of the apartment block should remain locked after 8pm unless otherwise specified.

Security regulations displayed in the elevators are to be observed. Any operational disorders are to be reported immediately to the caretaker or landlord. The elevator is to be handled with the necessary care.

Sun blinds and shutters are not to remain extended during wind and rain. Please pull them in when you go out to avoid them becoming damaged.

When barbecuing on balconies or in gardens, tenants are to be considerate towards neighbours.

Shaking out and beating of containers, covers etc., from windows or balconies is to be avoided as well as the beating of carpets before 7am and after 8pm and during lunch times as well as on Sundays and public holidays.

Satellite dishes are only permitted if authorised by the landlord.

Parking is only permitted in on visitor's spaces for a limited period. Please park your car in its designated spot.

Property Prices

The following table provides you with an estimate of property rental prices in different areas of Zürich. All properties listed below are unfurnished.

City / Village	Rooms	Range	Average
Right side of lake	3.5	3,000 – 5,000	4,000
	4.5	4,000 – 5,000	4,500
	5.5	5,000 – 8,000	6,500
Left side of lake	3.5	3,000 – 4,000	3,500
	4.5	3,500 – 5,500	4,500
	5.5	4,500 – 7,000	5,750
City Centre Zürich	3.5	2,500 – 4,500	3,500
	4.5	4,000 – 5,000	4,500
	5.5	5,000 – 8,000	6,500

PRICES:
ALL NOTED IN SWISS FRANCS
(CHF) PER MONTH AND
INCLUDE 10% MONTHLY UTILITY
COSTS.



TEMPORARY LIVING

my nest

SERVICED APARTMENTS IN SWITZERLAND

NEST
HOME IS WHERE YOUR WIFI
CONNECTS AUTOMATICALLY.

mynest.ch

Furniture Rental

Pisler Furniture Rental

For more than 20 years, Pisler Furniture Rental has been providing exceptional services to expatriates coming to Switzerland. The key to their success is the awareness of the importance of their clients' expectations.

Short term rental

You have decided to move your furniture to your new place in Switzerland and your container will arrive within the next few weeks. Pisler Furniture Rental furnishes and equips your new home with light and easy to maintain furniture. You select exactly what you need and they provide the furniture and household items requested in a few hours.

You don't waste money paying for a hotel stay or time looking for an expensive furnished accommodation.

Long term rental

You prefer leaving your furniture in your country and avoid the hassle of shipping your furniture back and forth. You find your new place and Pisler help you to tailor your home down to the smallest details. Pisler Furniture Rental has solid connections with European suppliers which allows them to provide your new home with bespoke home furnishings. You have the option to select materials, fabrics, colours, sizes and shapes of furniture to ideally match your new home. Furthermore, they provide made to measure curtains.

By working closely with their customers, they meet your personal preferences which they then align to your monthly budget and desires.

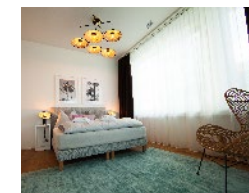
Sustainability

Pisler Furniture Rental is increasingly conscious of how the furniture they buy can impact the planet. Therefore, they select suppliers that can supply sustainable products; furniture made from recycled materials, responsibly sourced and with reusable components. In concrete terms, they buy solid wood dining tables that last forever instead of veneer that can't be repaired. They also suggest removable fabric covers for the dining chairs, the sofas and armchairs that can be cleaned and replaced if necessary. Furthermore, they propose several fabrics made from recyclable plastic bottles. And to make life easier and to increase the lifetime of the furniture, they have in their catalogue easy water cleaned, virus protected and even pet friendly fabrics for the sofas, dining chairs, armchairs and rugs.

PISLER
FURNITURE
RENTAL

YOUR CONTACT AT PISLER
FURNITURE RENTAL GMBH
ERIC PISLER
MOBILE + 41 (0)78 746 59 86
ERICPISLER@EXPAT-
FURNITURE.CH

USEFUL LINK
EXPAT-FURNITURE.CH



Cost of Living

The cost of living in Switzerland is amongst the highest in the world. On average, people spend about one third of their income on rent and about 5% on insurance.

Average monthly expenditure of an individual in Switzerland. Amount in CHF

Fixed costs:

Housing	1,000.-
Health insurance	315.-
Household contents	
private liability insurance	30.-
Internet / Mobile / Serafe	145.-
Heating / Electricity / Water	198.-
Public transport	100.-

Food, household, personal expenses:

Food	500.-
Clothes, shoes, hairdresser, leisure time	400.-
Cleaning products, personal hygiene, waste disposal	40.-

Provisions:

Dentist, doctor, optician, medicines, gifts, repairs, small purchases	200.-
---	-------

Total	2,928.-
--------------	----------------

Utility Costs

Billed by the landlord as part of the rent:

Utilities or ancillary costs refer to the actual expenditure you incur for additional costs on top of rent and can include the following: heating, water, electricity (common areas), maintenance of common areas of house, caretaker costs, gardener, lift maintenance, sewerage costs and management fees. The costs for utilities are paid on a monthly basis, together with the rent and are either settled as the same amount every month or according to use. Akonto is the difference between what you have paid in advance and the actual costs. This amount will then be refunded to you or you will be billed, if the costs are higher. Utility costs represent an average of 10% of your monthly rent.

Billed separately by the respective providers:

Electricity

Personal electricity is billed directly by the electricity company and is to be paid in addition to the utility costs unless specified differently in your rental agreement.

Telephone, Internet, TV and radio licence fee

Those are separate costs in addition to the rent.

TV / Radio Serafe

This is a radio and TV license fee for each household. All households in Switzerland must pay the fee. Each household will automatically receive an invoice from Serafe, if they have registered in the local community.



Serafe TV & Radio fee in CHF incl. VAT

	Yearly
Private household (private)	335.-
Collective household (business)	670.-

TV / Internet and landline package

Before moving into your new apartment/house you need to ask your real estate agency or landlord what connection with which providers are possible and recommended for the particular building and area. It is recommended you compare several offerings and prices.

Welcome to Swisscom: Innovator of Trust

As soon as you arrive in Switzerland, you'll find that there's no shortage of postcards to choose from. Snow-capped mountains are followed by picturesque valleys and magnificent lakeside towns.

Welcome to the Alps

To connect this rugged country to state-of-the-art technologies, Swisscom invests heavily in modern networks and makes it a point of honor to provide the best possible service to its inhabitants, allowing optimal connection comfort over 99.9% of the territory and access to the latest innovations, while guaranteeing maximum security and protection for your data. Swisscom stays close to their customers and support them whenever they need it, their hotline is available 24/7, and their online channels are also highly developed.



SOURCE
EXPATICA.COM/CH
> SEARCH:
COST OF LIVING



USEFUL LINKS

SWISSCOM.CH

PROVIDER COMPARISON
COMPARIS.CH

TV/RADIO FEES
SERAFE.CH

Cost of Living



Aware of our country's specific administrative requirements, Swisscom has set up a special service for expatriates. So, when you settle in, you'll benefit from personalized assistance from one of their experts with extensive experience in the field. They offer you a smooth arrival, with simplified procedures and a dedicated contact who will advise you as closely as possible on your needs. He or she can work directly with you or in collaboration with your relocation agency.

At Swisscom, they offer a complete range of products and services. You'll find all the basics, including high-speed home connections and mobile connections on the 5G network. In addition, they offer an extremely popular and modern digital TV solution, with the ability to connect directly to your various streaming services.

Among the most popular are their antivirus, live sports channels, multiple SIM cards and roaming packages for comfortable travel. They do all this while remaining conscious of their impact on the environment.

They are working hard to achieve carbon neutrality. Through offsetting measures, clean energy production and the use of renewable energies. Thanks to innovative cooling systems for their central offices, they're getting there. In fact, World Finance named them the world's most sustainable company in 2022, a year in which we saved 1,590,772 tons of CO₂.

As a market leader, pioneer and innovator, they're always looking for ways to strengthen their brand. Brand Finance's global report ranked them third among the world's strongest brands.

With over 10 years' experience in the relocation business and thousands of expats they've already helped settle in, they're confident they can offer you a quality experience from the moment you arrive until you leave, where they will also take care of any cancellation fees. So when you move in, everything will already be up and running! What's more, to activate a mobile subscription, all they need is a copy of your passport or those of your family members. Plus, they will make sure you benefit from the best current promotions.

Welcome to Switzerland, welcome to your new home.

Contact them directly:
Service.expats@swisscom.com



Waste Disposal and Recycling System

Chargeable Rubbish Bags

Switzerland has one of the highest rates of waste recycling in the world. Recycling is mandatory, and failure to do so can result in fines, which could go up to CHF 300. Waste is only collected in bags that have a payment sticker attached. You have to pay for the official bags required by the government for waste disposal. These special trash bags can be bought either in supermarkets, post offices or other grocery stores. The bags come in different sizes (17, 35, 60, 110 litres) – try out what suits you best – the normal size is 35 litres. They are rather expensive (approx. CHF 25 for 10 x 35l bags), which caused people to frequently steal them. For this reason, you may not find them on special shelves and, usually, you have to ask for them at the check out. The aim is to make you think about what you're throwing away, so fill them carefully and maximise their potential! Recycling can be done either through a door-to-door collection or recycling centres such as collection spots near you which can be checked using the Recycling-map.

Recycling Centres

There are several recycling centres around the canton Zürich where you can bring your recycling, which must be separated into paper, cardboard, plastic, glass, tins, aluminium, batteries, light bulbs, books, metal, old clothes and PET bottles to name a few. Visit the website of your municipality to find out where the nearest recycling station is located and its opening hours. The rule is that when something breaks, don't throw it away, take it to the recycling point first.



The Brockenhaus will also take items which you no longer require, provided that these items are in good working order and condition and can be re-sold. See under [zuercher-brockenhaus.ch](https://www.zuercher-brockenhaus.ch)

Recycling- and Waste Disposal Plan

The waste disposal poster is called "Abfallplan" and can be obtained at your local Council House or "Gemeinde", it shows all of the various timetables for rubbish collection and the various recycling options. Most areas have regular door-to-door collections of paper and cardboard. These should be stacked neatly into 20cm bundles, tied with string like a parcel.

Electrical appliances

Defective televisions, computers, radios, refrigerators, etc. should if possible be returned to the original supplier or taken to a shop selling new appliances. Retailers are obliged to take these appliances back free of charge. Alternatively, they may be brought to the waste collection centre.

Green / Compost Recycling

You can save all of your edible peelings in the green or compost kitchen bin provided. Usually the bin is kept under your kitchen sink – it shouldn't smell especially if you empty it regularly and always wash it out after use. You can buy biodegradable bags to line the bin in any grocery store, if you find that more hygienic. The bin is usually emptied once a week, along with any other compost garden bins you may have.



CHARGEABLE WASTE BAG
"ZÜRI-SACK"



KNOW HOW
ZEITUNGSBINDER.CH



RECYCLING RULES



WASTE CALENDAR



Schooling and Education



Public school vs. international school

When coming to Switzerland with school-aged children, you may be faced with a dilemma: Swiss public school or an international school? All of Switzerland's schools, both public and international, have a very good reputation. Education is one of Switzerland's major strengths and is the country's main asset to uphold its position in the top flight of the scientific and economic world.

There is an excellent variety of public, semi-private, private and international schools in Switzerland.

Choosing the right school for your children requires you to be well informed, organised and open-minded. There are many important factors which require your consideration in order to make the right decision;

- Age of your child
- Your child's personality
- Prior school experience
- Languages spoken
- How long you are planning to stay in Switzerland
- Where you are going next – are entrance exams required?
- Where do you believe/want your child's future be based?
- Do you have private school tuition support?

Public School System

The public schools are highly respected. 95% of Swiss parents, regardless of income or education, choose to send their children to a local school. Class sizes are small (between 20 to 25 children).

The state gymnasiums offer a rigorous programme, resulting at age 18 in a Matura or in some cases an IB (International Baccalaureate).

At first glance using the local system can seem daunting to foreigners. However, the Schwyz region welcomes international families. All newcomers to the region's schools receive free German support (DAZ = Deutsch als Zweitsprache / German as a second language) either in a special integration class or a regular class.

Schools are assigned by the authorities on the basis of the home address. If a nearby school is full or cannot offer a German integration programme, children may have to travel further.

The system is very child-centred and young children up to the end of primary (age 12) attend school every morning and one to three afternoons a week. Wednesday afternoon is left free for the children to pursue their interests e.g. a sports team, playing a musical instrument. However, for working parents many schools now offer a "Tagesstruktur" (after-school programme) and "Mittagstisch" (lunch time supervision). These programmes are reasonably priced but often oversubscribed. Their alternatives are a "Tagesmutter" (nanny) or a "Kinderkrippe" (day-care).

Switzerland has no federal education authority or national curriculum. This can make moving between different cantons with children a frustrating experience, not only with regard to the language of instruction.

Zurich International School

Zürich International School (ZIS) is a leading non-profit day school for local and expat children aged 3-18, serving the cantons of Zürich, Zug and Schwyz. Instruction is in English and there is an additional bilingual English/German pathway for children aged 3-9.

ZIS provides an education that ensures children develop a lifelong love of learning. Whether it's encouraging them to challenge themselves, to connect with people from different backgrounds, or to push themselves to take risks and trust in their abilities, the school believes it is about striking the perfect balance – and seeing the person, as well as the learner.

The school has built its outstanding education on a foundation of exceptional teaching, a broad curriculum including the International Baccalaureate Diploma and Advanced Placement courses with a strong focus on science, technology, engineering and maths. It's an approach that has opened doors to the world's most prestigious universities.

But ZIS is most proud of how it delivers education. When it challenges students, it does so by getting them to experiment and explore, not by extinguishing their spark. The teachers work hard to connect each student to a subject and find the angle that brings it to life. That's an approach which helps learning stick.

ZIS has nurtured a campus environment that allows students to feel safe and supported, focusing on their well-being and helping them learn approaches

to deal with life's challenges. Its education focuses on character as well as achievement, and prizes qualities such as empathy, leadership, teamwork, resilience, patience and passion.



The school also takes the time to help students discover their true passions. Its extensive in-and-out-of-school activities expose students to a broad range of pursuits, so they can discover a hobby or career that may enrich their whole life.

[LINK](#)
ZIS.CH

Zurich International School

Lower School in Wädenswil and Main office

for students aged 3 to 11 and

Zurich International School

Secondary Campus in Adliswil

for students aged 11 to 18.

Admissions Office

Zurich International School

Phone: +41 58 750 2531

admissions@zis.ch zis.ch



Schooling and Education

Depending on the canton, the main language spoken in the classroom is German (as it is in Canton Zürich), French or Italian. Traditionally, the second language would be one of the remaining two official languages of Switzerland. In recent years, however, there has been a trend towards teaching English as the first foreign language at school.

Public schools include 2 years of kindergarten, 6 years of primary and 3 years of secondary school followed by the highly respected apprenticeship system or 4 years gymnasium (6 years if already started after primary school). Gymnasium students leaving with the Matura have a high level in their languages and maths. The Matura is becoming an increasingly portable qualification, recognised as valuable by universities such as Oxford and Cambridge in Great Britain as well as MIT in the United States.

The school year in Switzerland runs from mid August until the beginning of July. Private international schools operate from the end of August to the end of June.

Child Care
Should you have little children and seek a child-care option, then there are a number of different day-care centres available. From English-speaking day centres to German or even bilingual establishments. We can provide more details on request.

Private Schools
While local schools offer an excellent level of education and one of the best routes to long-term integration, they are not for everyone.

We are fortunate in Canton Zürich to have a selection of private schooling solutions with excellent curricula. For mobile families who are only planning a short stay in Zürich, there are also options. In close proximity, private schools in Canton Zug and Pfäffikon offer even more options.

Reachable private Schools in Canton Zürich

ZIS – Zürich International School

🌐 zis.ch
English

SIS International School

🌐 swissinternationalschool.ch
bilingual

D’Insle Montessori-Schule

🌐 dinsle.ch
bilingual

Lakeside School

🌐 lakesideschool.ch
bilingual

Freies Gymnasium Zürich

🌐 fgz.ch
bilingual

Double Decker

🌐 doubledecker.ch
bilingual



Language Schools Zürich

If you would like to learn some German, improve your English or learn any other new languages whilst in Switzerland, here is a list of possible language schools. Check out their websites and then choose one that fits your needs.

... and Canton Zug

International School of Zug and Luzern – ISZL

🌐 iszl.ch
English

Education-Stepping Stones

🌐 steppingstones.ch
English

Institut Montana Zugerberg

🌐 montana-zug.ch
bilingual

SIS International School, Rotkreuz-Zug

🌐 swissinternationalschool.ch
bilingual

Four-Forest Bilingual International School

🌐 four-forestschool.ch
bilingual

Klubschule Migros Zürich

Limmatplatz, Altstetten, Oerlikon
🌐 klubschule.ch

Alpha Sprachstudio

Stadelhoferstrasse 10
8001 Zürich
🌐 alphasprachwelt.ch

Berlitz

Am Bellevue, Theaterstrasse 12
8001 Zürich
🌐 berlitz.ch

Bellingua

Zollstrasse 20
8005 Zürich
🌐 bellingua.ch

Hull’s School

Falkenstrasse 28a
8008 Zürich
🌐 hullschool.ch

Inlingua

Badenerstrasse 15
8004 Zürich
🌐 inlingua-zuerich.ch

Sprachschule Schneider

Renggerstrasse 3
8038 Zürich
🌐 sprachschuleschneider.ch



Switzerland is well known for its thriving banking and financial sector. As a leader in banking services, you can be sure to get excellent banking service whilst living here in Switzerland. Above all, the banking system scores extremely well on security and efficiency. Bank clients are offered services tailored to meet their particular requirements, be it simply opening a bank account with credit and debit cards and e-banking or more sophisticated investment advice. The key to choosing a good bank is to match offerings and client relationship personnel to your own banking needs.

Opening a bank account First of all, you don't need to worry about the language barrier when applying to open a bank account in Switzerland: front-office employees in most major Swiss banks speak English and a few of them even have English versions of their brochures, such as UBS.

Therefore Prime Relocation and UBS are pleased to offer you a comprehensive package of services and financial solutions at preferential terms and conditions.

Opening an account in Switzerland, or anywhere in the world, for that matter, is subject to various regulations, so the first thing you need to know is that the application process can vary depending on your nationality and place of residence. But for your application, there are three things you will need regardless:

- An ID card or passport
- A valid Swiss residence and work permit (or a residence permit plus a Swiss employment contract)
- Yourself

The last point is as important as the first two, because you cannot open a bank account over the phone or send your partner or even your lawyer to

open one for you. Swiss laws require banks to verify a potential client's source of income and confirm his or her identity. At UBS, however, you also have the option of opening an account digitally via the UBS Banking App. You can download the "UBS & UBS key4" app for a digital experience. You will then be guided through the account opening process in just a few steps.

Debit cards (Debit Mastercard or Visa Debit)

Cheque books are not used in Switzerland. The most common card in Switzerland is the debit card linked to your bank account; simply type in your PIN code and authorise the transaction in any shop both in Switzerland and across the borders worldwide. However for foreign payments/transactions we recommend credit cards. For sums lower than CHF 80 you don't even need a PIN.

Credit cards (Mastercard or Visa)

Buy now – pay later. An application form usually requires details of the applicant's salary to receive a credit card with a given limit. With the contactless payment function, it is very convenient to use a credit card even for small amounts – sums lower than CHF 80 don't even need your PIN or signature. This card offers better exchange rates abroad or in foreign currency (especially with key4 card).

Paying bills

Pay your bills with payment slips or "Einzahlungsscheine". You can easily pay your bills in your digital banking on the computer or on the phone by simply scanning the QR-Code. Alternatively, you may prefer to pay regular monthly bills by standing order or direct debit. The new QR-bills can easily be paid, by UBS e- or mobilebanking.

Exclusively for UBS Relocation Clients

They speak your language and dedicate themselves to support you in every aspect of banking:

- Pay and Save – Everything you need for your daily banking
- Online Service – 24 / 7 access to your banking with the device of your choice
- Pension – Optimizing your taxes and saving for retirement
- Financing – Advising on and financing your dream-property
- Investments – Optimizing your assets and generating returns

UBS offers you a Banking Package that has everything you need for your daily banking business. The first six months they even offer the whole bundle of banking products for you free of charge. The Package includes a savings and personal account, a UBS Debit Card, UBS Credit Cards (in various currencies), UBS e-banking and the UBS Mobile Banking app. Whether it is asset, account or card information, payments, securities trading, notifications or changes of address, UBS e-banking and the UBS Mobile Banking App make all your banking transactions simple and convenient. UBS also offers you banking solutions for your children, which are free of charge.

For receiving the cost saving benefits for relocation customers, for scheduling an appointment and for further information about account opening and benefit services from UBS please contact the following shared UBS-mailbox:

relocation@ubs.com

Banking Hours

Typical banking hours are 9am to 12 noon and 2pm to 5pm although many banks in the centre of town stay open over lunchtime. Banks are closed on Saturdays and Sundays and bank holidays.

American Citizens

American and green card holding clients are required by the US Government to observe special regulations in all banking business while residing in Switzerland. Please ask your bank advisor to direct you to the proper member of the bank team authorised to work with such cases.

Currency

The currency is Swiss franc, CHF. The Swiss franc comes in the following denominations: Coins: 5, 10, 20, 50 (Rappen) and 1, 2, 5 francs. Notes: 10, 20, 50, 100, 200 and 1000 francs.

Choosing a Bank – Main Bank

UBS – is the market leader in retail and commercial banking in Switzerland.

YOUR CONTACT AT UBS

NAOMI CAFORIO
BAHNHOFSTRASSE 45
8001 ZÜRICH

CLAUDE GEBISTORF
BAHNHOFSTRASSE 45
8001 ZÜRICH

UBS.COM
RELOCATION@UBS.COM





[LINK](#)
HELVETIA.CH



Helvetia and **SWICA** explain which insurances are compulsory and which are optional but strongly recommended in their respective segments: general insurance and health/accident insurance. Switzerland is an expensive country; make sure you have the appropriate cover.

Compulsory insurance: Basic health, accident, motor vehicle and social security insurance.

Optional insurance, that everyone should have: Personal liability insurance

This is one of the most important types of insurances to have. It protects you and your family against major financial consequences if you cause damage to other people or their property. If you scratch the parquet floor of your rented apartment. If you collide with and injure another person while on your bicycle or skiing or if you spill wine on your friends' sofa or your children break the neighbour's window while playing football. The cover is worldwide.

Household contents insurance

Whether it be water damage, a fire in the home or a break-in – household contents insurance covers you

for the loss incurred. Worldwide cover also applies to stolen items outside your home, such as your mobile phone, bike or watch.

Accident insurance

All employees are covered by accident insurance which is provided by the employer by law. Should family members not be employed they must be covered separately through private insurance. This can be included as part of the health insurance.

Social insurance – the 3-pillar principle

The purpose of the Swiss pension system with its three pillars is to ensure financial security for people in Switzerland in their old age or in the event of disability. In addition, dependents are covered in the event of death. In Switzerland, provision for retirement is based on three pillars which complement each other:

1st pillar state provision: old age and survivors' insurance (OASI) – Swiss people usually refer to it by its German abbreviation AHV.

2nd pillar: occupational pension scheme organized by your employer (LOB), also referred to as "pension funds".

3rd pillar: voluntary private pension provision. In the third pillar, the investments are in your name and this provision is voluntary. It is used to cover gaps for old-age provision, risk protection or simply to optimize taxes.

Helvetia expat services

Specialized consultants with good English knowledge. Many years of experience within the expats segment. 24/7 support in case of claims Excellent customer rating.

Feel free to contact them: prime@helvetia.ch

Basic and Supplementary Healthcare Insurance: Mandatory Healthcare Insurance (KVG)

Swiss residents must have mandatory healthcare insurance (basic insurance) with a Swiss health insurer, unless they work for a foreign employer or receive a pension abroad. Their health insurance will cover them against the financial risks of illness, maternity and, depending on their work situation, also against accident.

Benefits

- Outpatient medical treatment
- Medicines in accordance with statutory lists of medicines if prescribed by a doctor (within the indication)
- Hospital treatment in the general ward in line with the base rate in the canton of residence or hospital treatment in the general ward of hospitals in the directories of the canton of residence
- Abroad: Emergency treatment at up to twice the rate of the canton of residence or as per bilateral agreements with EU and EFTA countries

Save on premiums

Alternative insurance models allow for strong advantages with respect to premiums. Here, SWICA offers you many attractive options. SWICA's insurance solutions and services offer you the best value for money at every stage in life.

Supplementary Insurance under the Insurance Contract Act (VVG)

With supplementary insurance you can extend your cover to suit your needs and receive attractive contributions towards health promotion and preventive healthcare.

Benefits

- Medication not covered by mandatory health insurance if prescribed by a doctor (within the indication)
- Complementary medical benefits
- Vaccinations, medical check-ups, health promotion
- Dental/orthodontic treatment
- Emergency treatment abroad including return transport to Switzerland
- Emergency transport
- Elective outpatient treatment worldwide
- Private room, two-bed room or multi-bed room worldwide
- Free choice of doctor/hospital worldwide

Convincing reasons that speaks for SWICA

- Outstanding customer satisfaction
- Worldwide customer service and telemedicine around the clock
- Personal support in the event of illness or accident

YOUR CONTACT AT SWICA
ERIC FÄSSLER
ERIC.FAESSLER@SWICA.CH
PHONE +41 55 220 18 00

FIND OUT MORE ABOUT THE ADVANTAGES WITH SWICA:
[SWICA.CH/ADVANTAGES](https://www.swica.ch/advantages)





JEANNINE TOBLER
IMMIGRATION MANAGER
JEANNINE.TOBLER@BDO.CH
+41 44 444 37 25



JANINE BIENZ
GLOBAL EMPLOYER SERVICES
TAX DIRECTOR
JANINE.BIENZ@BDO.CH
+41 44 444 36 37



MYRIAM MINNIG
LEAD COMPETENCE CENTER
SOSEC
MYRIAM.MINNIG@BDO.CH
+41 41 368 13 68



CHRISTA KALBERMATTEN
LEAD COMPETENCE CENTER
EMPLOYMENT LAW
CHRISTA.KALBERMATTEN@BDO.CH
+41 41 368 12 96



DANIELA KÄPPELI
LEAD PAYROLL SERVICES BSO
DANIELA.KAEPPELI@BDO.CH
+41 44 444 58 97

Legal, Tax and Compliance



Working in Switzerland – Know your compliance responsibilities.

Immigration

Depending on your situation, you may need to secure a work permit, demonstrate financial stability, or familiarize yourself with the different permit categories, and the requirements associated with each, to ensure a successful relocation. One of BDO's core competencies is the assistance in immigration topics. They can assist you with the granting or extension of your work permit. Their specialists are there to help and answer your questions.

Taxation

Switzerland's tax system is known for its favorable rates and financial stability. Learn about the different types of taxes (ordinary taxes, payroll taxes, capital gain taxes on the sale of a property, etc.), deductions and filing obligations based on your residency status and personal situation. The most important part in understanding the Swiss tax system is always to understand your tax residency position, as from there your tax filing obligations are determined. The BDO tax teams are happy to guide you through all such topics and take away the burden of doing the paperwork yourself.

Social Security

In Switzerland, we have an exceptionally complex social security system with different levels of coverage in the event of illness, accident and family obligations – as well as disability and old age in the long term.

Make yourself familiar with mandatory and voluntary options. We recommend that you understand the social security system, including pension plans and other benefits to secure well-being for you and your family. BDO is keen to give you an overview and advise you on solutions that are optimally tailored to your needs.

Employment Law

Being an employee of a Swiss based company or thinking about working for a foreign based employer while living and working in Switzerland could lead to various legal topics which should be considered. Swiss employment law includes a range of regulations and legal provisions that govern the relationship between employers and employees. These laws are designed to protect the rights and interests of both parties, ensuring fair treatment, safe working conditions and appropriate compensation. BDO's legal advisors would be pleased to assist in your knowledge and understanding.

Payroll

Managing payroll and understanding social benefits are crucial aspects of working in Switzerland. Payroll is not only the transferring of funds to a bank account on time, but also complying with salary structures and withholding tax deadlines along with social contributions. The payroll specialists of BDO will make sure that employers are compliant and can support using digital HR processes.

Medical



REGA
"SCHWEIZERISCHE
RETTUNGSFLUGWACHT"
ONE OF THE AIRBUS
HELICOPTERS



USEFUL LINKS
BALGRIST.CH
KLINIKBETHANIEN.CH
SCHULTHESS-KLINIK.CH

STADTSPITAL ZÜRICH



In general

No vaccinations are required to enter Switzerland. It is however important to bring any previous medical certificates or records with you from your home country. Swiss medical facilities are among the best in the world and of a very high standard. However, health care is expensive and it is recommended that you obtain adequate health insurance soon after arrival.

Doctors

Once here, you should set up a general practitioner (Hausarzt) to refer to in case of illness – it is simply a matter of going along and trying them out until you find one that suits you best. The general practitioner will then refer you to a specialist or hospital if needed. Generally, it is common to have a separate doctor for children, a paediatrician who is specialized in treating children and women usually need to locate a gynaecologist for an annual check-up.

Listing of all doctors and dentists in Switzerland:
🌐 doctor.ch

Pharmacies

Pharmacies in Switzerland are marked with the green pharmacy sign. In every neighbourhood you will find pharmacies. They are generally open from 8:00-18:30 (Monday to Friday) and 8:00-16:00/17:00 (Saturday). Swiss supermarkets do not sell any medications. For over-the-counter medications, such as painkillers and cough syrups, you need to go to a pharmacy.

Some pharmacies (often in train stations and airports) are open longer and on Sunday.

Hospitals

Universitätsspital Zürich

Rämistrasse 100, 8091 Zürich
Tel: +41 44 255 11 11
www.usz.ch

Klinik Hirslanden

Witellikerstrasse 40, 8032 Zürich
Tel: +41 44 387 21 11
Notfall: +41 44 387 35 35
www.hirslanden.ch

For children refer to a paediatrician of the:

Kinderspital (Children's Hospital)

Zürich – Eleonore Foundation
Steinwiesstrasse 75, 8032 Zürich
Tel: +41 44 266 71 11

Emergency Calls:

Police	117
Fire	118
Ambulance	144
Swiss Rescue	1414
European emergency number	112

Addresses and phone numbers can be looked simply online at 🌐 local.ch



Post Office



POST.CH



THE OLD SWISS POST STAMP "BASLERDYBLI" FROM 1845 IS WORTH ABOUT 100,000.-

HOW TO SEND MAIL



Switzerland has a very efficient postal system. Opening hours of your local post office vary according to branch, but generally they are closed from 12pm to 2pm for lunch and at 11am on Saturdays. Post offices in city centres are usually open during lunch time.

Post offices offer a diverse selection of things to buy including stationary, magazines, confectionery, mobile phones and gift cards for all kinds of shops and institutions.

Parcel Collection Notice

Should you receive a parcel and not be at home, the postman will put a yellow slip of paper in your letterbox and ask you to go and collect it from your post office (always take proof of identification with you). As a rule, the post will keep the parcel for a week and then return it to the sender if you do not pick it up in time.

Mail in Switzerland is sent by either A or B post. With A post, delivery is promised for the next day or B post within 2 – 3 working days.

Swisspost App

Write: TIMBRE and send SMS to 414. Receive one time code to write on your letter then post.

Postage for standard letters (CHF)

25 x 17.6 x 2cm and up to 20g is as follows:

	A	B
Switzerland	1.20	1.00
Europe	1.80	-
Overseas	2.30	-

Change of Address

When you move you have to inform the post office who will forward your mail to your new address within Switzerland. You may do so at the counter or online under post.ch.

Temporary Mail Stop

Should you be planning to go away for a short break, you can get your post forwarded to your holiday address or cancel the post for a week or two for holidays and get it sent to you in your letterbox on your return. Fill out a form at the post office or do it online. This saves the rather small letter boxes from overflowing.

Post Finance

You can open a "Postscheckkonto" at your local post office. This enables you to pay your bills as well as make cash withdrawals using the postfinance card. You may also make payments in many shops using this card – similar to an EC card from other banks.

postfinance.ch



Public Transport

Public transport in Switzerland is extremely efficient and runs very smoothly – everything is timed to perfection. Lots of places can be reached through a network of trains, buses, boats and cable cars. Buses play an important role too – the Swiss "Postbus" links smaller more remote villages with the nearest train station. Swiss railways, the SBB, have a great website and APP which will help you when you plan a journey www.sbb.ch – this gives you access to timetables of the trains, boats and buses which enables you to plan a journey from Zürich to Rome and shows all of the train changes necessary plus platform details. For Zürich Bus/Tram timetables try zvv.ch

Useful public transport apps

- SBB Mobile
- FAIRTIQ (Begin and end your journey in the app – that's it! No more tariff zone chaos)
- Moovit
- ZVV Fahrplan

Various Abonnements

Children under six years of age travel free. Purchase a junior card or "Juniorkarte" for 6 – 16 year olds who can then travel for free if accompanied by a parent – it costs approx. CHF 30 and lasts for a year. The third child receives his / her card free when you buy cards for the first two kids!

SwissPass

The SwissPass is more than just a Half-Fare travelcard or GA travelcard as it offers you access to partner services from Mobility Carsharing, PubliBike, SwissMobile and ski resorts. Thanks to the SwissPass you no longer have to think about



renewing your travelcard and so you automatically stay mobile. Your SwissPass Card is valid for several years and will be automatically renewed on the same card. SBB reminds you of the optional cancellation deadline in good time prior to the automatic travelcard renewal.

Half-Fare travelcard

It is advisable for adults to buy the Half-Fare travel card or "Halbtax" to get a reduced fee for train and bus travel and is also valid for certain mountain cable cars and trains. It costs CHF 185 (in the first year) and CHF 165 in the following years.

GA travelcard (General Abonnement)

A GA Travelcard covers all public transport in Switzerland. It costs for an adult in second class CHF 4,080 for one year. Various partner and family price reductions are offered.

One day GA Ticket

This can be reserved at your local Gemeinde for approx. CH 40 to travel a full day everywhere in Switzerland.

Further information

Dogs and cats travel free if you carry them in a basket, otherwise you must purchase a half price ticket for them. You can take your bike on the train but you have to buy a special ticket for it – ask at the counter. It is easy to travel with push chairs and

USEFUL LINKS

- [ZVV.CH](https://zvv.ch)
- [STADT-ZUERICH.CH/VBZ](https://stadt-zuerich.ch/vbz)
- [VZO.CH](https://vzo.ch)
- [SBB.CH](https://sbb.ch)
- [POSTAUTO.CH](https://postauto.ch)

SBB RAILWAY WAGON WITH CHILDREN'S PLAYGROUND

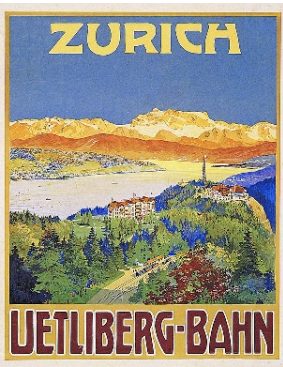


Public Transport

prams on the trains – especially with the S-Bahn because these trains meet the platform directly and you can just wheel your pram on. Choose the carriages with the pram sign and it is usually possible to lift the first set of seats and fit the buggy in.

If you use public transport every day, it is possible to buy a ticket for the whole of Canton Zürich called the “ZVV-NetzPass”. It covers all zones and allows you to have unlimited access to Zürich’s public transport network. Please ask at the counter in the train station or check at www.zvv.ch.

It is possible to buy a card for several journeys or “Mehrfahrtenkarte” should you always use the same number of zones or journey at a cheaper price than paying for the trip every time – ask at the counter and with this option you receive one journey for free.



VINTAGE POSTER OF THE UETLIBERG RAILWAY

Night fee

All connections after 1:00 am (Zürich–Zug–Lucerne) are subject to an additional night surcharge of CHF 5. This is based on the train

departure times from Zürich HB (main railway station) or Lucerne.



THE NEWEST TRAM IS CALLED “FLEXITY-TRAM”.

THE ZÜRICHSEE SCHIFFFAHRTSGESELLSCHAFT IS ALSO A PUBLIC TRANSPORT SYSTEM. ZSG.CH

SHIP STATION BESIDE “BÜRKLIPLATZ”



Driving

Under Swiss law you need to carry a few things with you in your car at all times:

- a red breakdown triangle and bright yellow vest
- your driver’s licence
- the vehicle’s registration papers
- the car’s exhaust test certificate
- insurance documents
- plus a European Accident Report to be filled out in case you have an accident, supplied by your insurance company.

If not regulated otherwise by traffic signs, priority to the right applies. Buses, trams, ambulance and police cars always have priority! If you have or cause an accident because you didn’t give way to cars coming from the right, you will be liable. Pedestrians always have the right of way at crossings.

When driving uphill, the car driving UP has priority, so if you meet a car and you cannot pass, the one descending the hill should back up. Do not use a mobile phone when driving. The Drink drive limit is 0.5mg / L blood-alcohol level = one glass of wine.

Driver’s licence

Your foreign driving licence is valid for one year. After that, you are required to have a Swiss licence. You need to exchange your foreign licence for a Swiss licence; this is still possible after the 12-month grace period, but you may have to pay a fine. The procedures vary depending on which country issued the foreign licence. In any case, you must produce the original driving licence and take an eye test. For more information about your specific situation, contact your canton’s driver and vehicle licensing office (Strassenverkehrsamt).



CAR SHARING MOBILITY.CH

Speed Limits

30/50km/h
60km/h

80km/h

120km/h

in town centres
in the outer suburbs
when outside towns
on motorways

Speeding cameras are prevalent throughout Switzerland. There are set fines for low over speeding, and percentage fines on your gross income on high over speeding.

Winter

It is highly recommended to use winter tyres to cope with the wintry conditions we enjoy in Switzerland. Aim to change your tyres from summer to winter around mid-October and back again to summer tyres around April. You will be liable if you have an accident in wintry conditions and you haven’t got the correct tyres. If you are driving to the mountains, it is advisable to carry snow chains in the vehicle, unless you have a four-wheel drive. Those can be rented or purchased. Chains are relatively inexpensive but are invaluable if you are caught in bad weather. Before the trip, read the instructions and do a trial run of putting them on. Keep a pair of gloves with the chains; hands get cold very quickly. You may want to join the TCS or “Touring Club Suisse” which is the Swiss rescue service for breakdowns. Membership isn’t expensive and it may well be worth it – see their website on tcs.ch.

ROAD TRAFFIC OFFICE ZÜRICH



Driving

Motorway tax

You will need a sticker to show that you have paid the motorway tax. It is called “Motorway vignette” and costs CHF 40. The sticker is valid for one calendar year. Buy your new one by the end of January each year. It is available at petrol stations, post offices, and at custom offices at the border. You can also get it online – (e-vignette) via [e-vignette.ch](https://www.e-vignette.ch).

Children under 12 years or below 150 cm must be seated in booster seats.

What to do if you have an accident

If you are involved in a minor accident where police assistance is not needed, note the registration numbers, names and addresses of all parties and witnesses. Complete the European Accident Report, have it signed and send it to the insurance company even if it was not your fault. It is advisable to report any minor accident to the police within 24 hrs to avoid any repercussions or problems with your insurance claim later on.

If you witness an accident you must stop by law, offer assistance and provide evidence. Call the police 117 and the ambulance 144 if needed.

Parking

Only park where you are allowed in clearly marked areas. Official parking places in Switzerland are all marked and in most cases chargeable. Do not renew your time in the same parking space, as you will risk getting a fine. Marked areas may be white, blue or yellow. White is free, yellow is private and blue is for parking with a parking disc. To park in

a blue area, set your parking disc to your arrival time and check how long you can stay – usually it is 1 hour for free.

Finding a used / new car?

As an expatriate, your requirements may differ from the ones of a regular car buyer in Switzerland. Autociel, they understand that completely. Instead of selling you a particular brand or model of car, they focus on understanding your requirements and finding you the car you need. So, whether or not you have a clear idea about your dream car, their experts offer friendly consultation on which car will serve you and your family the best. With a huge range of brands and models on offer, they get your dream car in a completely hassle-free manner.

Leasing a car

Leasing a car in Switzerland as an expat can be a complicated process. However, paying a hefty down payment and sky-high credit rates are not your only options. Autociel, they ensure that you get to lease a car at a reasonable price and contract terms. Thanks to their extensive experience of working with expats, they can offer you a hassle-free car leasing service if you have a valid work permit even with an L residency permit.

autociel.ch/expat/

Bicycles

Switzerland has great cycle paths and cycling is a great way of exercising with all the hills and mountains. Please note that children up to age of 14 have to wear helmets.

- Bikes need a bell and if you cycle in the dark a headlight and at least a rear reflector are required.
- Bikes may be rented at main railway stations or bike shops.



Komoot

The bike and hike tour planner for Switzerland. komoot.com



BICYCLES TO RENT
AT THE SBB STATION
[SBB.CH](https://sbb.ch)



GENEVA INTERNATIONAL
MOTOR SHOW AT PALEXPO.
GENEVAMOTORSHOW.COM



THE PARKING DISC YOU WILL
NEED A LOT IN ZÜRICH CITY,
FOR THE BLUE PARKING ZONE.



Festivities in and around Zürich

“SÄCHSILÜÜTE”
THE MOST TRADITIONAL
ZÜRICH FESTIVAL

ABOUT “SÄCHSILÜÜTE”



EUROPE'S BIGGEST
LATIN FESTIVAL
“CALIENTE!”

Public Holidays

Certain public holidays are celebrated throughout Switzerland – such as Easter, Christmas, New Year and Swiss National Day on 1 August . Other public holidays vary from canton to canton.

See more at
feiertagskalender.ch



Shopping



CUSTOMER CARDS
FROM THE TWO
LARGEST RETAILERS
COOP AND MIGROS.

FOREIGN ONLINE SHOPPING
BOFROST.CH
BRITSHOP.CH
MYEXPATSHOP.COM
DUTCHSTORE.CH
THE-BRITISH-SHOP.CH

Shopping in Switzerland is considered to be more expensive than in other European countries and restricted in choice. However, there is now a great variety of supermarkets (the largest being Migros and Coop and the smaller, cheaper ones are Lidl, Aldi, Denner) that offer fresh local produce. All of your other shopping requirements will be met quite easily in your high streets. Switzerland does not have a great culture of “mall” shopping which you may be used to from home, but there are a few larger shopping centres that are well worth a visit.

Supermarkets

Opening hours are more restricted here than in either the UK or US. Smaller supermarkets in villages close for the lunch period. On Saturdays most of the shops close at 5pm, some at 4pm, and in the smaller villages at 4pm. In Zürich city the shops stay open longer – until 7 or 8pm in the main shopping district. In Lucerne, the shops close at 6pm and at 4pm on Saturdays. Supermarkets are generally open from 8am till 7pm daily.

The two main supermarket chains are “Migros” and “Coop”. Migros mostly sell their own branded food and don’t sell alcohol or tobacco, which Coop does! Both stores offer loyalty cards – Migros has the “Cumulus Karte” and Coop the “Supercard” which are well worth having. With the Cumulus card you are awarded vouchers which you can then use as cash to pay in the shop and with the supercard from Coop you can shop at Coop City and pay with your points or choose something from their catalogue or even turn your points into air miles. Application forms are available from the customer services desks.

Online Shopping

Migros and Coop both offer an online shopping and home delivery service. See coop.ch and shop.migros.ch.

Should you run out of something out of shopping hours try:

- petrol stations – mostly open 7 days a week
- Railway station shops
- Zürich airport shops

Organic Food

Organic food in Switzerland is called “Bio”. There are specialised shops selling Bio as well as the farm shops. The “Reformhaus” is the major organic food store. The farm shops are also well worth a visit and found everywhere. Specialty foods can be bought in the gourmet shops like Globus, Jelmoli and Manor Food. There are also a number of ethnic shops available.

Clothes Shopping

Generally the shops in the high street are open from 9am till 8pm during the week. The biggest and finest department stores in Zürich are “Globus” and “Jelmoli”, where you will find a good selection of international brands. “Manor” is also a large department store. For clothes also try “PKZ” and “Esprit”.

Alcohol and tobacco

Alcohol is sold in supermarkets. The age limit for the purchase of wine and beer is 16 years, and 18 years for high-proof alcohol. There is no nationwide minimum age for the purchase of tobacco in Switzerland. Depending on the canton, the minimum age is either 16 or 18.



USEFULL LINKS
JUCKERFARM.CH
LIDL.CH
ALDI.CH
DENNER.CH



Shopping

Shopping Centres

There are bigger shopping centres around, which may just be a short train ride or car journey away. The largest shopping centres near Zürich city are:

- Sihltal Einkaufszentrum Sihlcity – this is a nice shopping centre which houses everything.
- Einkaufszentrum Glatt, Wallisellen – located on the motorway just past Zürich and close to the airport – shop here from 9am to 8pm.
🌐 glatt.ch
- Shoppi Tivoli Spreitenbach – there is a large variety of everything here.
🌐 shoppitivoli.ch
- Seedamm Centre, Rapperswil
🌐 seedamm-center.ch
- Volki-Land, Schwerzenbach
🌐 volkiland.ch
- Mall of Switzerland
🌐 mallofswitzerland.ch

Markets

There are a number of local markets that are well worth visiting if you enjoy fresh, local produce or organic food. There is a market in Zürich on Tuesdays and Fridays on the “Bürkliplatz”, close

to the lake (6am – 11am). Have a look at what’s on offer – everything from flowers to farmer’s products. On Saturdays, you can also find second-hand clothes and antiques. It’s worth a browse.

In addition there are farmers’ markets held in some villages around Zürich where you can buy local fresh products. In Rapperswil on Friday mornings on the Seequai, in Wädenswil on Saturday mornings and in Zürich main station on a Wednesday from 10am till 8pm – this is a large market with many stalls and is well worth a visit.

Furniture Shopping

There are an abundance of places to buy furniture. For regions around Zürich, Zug and Lucerne try: Tivoli Spreitenbach near Zürich is the most preferred spot for buying furniture. With “IKEA”, “Möbel Pfister” and “Micasa”.

The alternative in the direction of Lucerne is to drive to “Wohncenter Emmen”, just off the motorway to Lucerne which houses a “Möbel Pfister”, “livique” and a “Lumimart” for lights. There is also the DIY “Jumbo” – and this is all under one roof!

If you prefer not to drive so far, try “Möbel Gallati” or “Teo Jakob” in Zürich Tiefenbrunnen – both offer furniture of a very modern style. The “livique” in Dietlikon is good for the odd piece you may need – it’s cheap and cheerful and there is a big Coop DIY close by.

Furniture

Möbel Pfister,

Pfister Zürich-Walcheplatz
Walcheplatz, Neumühlequai 12
8001 Zürich
Tel: 044 267 25 25
🌐 pfister.ch

Micasa

Wädenswil Zürisee Centre
Rütistrasse 1
8820 Wädenswil
Tel: 044 783 09 10
🌐 micasa.ch

Ligne Roset

Dreikönigsstrasse 21
Zürich
🌐 ligneroset.ch

IKEA

Moorstrasse 3, 8305 Dietlikon
Tel: 0848 801 100
🌐 ikea.com

Livique

Hochbordstrasse 8
8600 Dübendorf
Tel: 044 802 86 86
🌐 livique.ch

Electrical Goods

Media Markt

Kalanderplatz 1
CH-8045 Zürich
Telefon +41 44 206 96 96
🌐 mediamarkt.ch

Fust

Shopville
8001 Zürich Hauptbahnhof
Tel: 044 225 77 30
🌐 fust.ch

Interdiscount

Löwenstrasse 52
Zürich
044 210 36 51
🌐 interdiscount.ch

DIY Stores

Jumbo (Coop)

🌐 jumbo.ch

DO IT + Garden (Migros)

🌐 doitgarden.ch

OBI

🌐 obi.ch

Hornbach

🌐 hornbach.ch

Lighting

Lumimart

Römerstrasse 234
8404 Winterthur
Tel: 052 244 29 40
🌐 lumimart.ch

Curtains

Wepro AG

Schaffhauserstrasse 239
8075 Zürich
Tel: 044 730 53 37
🌐 wepro.ch

SHOPPING CENTRE GLATT
“GLATTZENTRUM”



International Clubs and Societies

Ask your local council for a list of the clubs or Vereine in your town if you would like to get to know some people, either locals or expats. Many clubs of various interest groups can be found in larger cities close by, especially in Zürich. Here are a few of the main ones.

Zug International Women’s Club

🌐 ziwc.ch

Toastmasters Zug and Zürich

🌐 toastmasters.org

International Men’s Club of Zug

🌐 imcz.com

English Theatre Group of Zug

🌐 etgz.ch

English-Speaking Club of Zürich

🌐 escz.ch

Federation of Anglo-Swiss Clubs

🌐 angloswissclubs.ch

American Women’s Club of Zürich

🌐 awczurich.org

American Club Zürich

🌐 acz.ch

British Residents’ Association of Switzerland

🌐 britishresidents.ch

Zürich International Women’s Association

🌐 ziwa.com

Zürich Comedy Club

🌐 zcc.ch

Professional Women’s Group of Zürich

🌐 pwg-zh.com

International Women’s Club Lucerne

🌐 iwcl.net

Harvard Club of Switzerland

🌐 harvard-alumni.ch

Rugby Club

🌐 suisserugby.com

Rugby Club Lucerne

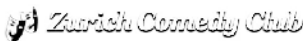
🌐 rcl.ch

Kiwi Club, New Zealand

🌐 nzclub.ch

Women’s Activity Club

🌐 wac.ch



Places of Interest

Introduction

Zürich offers a wide variety of leisure activities for beautiful sunny days as well as rainy days. There are also many options for winter activities, such as skiing, snowshoe walking and much more.

Uetliberg

This is Zürich's closest and favourite mountain. Take the train from Zürich main station to the Uetliberg and walk along the trails and hiking paths. There are a few good restaurants to get snacks or have a lovely lunch and the kids will love to run around in the woods and discover nature. If you live in Adliswil, take the cable car up to Felsenegg to the top of the Albis chain. 🌐 felsenegg.com

Mount Pilatus

Take the world's steepest cogwheel railway from Alpnachstad (near Lucerne) or the cable car from Krienseregg to the Pilatus Kulm (2132m). Enjoy the panoramic views, restaurant at the top. At Fräkmüntegg (1416m) there is a summer sledge run for the kids – longest in Europe – and a playground, as well as a picnic area. 🌐 pilatus.ch

Sattel Hochstuckli

Take the rotating cable car up to the top to “Mostelberg” and let the kids run around. There is a great children’s play area in summer – buy a ticket at the bottom – for the “Stuckli Jump” with bouncy castle and trampolines galore. Alternatively, take the panoramic hike to “Engelstock” and have a barbecue at one of the barbecue spots. In winter you can, of course, ski here. 🌐 sattel-hochstuckli.ch

Tierpark Goldau

A lovely animal park where you can feed the free-roaming Deer. It is possible to take a picnic or having a BBQ at one of the well-equipped barbeque areas. There is also a café and a nice playground for the kids. Kids always love it here and it is great at all times of the year. 🌐 tierpark.ch

Tierpark Langenberg, Langnau am Albis (ZH)

This is a zoo with no entrance charge. You don’t see a huge amount of animals, but it is still worth a visit and you can have a relaxing walk around the grounds and let the kids play in the wonderful playground. There are deer, bears and wolves to name a few. You can either take a picnic, grill sausages at an appointed barbeque spot or have lunch in the café. 🌐 wildnispark.ch

Mount Rigi

This is an absolute must – the views from Rigi are epic! Don’t go on a foggy day! Take the train from “Goldau” to “Rigi Kulm” (1800m) and you’ll be nearly at the summit. There is a hotel and restaurant up there and you can walk down to the next station to “Rigi Kaltbad” and then either take the same train back down to “Goldau” or take the cable car down to “Weggis” and then the boat to Lucerne (summer only). Book your ticket for this at the train station. Whatever you choose, you’ll have a great day. 🌐 rigi.ch



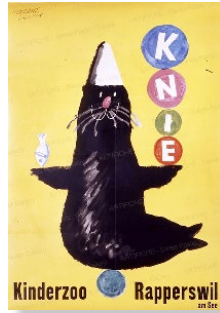
“PILATUSBAHN” THE STEEPEST COG TRAIN IN THE WORLD.

MOUNT RIGI RIGI KULM

Places of Interest

Rapperswil

This is actually one of our favourite little towns in Switzerland. If the weather is nice, take the boat from Zürich and return by train. If arriving by car, simply park in one of the car parks in town and stroll around the old town and harbour. Visit the castle on top of the hill and maybe have an ice-cream or lunch in one of the many quaint little cafés. Rapperswil has a very mediterranean atmosphere – it’s just like being in Italy! 🌐 rapperswil.ch



Knie’s children zoo, Rapperswil

Just 5 minutes away from town there is a great children’s zoo – it is run by the Knie family who are a famous circus family here in Switzerland. It’s not too big, so great for small kids – there are lots of animals to see – a fantastic seal show, horse rides, elephant rides and playgrounds all around, as well as a café for lunch. 🌐 knieskinderzoo.ch

Boat Cruise

Take a boat trip on Lake Zürich. The steam boat cruises from May to September are particularly fun and enjoyed by all ages. 🌐 zsg.ch

Zürich Zoo

Take tram number 5 or 6 straight up the Zürichberg to the zoo. A great family day out and don’t forget to visit the new Masoala Hall – a rain forest treat. There are wonderful playgrounds and a café for lunch. 🌐 zoo.ch

Glass Factory, Hergiswil

This is excellent fun if your kids are a bit older – not ideal for toddlers. There is a museum explaining the history of glass blowing in Switzerland – ask

for the English tape – and then you can visit the factory floor itself. 🌐 glasi.ch

Höllgrotten Caves, Baar

Here you will find some of the most amazing caves. You can walk through the caves on your own and admire the wonderful stalagmites and stalactites. There is a lower and a higher cave. Afterwards you can have a walk along the Lorze river or have a drink in the café nearby. Again, a great trip for the entire family. 🌐 hoellgrotten.ch

Lindt Home of Chocolate, Kilchberg

Discover the chocolate museum with audioguide. Experience the world of chocolate with all your senses: from its creation and cultural significance to unlimited chocolate tasting. Buy your ticket in advance. 🌐 lindt-home-of-chocolate.com



Landesmuseum, Zürich

Presents the most important stages in the history on the territory of present-day Switzerland. Animated projections and interactive research stations invite children and families on a fascinating journey into the past. Children and teenagers up to 16 years of age have free admission to the museum. 🌐 landesmuseum.ch

If you feel like a day out further afield, here are our suggestions:

Lake Klöntal, Canton Glarus

It is a breathtaking mountain lake – turquoise in colour – but rather cold! You can leave your car in the town of Glarus and take the post bus from the train station up to the Klöntal – every kid should experience a ride on a Swiss post bus because of its beeping horns (Dee Da Doh Postauto!). It is an enchanting place – nature at its very best. 🌐 kloental.com

Braunwald, Canton Glarus

This is a car-free mountain village. Take the cable train up to the village. You can ski here in the winter and in the summer you can go for many lovely hikes. 🌐 braunwald.ch

The Rheinfall, Schaffhausen

This is one of Switzerland’s magnificent sites – cascading waterfalls. You can even take a boat ride to beneath the waterfalls themselves. Schaffhausen town is well worth a visit, too. 🌐 schaffhausen.ch

Constance, Lake Constance

If you feel like a day out in Germany, then drive to Constance. It is a beautiful southern German town, just across the border and the lake is the largest in Europe. Don’t forget to take your passports with you. There is also a **Sealife Centre** in the town for the children, so a nice place to spend the day or treat yourselves to a weekend away. 🌐 konstanz.de

Mount Titlis, Engelberg

This is an all-year-round destination. You can even

ski here on the glacier in the summer. The trip to the summit takes about 40 mins – first you take a gondola, then change to a rotating cable-car to the summit at 3020m. The panoramic views are truly exhilarating. The town of Engelberg itself is also worth looking around. 🌐 titlis.ch

Swiss Miniatur, Melide Ticino

This is Switzerland’s largest open-air miniature museum. Located in Melide, on the shores of Lake Lugano, the park is surrounded by majestic mountains. 🌐 swissminiatur.ch

Europapark, Rust Germany

Germany’s largest theme park. 🌐 europapark.de

For Rainy days

Switzerland is very much an outdoors place. When the sun is shining there is an endless abundance of things to do and places to go, but as soon as it rains the possibilities of what to do diminish. Nevertheless, here are some suggestions.

Alpamare, Pfäffikon

This is a suitable destination for older kids. There are some gentle and some breathtakingly wild water slides, heated outdoor pools to relax in (for the adults) a wave pool and a wellness area. 🌐 alpamare.ch

Flieger Flab Museum, Dübendorf

This is a must for all aviation fans. Old aircrafts, engines and much more, also three flight simulators. 🌐 airforcecenter.ch

TITLIS “ROTAIR”
THE WORLD’S FIRST
AERIAL CABLEWAY
WITH ROTATING
CONDOLAS



WEATHER CHECK
METEOSCHWEIZ.ADMIN.CH

Places of Interest



THE FAMOUS OLD LOCOMOTIVE "KROKODIL" FOR THE GOTTHARD RAILWAY LINE AT THE MUSEUM OF TRANSPORT "VERKEHRSHAUS" IN LUCERNE.

Swiss Holiday Park, Morschach

This is a fantastic sports complex with a lovely swimming area. The swimming area has got indoor pools and a heated outdoor pool. There is a new baby play area just for the little ones and a slide for the more adventurous kids. You can play badminton, tennis, squash, billiards & snooker, table tennis, minigolf, do indoor climbing or bowling. [🌐 swissholidaypark.ch](http://www.swissholidaypark.ch)

IMAX Cinema, Verkehrshaus Lucerne

Go and watch a 3D film on a big screen. [🌐 imax.ch](http://www.imax.ch)

Cinema, Zürich

Go to the cinema for the afternoon and watch a nice film. [🌐 arena.ch](http://www.arena.ch) or [🌐 cineman.ch](http://www.cineman.ch)

Indoor Go-Kartbahn, Spreitenbach

This is a fun place for all ages from 6 to 80. Test your racing skills on the 350-meter-long track. [🌐 spreitenbach.kart.ch](http://www.spreitenbach.kart.ch)

Explorit, Volketswil

This is a large indoor play area for children from 15 months onwards. There are three floors with a range of activities on offer from craft workshops, a movie theatre, a playground and a mini track with cars and trains. [🌐 explorit.ch](http://www.explorit.ch)

Glacier Garden, Lucerne

This is a geoloigcal natural monument, museum and tourist attraction rolled into one. Learn about geology, glaciers, history and the ice age. Children love the mirror maze. [🌐 gletschergarten.ch](http://www.gletschergarten.ch)

Verkehrshaus, Lucerne

This is a favourite on a rainy day – go and have a look at the transport museum full of cars, planes, trains. There is a also a planetarium room and much more. [🌐 verkehrshaus.ch](http://www.verkehrshaus.ch)

Trapolino, Dietikon

An indoor play hall for kids from the age of two. Sheer kids' paradise! [🌐 trapolino.info](http://www.trapolino.info)

Park "Im Gruene" Rüschlikon

This is the perfect place to let the kids let off steam even if it is raining. In the summer there are donkey rides, a wonderful playground, a small train, a self-service restaurant and for small children there is a puppet show every Wednesday and Sunday at 3pm, and every day during the school holidays. [🌐 parkimgruene.ch](http://www.parkimgruene.ch)

Saurier Museum, Aaathal

With a giant whale fossil and huge dinosaur footprints, this museum is great fun for the children to get a feel for the Jurassic period. [🌐 sauriermuseum.ch](http://www.sauriermuseum.ch)

Technorama, Winterthur

This is a science museum for all ages. [🌐 technorama.ch](http://www.technorama.ch)

Schloss Lenzburg, Lenzburg

The large castle is especially interesting for children, as it offers many activities that let kids discover the world of a medieval castle. [🌐 schloss-lenzburg.ch](http://www.schloss-lenzburg.ch)

Skiing

There is no shortage of ski stations in Switzerland. Winter is one of the most beautiful times of the year, when the mountains come alive with skiers, snowboarders and sledgers. It can be very cold in the mountains so buy some proper thermal skiing underwear (e.g., ODLO) and feel the difference. It is important to be warm. Don't forget protection for your eyes too, always take your sunglasses or goggles for the kids with UV protection.

Ski equipment for children or adults can be rented for the whole season at most larger sports shops from October onwards. If you have a few children, it may well pay to buy the equipment and pass it down the line – this way you can get slightly better quality skis and boots.

If you are already a good skier and you want to buy some new skis – look for shops or possibilities to test run a pair of skis before you buy them – for example the shops at most larger ski stations offer this facility.

Where to buy skiing equipment:

Ochsner Sport, Bahnhofstrasse, Zürich. There is a large selection at very reasonable prices.

SportXX, Löwenstrasse 31–35, Zürich. Has a large selection of skiing equipment at very responsible prices.

Declathlon [🌐 decathlon.ch](http://www.decathlon.ch).

Here are a few of the **closest ski stations** for you to try – check out their websites for more detailed info:

Atzmännig SG

This is a small skiing area, perfect for small children. [🌐 atzmaennig.ch](http://www.atzmaennig.ch)

Bennau, Rothenturm SZ

Biberegg-Neusell is a ski area, close to Einsiedeln. [🌐 neusell.ch](http://www.neusell.ch)

Brunni-Haggenegg SZ

This ski area is based at the foot of the majestic Mythen mountains for the whole family. [🌐 brunni-alpthal.ch](http://www.brunni-alpthal.ch)

Sattel-Hochstuckli, Canton Schwyz

[🌐 sattel-hochstuckli.ch](http://www.sattel-hochstuckli.ch)

Stoos, Canton Schwyz

A family ski resort where you can either go for the day or take advantage of the morning only or afternoon only cards. [🌐 stoos.ch](http://www.stoos.ch)

Handgruebi, Canton SZ

Excellent for small kids – 2 or 3 lifts with a good selection of runs for an afternoon of fun. [🌐 handgruobi.ch](http://www.handgruobi.ch)

Engelberg, Canton LU

For the more advanced skier. [🌐 titlis.ch](http://www.titlis.ch)

Braunwald, Canton Glarus

A family skiing resort accessible by a cog train only. [🌐 braunwald.ch](http://www.braunwald.ch)



Places of Interest

CHECK OUT SKIRESORTS
SNOW STATUS, WEATHER

BERGFEX.CH/SCHWEIZ



Elm, Canton Glarus

A small family ski resort.

🌐 elm.ch

Flumserberg SG

An excellent selection of runs.

🌐 flumserberg.ch

Klosters, Canton Graubünden

The Parsenn skiing area is one of the largest in Switzerland.

🌐 klosters.ch

Flims/Laax GR

There is a glacier here, so you can ski all year round and a large variety of pistes for all abilities.

🌐 flimslaax.com

Pizol SG

A family skiing area.

🌐 pizol.ch

Melchseefrutt

A family ski resort – with a fun sledge run too!

🌐 melchseefrutt.ch

Andermatt, Canton Uri

With 180 kilometres of pistes and 33 lifts at up to 3,000 metres above sea level, Andermatt+Sedrun+Disentis is the largest ski area in Central Switzerland.

🌐 andermatt.ch

Wildhaus, Unterwasser, Alt St. Johann

Multiple winter sport activities on offer here – a great family skiing area and walking trails available.

🌐 skischule-wildhaus.ch

Adelboden Lenk

🌐 adelboden-lenk.ch

Arosa Lenzerheide

🌐 arosalenzerheide.swiss

Public Holidays

Public holidays in Switzerland are defined on a cantonal basis and therefore differ slightly from canton to canton. The more catholic cantons (such as Schwyz, Zug & Lucerne) get a few more holidays than protestant cantons (i.e. Zürich)! For information about regional holidays please refer to your HR department or your school's office.

USEFUL LINK
FEIERTAGSKALENDER.CH

January 1

January 6

March 19

March 30

April 2

April 16

May 1

May 10

May 21

August 1

August 15

September 16

December 8

December 25

December 26

New Year's Day

Three Kings Day

St. Joseph's Day

Good Friday

Easter Monday

Spring Festival (ZH only)

Labour Day

Ascension Day

Whit Monday

Swiss National Day

Assumption Day

Swiss Federal Fast

Immaculate Conception

Christmas Day

St Stephens Day

Neujahrstag

Dreikönigstag

St. Joseph Tag

Karfreitag

Ostermontag

Sechseläuten

Tag der Arbeit

Auffahrt

Pfingstmontag

Nationalfeiertag

Maria Himmelfahrt

Betttag

Maria Empfängnis

Weihnachten

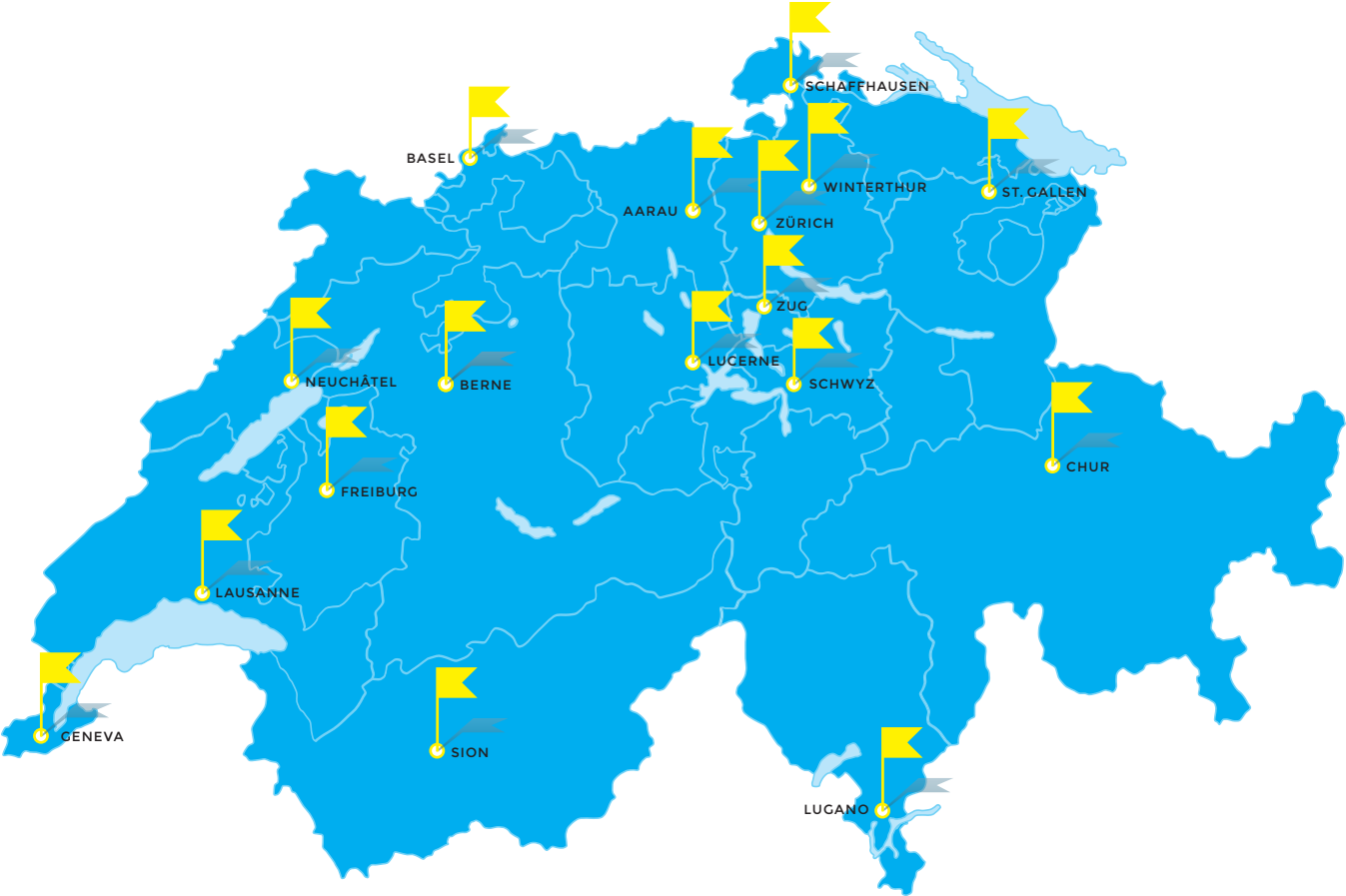
St. Stephan



DREIKÖNIGSKUCHEN
THREE KINGS DAY CAKE



Switzerland-wide Coverage by Prime Relocation



PUBLISHER PRIME RELOCATION GMBH
CONCEPT & DESIGN ANDRES GYSSLER
PRODUCER PRINTIMO AG

© PRIME RELOCATION 01 | 2024



FEELING AT HOME
IN ZÜRICH

Prime Relocation GmbH

Schipfe 11
CH-8001 Zürich
Switzerland

T +41 41 760 74 41
info@primerelocation.ch
www.primerelocation.ch



PROUD HOLDER OF THE
EURA QUALITY SEAL PLUS
SINCE 2016



FULL MEMBER OF EURA,
THE EUROPEAN RELOCATION
ASSOCIATION



PRIME RELOCATION IS A
PROUD MEMBER OF HARMONY
RELOCATION NETWORK