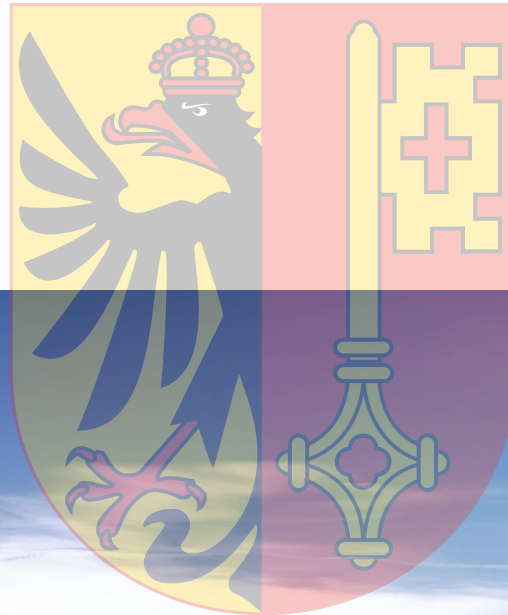


feeling at home

Welcome to Geneva and Lausanne. Settling-In Tips and Useful Information.



LIBERTÉ
ET
PATRIE



Table of Contents



FLAG OF
CANTON GENEVA



FLAG OF
CANTON VAUD

3	Switzerland and Lake Lemman Region
5	Geneva
9	Lausanne
12	Customs, Visas and Permits
14	International Moving
16	Importing
18	Accommodation
23	Furniture Rental Services
24	Waste Disposal and Recycling System
25	Legal, Tax and Compliance
26	Cost of Living
29	Schooling and Education
34	Banking
36	Insurances
38	Medical
40	Post Office
41	Public Transport
43	Driving
46	Shopping
49	International Clubs and Societies
50	Places of Interest
53	Public Holidays
54	Switzerland-wide Coverage by Prime Relocation

Switzerland and Lake Lemman Region

Switzerland consists of 26 cantons and is proud of its four official languages: French, spoken in the South, German spoken in the North, Italian in the South East and Romansch, which is only spoken in the South Eastern Canton of Graubünden.

colour and falling off the trees. The weather can be cloudy or foggy for a few days. In winter, it snows up in the mountains but rarely in the cities. Temperatures are usually around 5 degrees.



The Lake Lemman Region (Geneva and Lausanne) has been inhabited since the Neolithic Age. The area was colonised by the Romans who founded Avenches, the Helvetic capital. The region became part of the Holy Roman Empire of the German Nation in 1302. Under the rule of Berne, the Lake Lemman Area adopted the Reformation in 1536 and welcomed Protestant refugees, particularly the French Huguenots, who encouraged the development of the region. Following Napoleon I's conquest, the Lake Lemman area joined the Swiss Confederation in 1803.

LAKE LEMAN
AT THE HEIGHT OF
SAINT-SAPHORIN
CANTON VAUD

Climate and seasons

The seasons in Switzerland are very well defined. In spring (March to May) you can witness the trees blossoming and the meadows turning green. Expect cold days during spring time too. In summer, air temperatures reach between 25 to 35 and the water temperature of the lake between 19 to 23 degrees, which is perfect for swimming. There may be several heatwave periods and summers in Lausanne and Geneva can be surprisingly hot! From September to November, autumn sees the leaves changing

Many famous personalities come from the Lake Lemman Region: Henri Nestlé, the inventor of baby milk powder, François-Louis Cailler, the inventor of milk chocolate, Napoleon III, Ernest Hemingway, Coco Chanel, Charlie Chaplin, Audrey Hepburn, and Michael Schumacher.



PALAIS DE JUSTICE
LAUSANNE

Switzerland and Lake Lemman Region

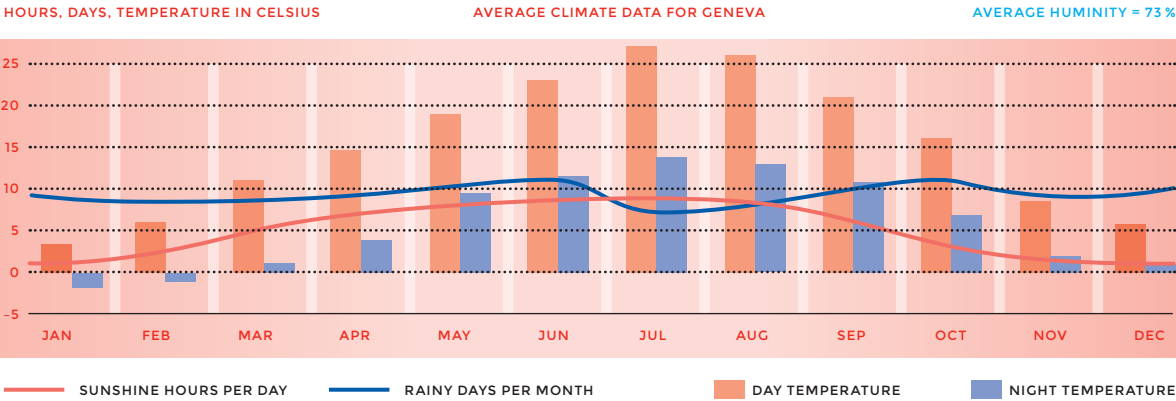
THE JET D'EAU.
INITIALLY A RELIEF VALVE FOR
A HYDROELECTRIC POWER
STATION, IT BECAME A
LANDMARK IN GENEVA.
PHOTO: MYSWITZERLAND.CH

Lake Lemman (180 km circumference) is the largest freshwater lake in western Europe and certainly the most romantic one, having inspired countless artists. Located in an exceptional and natural setting, it captivates the eyes. It is an immense stretch of water that changes colour with the passing of time. It is surrounded by the terraced

vineyards of La Côte and Lavaux on one and the Alps on the other side. It is the place for perfect summer appointments as well as sport competitions (famous international regattas, longest rowing contest of 160 km). Lake Lemman is also the habitat of around 30 species of fishes.



Geneva



USEFUL LINKS

[GENEVE.COM](https://www.geneve.com)
[MYSWITZERLAND.COM](https://www.myswitzerland.ch)

Welcome to Geneva

Geneva is an international and vibrant city, rich in culture and history. It is the home to thousands of expats (40% of the population is composed of foreigners) and the destination of hundreds of visitors annually. Geneva is famous for its international life, with the second UN world outpost, as well as numerous NGOs (around 200) such as, amongst other key organizations, the WHO-World Health Organization, WMO-World Meteorological Organization, WIPO-World Intellectual Property Organization. Geneva is one of the main cities

of world congress, it welcomes great exchanges thanks to its open-minded spirit and perception. Due to its geographical position, it has the privilege of being in the heart of Europe and close to cities such as London, Barcelona, Rome, Milan and Amsterdam.

The European Organization for Nuclear Research, CERN, is also located in the canton and is one of the world's largest and most respected Centres for scientific research. Geneva is also recognised for its dynamic export economy which is mainly driven by the banking, watch and services industries.

Population

Geneva has a population of around 204,000 and the whole Canton of Geneva just over 632,000 inhabitants.

SOME FACTS AND FIGURES ABOUT GENEVA

- SECOND LARGEST CITY IN SWITZERLAND AFTER ZURICH
- SECOND-LARGEST FINANCIAL CENTRE AFTER ZURICH
- ALTITUDE: 375 M ABOVE SEA LEVEL
- PERCENTAGE OF FOREIGNERS: 47.8 PERCENT (31 DEC., 2018)
- IN 2018, 18.6% OF THE POPULATION WERE MILLIONAIRES
- CITY OF GENEVA IS THE HOME TO INTERNATIONAL ORGANISATIONS: UN, CERN, ICRC, WHO, ILO, IOM, ISO, IEC, ITU, WIPO, WMO, WOSM AND WTO
- GENEVA HOSTS THE HIGHEST NUMBER OF INTERNATIONAL ORGANISATIONS IN THE WORLD
- 1863 THE INTERNATIONAL COMMITTEE OF THE RED CROSS WAS FOUNDED IN GENEVA
- GENEVA IS RANKED AMONG THE 10 MOST LIVEABLE CITIES IN THE WORLD

THE CATHEDRAL OF ST. PETER
IS A LANDMARK OF THE CITY
OF GENEVA. THE FRENCH
REFORMER JOHANNES CALVIN
GAVE HIS SERMONS HERE IN
THE 16TH CENTURY.



Geneva

Area Guide to Geneva

The left Bank

The left bank is largely a residential area with some upscale neighbourhoods, good accessibility to the city centre, along with parks, restaurants, cafés and all shopping amenities.

Residents consist largely of families, educated locals, and expats. Properties on the left bank are often more expensive, but usually slightly larger than the ones in the city centre. **Cologny and Vandoeuvres** are known as Geneva's Mini Beverly Hills!

Old Town – in the historical heart of Geneva, around Saint-Pierre's Cathedral, is the beautifully restored neighbourhood from 16th century.

Eaux Vives – young, very lively, multinational neighbourhood with restaurants, shops, parks, close to lake, buses and trams.

Geneva beach – several outdoor pools and supervised swimming in the Lake Lemman, open from mid-May to mid-September.

Parc des Eaux-Vives, Orangerie & Parc La Grange – beautiful view of the lake while enjoying French cuisine in the restaurant.

Jet d'Eau Fountain Geneva's famous landmark where 500 litres (132 gallons) of water per second are jetted to an altitude of 140 meters (459 feet).

Place Neuve, Bastions – the cultural heart of Geneva, opera, theatre, museums, university, shops and restaurants.

The right bank

Famous for its "Bains des Paquis" with free concerts at sunrise in summer time and year-round out-of-the-ordinary lunch or dinner. View over Mont Blanc.

Cointrin-Airport, Grand / Petit-Saconnex – United Nations, Red Cross and numerous international organisations' headquarters. Favoured by UN and international employees working on the right bank.

Paquis – close to the lake front and railway station Cornavin, very busy and animated multi-cultural, eclectic neighbourhood with shops, bars, red-light district, cinemas and restaurants, lower (in the upper part) to middle and upper range (closer to the lake) flats.

The Brunswick Monument mausoleum built in 1879, to honour one of Geneva's biggest "bienfaiteurs", Charles II de Brunswick and the Cottage, a small bistro of a lovely setting, just behind it.

The Palais Wilson building next to the hotel President Wilson, was originally built 1873 as the hotel in honour of the co-founder of the League of Nations, US President Wilson. The hotel was later renovated for government purposes (Seat of League of Nations until these were transferred to Palais des Nations) and is now the seat of the UN offices for Human Rights.

Pont du Mont Blanc – Terminals for boat cruises and tourist train tours on both sides of Geneva's main bridge across the Rhône river.

Bergues – busy neighbourhood along the quay of Rhône River, shops, restaurants.

Pregny, Chambésy, Bellevue, Genthod, Collex residential, in large part subject to noise from aircraft, trains and roads.

Versoix – with 13,450 inhabitants the last municipality on the right bank, in the canton of Geneva before the canton of Vaud starts. The distance from downtown Geneva is about 10 km and while the train will take you into the Centre in about 12 minutes, it can take you around 30 minutes by car depending on traffic.

Countryside (right-left-south)

Meyrin, Vernier – suburban, largely industrialised, subject to noise from aircraft, lower to middle range flats and villas.

In the area: **CERN** – European Nuclear Research – operates the largest particle physics laboratory in the world.

Satigny, Russin, Dardagny (Mandement Area) – traditional picturesque villages in the wine-growing area, Satigny being the village with largest surface of vineyards in French-speaking Switzerland. Commute by regional local train – takes you into Geneva Central Station within 10-15 min.

Veyrier, Vessy, Pinchat, Troinex, Bardonnex – residential neighbourhood, family friendly.

Cartigny, Chouilly, Laconnex, Lully, Soral – small villages in remote countryside and vineyards.



BOUCHONS VAUDOIS
THE TRADITIONAL BISCUITS IN
THE SHAPE OF WINE CORKS.
EXCLUSIVELY PRODUCED
BY THE "SOCIÉTÉ VAUDOISE
ET ROMANDE DES PATRONS
PÂTISSIERS-CONFISEURS,
CHOCOLATIERS, GLACIERS".

GENEVA IS SEPARATED BY TWO BANKS RIGHT/LEFT AS PER THE FLOW OF THE RIVER (ON THE MAP THE LEFT BANK IS ON THE RIGHT FOR EXAMPLE).



MAP OF THE CANTON GENEVA

Geneva



ALINGHI YACHT FROM THE "SOCIÉTÉ NAUTIQUE DE GENÈVE" WON THE MOST PRESTIGIOUS SAILING RACE, AMERICA'S CUP, IN 2007.

Saconnex d'Arve, Onex, Bernex, Aire-la-Ville, Confignon – residential family neighbourhood with village character.

Petit-Lancy, Grand-Lancy, Plan-les Ouates – suburban, multiple headquarters and offices, trams and buses, mixed area of villas and flats.

Carouge is Geneva's "Greenwich village", friendly atmosphere with small old houses lining the streets. Lively neighbourhood with restaurants and shops centered around the old market. Trendy district rising in popularity especially amongst the youth.

Acacias – neighbourhood with multiple headquarters and offices, dealerships, trams, close to Carouge.

Le Salève – despite its reputation as "Geneva's mountain", the Salève is located entirely on French soil. To get a splendid view of Lake Lemman and Mont Blanc, you can take the cable car up to its peak. With its 1380 m altitude and well mapped walking routes, it is a great destination for hiking, climbing and paragliding in the summer and sledding and beginner skiing in the winter.



Lausanne

Welcome to Lausanne

Lausanne is a city on the northern shores of Lake Lemman, in the French speaking canton of Vaud. It offers its residents a high quality of life, and is recognized globally for its cultural, educational and research institutions. Lausanne is considered the Swiss "San Francisco". It is close to nature and you can easily reach the picturesque vineyards of the Lavaux area by public transport. The public transport system is very well-connected, you can use the subway (the only one in Switzerland!) to reach the lakeside. The city is very active and lively. Even if Lausanne is a relatively small city, you can compare it with bigger cities thanks to its incredibly dynamic cultural scene, theatres, museums, dance companies and internationally renowned festivals. Night-life is very popular with lots of bars and restaurants. The young and dynamic feeling is due to the presence of one of the world's most renowned polytechnical schools, the EPFL-Ecole Polytechnique Fédérale, as well as Lausanne University, both located next to each other on a beautiful, multi-acre countryside campus on the outskirts of the town.

Lausanne is also home of IMD, combining the best of academia and business. As one of the world leaders in executive education, IMD stands out as a pioneer in corporate leadership development, strategy and digital transformation. The International Olympic Committee headquarters as well as the Olympic Museum and the Federal Supreme Court (the

highest court in Switzerland) are all based in Lausanne.

Away from the lake, lies Lausanne's hilly old town with the St-Maire castle, built between 1397 and 1427, a 17th century town hall, and medieval streets, lined with shops. There is also a 12th-century Gothic cathedral with an ornate façade.

Population

Lausanne has a population of around 137,000 people (which makes it the 4th largest city after Zurich, Geneva and Basel).

SOME FACTS AND FIGURES ABOUT LAUSANNE

- LAUSANNE IS THE CAPITAL OF THE CANTON OF VAUD
- POPULATION: 139,111 (IN 2018)
- THE ROMANS BUILT A MILITARY CAMP, WHICH THEY CALLED LOUSANNA. BY 400 AD, IT WAS NAMED CIVITAS LAUSANNA.
- COMPANIES WITH INTERNATIONAL IMPORTANCE ARE: NESTLÉ, LOGITECH, PHILIP MORRIS INTERNATIONAL, KUDELSKI
- THE FIRST HIGHWAY IN SWITZERLAND WAS THE GENEVA-LAUSANNE LINE

USEFUL LINKS

LAUSANNE-TOURISME.CH
MYSWITZERLAND.COM



LAUSANNE CITYSCAPE
PHOTO: MYSWITZERLAND.CH

Lausanne

Ouchy is the main lakeside area of Lausanne. It offers lots of walks, plenty of cafés to enjoy and is undeniably a tourist attraction.

Vidy next to Ouchy is the place for outdoor sports (football fields, skatepark, beach volleyball, tennis courts, etc.). There is also a large swimming pool with access to the lake - “Piscine de Bellerive”, as well as several free beaches and green areas (perfect for a BBQ).

Lausanne City

Place Saint-Francois is the centre of the public transport network, where you can find various buses that go all over the city.

The Flon used to be an old industrial district but has been renovated and transformed into a trendy place for young people in Lausanne. Bars, restaurants, night clubs, shops and cinemas.

The East side of

Lausanne (considered as little “Beverly Hills”), you are more likely find residential areas, such as Pully, Lutry, Belmont etc. Small buildings no higher than 3 to 4 levels and individual houses.

The West side of

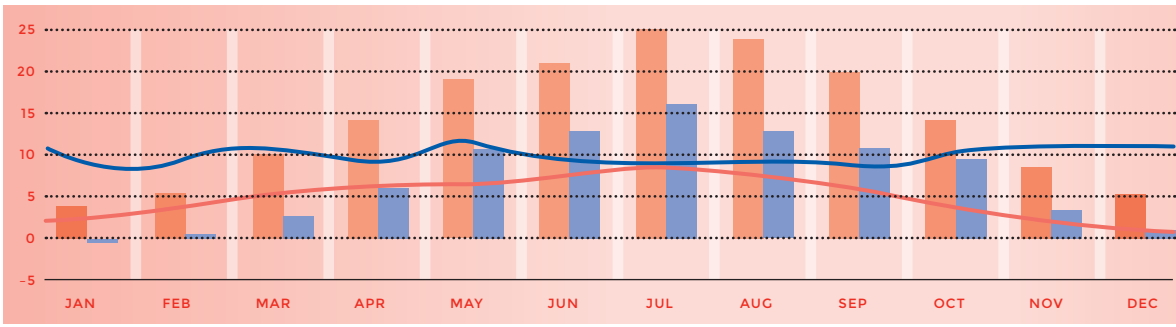
Lausanne is considered more “industrial” but still has lots of choices of residential property.

Prices may differ quite a lot between one side and the other.

LAUSANNE NEIGHBOURHOODS AND MUNICIPALITIES.



HOURS, DAYS, TEMPERATURE IN CELSIUS AVERAGE CLIMATE DATA FOR LAUSANNE AVERAGE HUMINITY = 72 %



SUNSHINE HOURS PER DAY RAINY DAYS PER MONTH DAY TEMPERATURE NIGHT TEMPERATURE

LAUSANNE DOWNTOWN WITH THE BRIDGE PONT BESSIERES AND THE IOC BUILDING.



TRANSPORT MAP OF LAUSANNE ONTHEWORLDMAP.COM



Customs, Visas and Permits

USEFUL LINKS SWITZERLAND

SWISS CUSTOMS
ZOLL.ADMIN.CH

FEDERAL DEPARTMENT OF
FOREIGN AFFAIRS FDFA
EDA.ADMIN.CH/EDA/EN/FDFA.
HTML

Customs, Visas and Permits

Here is some important information regarding Swiss customs. When importing goods from abroad, the duty-free limit is CHF 300 on the net value of your shopping. If it exceeds this amount then it is mandatory to pay the duty. It is forbidden to sum up the duty free amount together with other people. If you buy goods in euros and then bring your goods into Switzerland, you can get your foreign VAT refunded, make sure the sales person provides you with a form for a refund, which you can show at the border customs.

Visas and permit documents

To live and work in Switzerland, you require a residence permit, issued by the local cantonal authorities. For long-term assignments, it is advisable to bring important original documents with you, such as birth certificates, marriage certificates, insurance policies, medical prescriptions, employment information and entry permits. Since some permits have to be applied for from your home country, you should start this process well in advance of your move to Switzerland. For many, the Swiss immigration laws are complex and confusing. In 2002 a new bilateral agreement between Switzerland and the EU has considerably changed the laws on work and residence permits. This means that the immigration rules for the EU and EFTA States are now easier, whilst for non-EU citizens things have become more challenging.

EU and non-EU citizens' rights

As an EU citizen you have the right to settle in Switzerland and set up your own business, provided

that you do so assuming full responsibility and at your own risk. Spouses and children under 21 may also settle and work in Switzerland as may other direct relatives. Non-EU nationals can only get a Swiss work permit if their future employer proves there is no Swiss, EU or EFTA state national available to do the job. As a rule, qualified, indispensable management staff are permitted to enter the country.

Registration at the local district office

Registration needs to be completed within 14 days at the local district office as soon as you move into your house or apartment. The following documents are required when you do so:

- an employment contract
- a tenancy agreement for your new apartment
- valid identity documents or passport
- two passport photos
- civil status documents such as a family booklet and marriage certificate, birth certificates of children
- form to complete (individual for every municipality)

MUSÉE ARIANA, GENEVA



Driving licence

It is also advisable to arrange a Swiss driving licence as soon as possible, although you have a maximum of one year in which to do so. The following documents are required to change your driving licence:

- Application form (this can be downloaded from the website of the responsible Road Traffic Office)
- Original copy of a valid driving licence
- Residence permit (if your residence permit is in card format, your residence certificate is also required)
- A passport photo
- Certificate from an ophthalmologist
- For the driving licence classes C1, C, D, D1 or BPT and for class 3 you also require a medical certificate

The fee to change your driving licence is depending on your canton, the price range is between CHF 80 and CHF 140.

Geneva's City Hall

- Office Cantonal de la Population (only one place for all of the canton of Geneva state)
Route de Chancy 88, 1213 Onex
- Invitation for biometry requested
- On appointment only

Lausanne's City Hall (by appointment only)

Commune de Lausanne >> for newcomers
Rue du Port Franc 18, 1002 Lausanne
(be aware each district and town has its own city hall in Canton Vaud).

Biometry

- Voie du Chariot 3, 1014 Lausanne
- Invitation requested (usually transferee receives it once visa approved)
 - On appointment only

USEFUL LINKS GENEVA

CHANGE OF DRIVING LICENCE
GE.CH/ORGANISATION/OFFICE-
CANTONAL-VEHICULES-OCV

REQUEST DOCUMENTS
GE.CH

REQUEST BIOMETRY
GE.CH/ORGANISATION/OFFICE-
CANTONAL-POPULATION-
MIGRATIONS-OCPM BIOMETRY

USEFUL LINKS LAUSANNE &
CANTON OF VAUD

CHANGE OF DRIVING LICENCE
VD.CH/THEMES/MOBILITE/
AUTOMOBILE

REQUEST DOCUMENTS
LAUSANNE.CH

REQUEST BIOMETRY
FLON.CH

LAUSANNE DOWNTOWN
'PLACE DE L'EUROPE'



USEFUL LINKS
KEHRLIOELER.CH

Moving to and from Switzerland

The task of moving houses may appear to be an easy project on first sight, all you need to manage is packing your belongings and loading them on to a truck, and off you go. However, anybody who has managed a move on their own will have realised that there is a little more to it than that. Especially when you are planning an international move.

In Switzerland, you will find many domestic moving specialists who offer the transport of household goods, “one man and a truck” companies. In terms of pricing, you may be surprised at how the costs vary. However, if you are planning an international move, you will want to look out for a professional company with the necessary experience, knowledge and most of all a good partner network around the globe.

Separate the apples from the oranges

Anybody who is involved with an international move will soon realise that there is much more to consider than the actual transport of your household goods. The expertise in law enforcements and customs regulations is crucial, and well-established partnerships within a network of worldwide partners are key for a successful and stress-free international move. You will also want to be sure that the company you choose has experienced and trained staff. They know the difference between packing for a domestic move, and meticulous preparation for an international move. Browse homepages, read customer reviews on Google and keep an eye out for the FAIM Certification, the highest quality certification for international moving companies – you will soon realise who the professionals are.

Because moving is personal

Planning your move is all about making choices. Obtain quotations from international moving companies, and make sure that they offer you a professional survey at your residence on site or virtually by video – free of charge. Every move tells a different story, and every person will have a different household with valuable items and furniture – no matter if the value is in terms of cost, or sentimental reasons. Be sure to point out your favourites during the survey, and mention any items that you feel are worth the extra care and might require additional or tailored packaging. An experienced surveyor will also inform you about customs regulations in your destination country, and will point out any items that might be difficult or even restricted from importing.

Eyes open for hidden charges

Based on the survey, you should receive a quotation tailored to your needs. Be sure to check the quotation for the specialities discussed during the survey! Also, when you are comparing quotations, pay close attention to the “not included” services. There could be hidden costs... for example, the port charges at destination, or the premiums for transport insurance, which can vary substantially. The bottom-line price will give you an idea for the budget, but you will definitely want to include the insurance premium for an adequate comparison.

Do not underestimate your “gut feeling”.

The actual price for your move should not be the only decision criteria for the chosen company. Listen to your inner voice, and do not forget that the company you choose will be handling your

most private life. It is not just a move of goods; it is a move of emotions! You are leaving your current comfort zone to explore a new country, new home, new work place, and a new culture. You will have all kinds of emotions to deal with, and you will be more than happy to delegate the physical move. Someone who leaves you with a trustworthy impression – for your peace of mind!

Kehrli + Oeler AG – we move lives...

Their expertise is based on a long tradition that goes back to 1904! This history of experience, combined with constant innovation, is the secret of their success. Their network of worldwide partners is handpicked, personally known, and based on long-term relationships. With Kehrli + Oeler, you can rest assured that your household goods and belongings will be moved anywhere in the world, efficiently and with the utmost care!



OVER 100 YEARS OF EXPERIENCE
IN THE MOVING BUSINESS.
ABOUT 500,000 SUCCESSFUL
MOVINGS.
Ø 4.7 TO 5 STARS ON ALL RATING
WEBSITES.

Importing

Cars

In most cases, you can import your car into Switzerland tax-free as part of your household moving goods, if you have owned/used it for the last 6 months prior to your official entry date in Switzerland. Foreign licence plates may be used for up to one year after your arrival, provided that your foreign insurance remains valid. At the time of importation, present the completed application form (18.44 Household Effects) to the customs office at the border for importation. Once the car is imported, you need to register it at your canton's driver and vehicle licensing office (Strassenverkehrsamt).

Importing from a non-EU country

If you are considering importing your car from outside the EU, it's important to get all the information first. It can be costly and complicated, and your current vehicle may need adapting for Swiss road conditions.

Importing from an EU country

If you are bringing your car from a country within EU, you can simply drive the car across borders into Switzerland. However, official car import to Switzerland involves several steps and considerable paperwork.

In both cases **Autociel** is happy to assist you as follows:

Step 1

Once you get in touch with them, they provide a quote that includes the cost of importing and registering the car under Swiss license plates.

Step 2

Once you have submitted all your details, their experts investigate further and explore whether your car is eligible for tax free import.

Step 3

Autociel orders all required paperwork for the car.

Step 4

If the car is less than 6 months old, they arrange for a reduced CO₂ fee, that benefits you further.

Step 5

With all the paperwork in order, they organise the import process.

Step 6

They help you in getting an advantageous insurance quote from their partner insurances.

Step 7

Finally, they arrange the compulsory car testing by the government, get the car registered under Swiss license plates and deliver it to you, key in hand, ready to drive.

Things to keep in mind

Right Hand Drive (RHD)

If you are moving from the UK, chances are that your car is a Right-Hand Drive (RHD). Please note that it is difficult to drive a RHD car in Switzerland and quite often the expatriates do not get used to it. If this is the case, please note, there is almost no market for a RHD car here in Switzerland. In most instances, you need to return it to the UK, in order to sell it. This is not the easiest thing! Therefore, we do not recommend to import your RHD car to Switzerland.

Insurance cover

If you qualify to import your car tax-free as a household moving good (you must have owned the car for more than 6 months), you have 12 months to register your car under Swiss license plates, after

your arrival in Switzerland. However, be careful, often the insurance company in your homeland does not cover your car in Switzerland. So, it is important for you to check with your insurance company whether they offer any cover in Switzerland once you settle in and if yes, then for how long they do so. Note that 99% of non-EU insurance companies (US, Canadian...) will refuse to cover your car in Switzerland or even in the EU. This means, it is wise to register it as soon as you arrive here.

Non-EU cars

Satellite navigation

Often the SatNav fails to work properly or not at all in Switzerland. While it is possible to update it, this can be extremely complicated and costly.

Radio frequencies

If you are importing your car from outside of Europe, chances are only 50% all radio frequencies will work in Switzerland.

Servicing and repairing

As American cars are different from those in Europe, even those manufactured by European brands, there might be difficulties in servicing and repairing them in Switzerland, as well as in reselling them. We normally recommend selling them at 20% under the market price for comparable cars in Switzerland.

Contact Autociel

Since 2002, **Autociel** is the independent car expert in Switzerland. If you need help with your car or to lease one, you may contact them directly through

jerome.chessex@autociel.ch and have a look at their website **www.autociel.ch/expat/** for more information.

Pets

Travelling with pets requires a great deal of preparation. Vaccinations, licences or other documents may be needed. Special regulations apply to travel with dogs, cats and ferrets because these pets can be affected by rabies. It is compulsory for all dogs to be registered in the ANIS database and they must be microchipped. The Animal Identity Service (ANIS) operates throughout Switzerland and provides an independent database for pets. Within 10 days of your arrival in Switzerland, dogs must be taken to a veterinary doctor. The vet takes care of registration with the ANIS (including microchip or tattoo number) and conducts a medical check-up of your pet. You will get an international health certificate verifying that they have been vaccinated against rabies. As a dog owner, you are required to register your animal(s) in your Swiss place of residence. Your dog should to be insured under your liability insurance. Check with your private insurance provider to make sure pet insurance is part of the package.

If you plan to take your pet on trips: Dogs, cats and ferrets need at least a pet passport, a microchip and a valid rabies vaccination. The exact requirements are determined by the country to which you are travelling. The conditions for re-entry must be met if you wish to return to Switzerland. Some dog breeds are not accepted in Switzerland or certain cantons. Owners should contact vet authorities in their canton for more information.



THE MOST FAMOUS DOG IN SWITZERLAND "BARRY", ACCORDING TO A LEGEND, HE HELPED TO SAVE OVER 40 HUMAN LIVES.



Accommodation

Accommodation in Switzerland can be hard to find and expensive, especially when compared to other European countries. The cantons of Geneva, Zug and Zürich have the highest rental prices in Switzerland. The rental system here can appear complicated and it is advisable to have someone on your side to advise you of your rights and to represent you with the local landlord and agents.

Areas in and around Geneva

Properties in Geneva can often be smaller than many foreigners are accustomed to, and due to the competitive nature of the housing market, finding housing within the city can be a challenge. One should be aware that expectations might have to be adjusted since spacious properties with parking spaces and gardens are rarely obtainable in the city. For this reason, some might prefer to live in the countryside or villages with good access to the city.

When a rental property has been secured, a rental agreement will need to be signed which will lay out the conditions of the rental period. Usually, rental properties are available for a minimum length of

a year for a flat, and up to 3 years for a house. The rental agreement will define the conditions, the duration of the rental, the date of rental amount adjustment as well as the expectations regarding property maintenance. Three months' rent deposit is also requested before the entry inspection either on a blocked account with a Swiss bank or with an insurance caution (Firste Caution – Smart Caution – Swiss Caution).

Areas in and around Lausanne

The closer you are to the city centre or in trendy/ popular areas, the more expensive it will be. Public transport, shops and everything nearby is obviously a big plus in where you live. The east side of Lausanne such as Chailly, Pully, Lutry are also expensive due to the wonderful lake views.

A very popular and requested area in Lausanne is the district below the station. Close to the lake and downtown with Hausmannian style of buildings.

Linked to Lausanne are some suburbs like “Le Mont sur Lausanne”, “Romanel”, “Epalinges”, “Jouxtenz-mezery”, which are typically districts with houses and families.

Watch out in Geneva and Lausanne for false advertisements, this is quite common due to the high demand for apartments!

Fraud alert on property portals:

- Never transfer money blind
- Never give away your personal details or passwords
- If too good to be true, be extra cautious

- Viewings are important, hence if not possible, it might be suspicious
- Always check who the landlord or real estate agency is (if the person or agency is abroad please be careful)
- Use your common sense

Description of Housing – Property Size

Generally, the indicated size of the apartment or house does not include the kitchen, bathroom or dining rooms. Usually an open kitchen, dining room and living room counts as one and a half rooms. Below you will see an example of a 3.5 room apartment, which features two bedrooms and an

open plan living / dining / kitchen area, which illustrates a typical accommodation here.

What you can find

Houses are hard to find as they are in short supply; it is more common to find apartments with balconies and terraced apartments with larger terraces. When making an application you will rarely deal with the actual owner, more commonly a real estate agent will be coordinating the rental/ purchase.

Expats mostly decide to rent properties first and buy later. In fact, 75% of the Swiss live in rented accommodation and are not home owners.



Description of Housing – how to count the rooms

2 or 2.5 rooms

Geneva: 1 sitting-bedroom area (not separated) + 1 kitchen + 1 bathroom
Vaud: 1 sitting room + 1 separated bedroom + 1 kitchen + 1 bathroom

3 or 3.5 rooms

Geneva: 1 sitting area + 1 separated bedroom + 1 kitchen + 1 bathroom
Vaud: 1 sitting area + 2 bedrooms + 1 kitchen & often 2 bathrooms

4 or 4.5 rooms

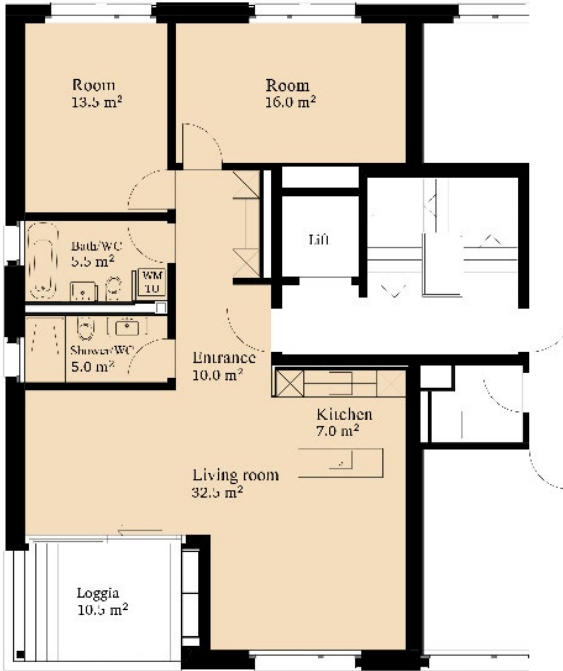
Geneva: 1 sitting area + 2 bedrooms + 1 kitchen + 1 bathroom
Vaud: 1 sitting area + 3 bedrooms + 1 kitchen + 2 bathrooms

5 or 5.5 rooms

Geneva: 1 sitting area + 3 bedrooms + 1 kitchen + 2 bathrooms
Vaud: 1 sitting area + 4 bedrooms + 1 kitchen + 2 bathrooms

6 or 6.5 rooms

Geneva: 1 sitting area + 4 bedrooms + 1 kitchen + 2 bathrooms
Vaud: none



LAUSANNE
OLD TOWN



Accommodation

Apartments are usually let unfurnished, but they do come with complete kitchens, including a dishwasher, oven and hob. Washing machines and tumble dryers may be available for either shared use or sometimes you may have your own. Furnished accommodation is more difficult to find and is expensive. Properties in Switzerland never come with curtains or light fittings, these usually need to be purchased by the tenant. They do, however, come fitted with shutters and/or blinds.

Electricity

The electric current in Switzerland is AC 220 - 240 volts, frequency 50 Hz. If you are coming from the United States, you will require a step-down transformer, which can be purchased at an electrical store, but it is advisable to leave your US appliances at home and buy new ones here for safety reasons. Most sockets are for two-pin plugs.

How to rent a property?

Making a good impression with the application form is essential if you want to be considered for your preferred apartment. When choosing an apartment, there will be competition from other applicants and you will need to be quick and flexible as to when you would like to begin the lease. Leases are usually open ended but with a one year minimum. A deposit of 3 months rent has to be paid into a security holding account before you can get the keys, as does the first months' rent, so please be prepared for this. The deposit amount will be refunded back to you along with any accrued interest at the end of the rental period. The costs for any damages in the apartment will be deducted.

General House Rules in Switzerland

Consideration

In order to establish good relations among all tenants, everybody is committed to mutual consideration. Every member of the household is to follow the house rules, which you will receive from the landlord /agency in writing.

Noise

Noise is to be avoided, especially at night. Playing musical instruments is not allowed before 8am and after 10pm. Noise should be kept to a minimum so as not to disturb others. Do not mow the lawn during lunch and dinner times as well as after 5pm on Saturdays and all day Sundays and public holidays. In some apartment blocks washing is not permitted on Sundays because of the noise created by the washing machines.

Cleanliness

Tenants are asked to keep the stairs, entrance and other common rooms free of obstacles and tidy. Unless a caretaker is in charge of the cleaning of common areas such as staircase, cellar aisles, the tenants should take care of it themselves. Each tenant should clean his/her part of the staircase (including windows). The clearing of snow is to be carried out by the tenants on a weekly basis. Tenants of garage or parking spaces are to clean the garage area and need to clear the snow to one side. Rubbish bags are to be properly tied and put in the bins provided. Bikes, mopeds, prams, children's bicycles, etc., need to be stored in the designated areas.

Common shared rooms

Unless arranged otherwise, laundry rooms and their appliances are to be used according to a schedule provided by the landlord. Each tenant is entitled to sole use of such rooms during the appointed times (Usually on weekdays between 7am and 10pm). After use, the rooms and appliances are to be cleaned. The laundry should be dried in the designated areas such as a laundry room, drying room or outside.

Heating

During the heating period (usually Oct - April), no heating in any room is to be turned off completely. The living room and other rooms are to be aired only briefly (10 minutes a day). Cellar and attic windows must be closed if temperatures fall to below freezing point. In apartments with floor heating only suitable carpets are to be installed, otherwise the landlord will not take responsibility for insufficient heating.

Miscellaneous

The main door of the apartment block is to remain locked after 8pm unless otherwise specified.

Security regulations displayed in the lifts are to be observed. Any operational disorders are to be reported immediately to the caretaker or landlord. The lift is to be handled with the necessary care.

Sun blinds and shutters are not to remain extended during wind and heavy rain. Their permanent extension during longer periods is not permitted. Please pull them in when you go out to avoid them becoming damaged.

When barbecuing on balconies or in gardens, tenants are to be considerate towards neighbours. In case of justifiable complaints, the landlord is entitled to prohibit any further barbecuing. For penthouses, the landlord may set up a separate regulation.

Shaking out and beating of carpets, containers, covers etc., from windows or balconies is to be avoided before 7am and after 8pm and during lunch times as well as on Sundays and public holidays.

Parking is only permitted in visitor's spaces for a limited period. Please park your car in its designated spot.

PONT DE LA MACHINE.
THE OLDEST BUILDING IN
GENEVA BUILT IN 1708 BETWEEN
THE 2 BANKS. HYDRAULIC
PUMP TO TAKE OUT THE WATER
FROM THE LAKE FOR THE CITY'S
FOUNTAINS IN THE OLD TIME.
NOW ONLY FOR TRENDY EVENTS.



Accommodation

Property prices

The following table provides you with an estimate of property rental prices in different areas of Geneva and Lausanne.

Price overview of unfurnished flats in Geneva city, suburbs and countryside.

Prices below don't include utilities or parking.

Bedrooms	Size	City	Suburbs / Countryside
Studio	30 – 50 m ²	CHF 1,350 +	CHF 1,100 +
1-bedroom apt	50 – 75 m ²	CHF 2,000 +	CHF 1,650 +
2-bedrooms apt	60 – 120 m ²	CHF 2,750 +	CHF 2,200 +
3-bedrooms apt	85 – 150 m ²	CHF 3,850 +	CHF 3,100 +
4-bedrooms apt	100 m ² +	CHF 4,600 +	CHF 3,750 +
Small House	100 – 120 m ²	n/a	CHF 4,400 +
Big House	140 – 220 m ²	n/a	CHF 7,700 +

* Studios are hardly available in the city.

Price overview of unfurnished flats in Lausanne city, suburbs and countryside.

Prices below don't include utilities or parking.

Bedrooms	Size	City	Suburbs / Countryside
Studio	30 – 50 m ²	CHF 1,100 +	CHF 900 +
1-bedroom apt	50 – 75 m ²	CHF 1,750 +	CHF 1,550 +
2-bedrooms apt	60 – 120 m ²	CHF 2,500 +	CHF 2,000 +
3-bedrooms apt	85 – 150 m ²	CHF 3,100 +	CHF 2,650 +
4-bedrooms apt	100 m ² +	CHF 4,400 +	CHF 3,500 +
Small House	100 – 120 m ²	n/a	CHF 4,500 +
Big House	140 – 220 m ²	n/a	CHF 7,750 +



BEAU-RIVAGE PALACE
THE HISTORICAL LUXURY FIVE-
STAR HOTEL IN LAUSANNE

Furniture Rental



Pisler Furniture Rental

For more than 20 years, Pisler Furniture Rental has been providing exceptional services to expatriates coming to Switzerland. The key to their success is the awareness of the importance of their clients' expectations.

Short term rental

You have decided to move your furniture to your new place in Switzerland and your container will arrive within the next few weeks. Pisler Furniture Rental furnishes and equips your new home with light and easy to maintain furniture. You select exactly what you need and they provide the furniture and household items requested in a few hours.

You don't waste money paying for a hotel stay or time looking for an expensive furnished accommodation.

Long term rental

You prefer leaving your furniture in your country and avoid the hassle of shipping your furniture back and forth. You find your new place and Pisler help you to tailor your home down to the smallest details. Pisler Furniture Rental has solid connections with European suppliers which allows them to provide your new home with bespoke home furnishings. You have the option to select materials, fabrics, colours, sizes and shapes of furniture to ideally match your new home. Furthermore, they provide made to measure curtains.

By working closely with their customers, they meet your personal preferences which they then align to your monthly budget and desires.

Sustainability

Pisler Furniture Rental is increasingly conscious of how the furniture they buy can impact the planet. Therefore, they select suppliers that can supply sustainable products; furniture made from recycled materials, responsibly sourced and with reusable components. In concrete terms, they buy solid wood dining tables that last forever instead of veneer that can't be repaired. They also suggest removable fabric covers for the dining chairs, the sofas and armchairs that can be cleaned and replaced if necessary. Furthermore, they propose several fabrics made from recyclable plastic bottles. And to make life easier and to increase the lifetime of the furniture, they have in their catalogue easy water cleaned, virus protected and even pet friendly fabrics for the sofas, dining chairs, armchairs and rugs.

YOUR CONTACT AT PISLER
FURNITURE RENTAL GMBH
ERIC PISLER
MOBILE + 41 (0)78 746 59 86
ERICPISLER@EXPAT-
FURNITURE.CH

USEFUL LINK
EXPAT-FURNITURE.CH





USEFUL LINKS GENEVA
RECYCLING CENTRE GENEVA:
GENEVE.CH/FR/THEMES/
ENVIRONNEMENT-URBAIN-
ESPACES-VERTS/RECYCLAGE-
DECHETS-MENAGERS

THERE ARE 3 **ECO POINTS**
IN THE CITY:
IN **BERNEX**
BERNEX.CH/NODE/3012
IN **CAROUGE**
CAROUGE.CH/ECOPPOINTS
IN **BELLEVUE**
MAIRIE-BELLEVUE.CH/DECHETS

USEFUL LINKS LAUSANNE
RECYCLING CENTRE LAUSANNE:
LAUSANNE.CH/VIE-PRATIQUE/
DECHETS-RECYCLAGE.HTML

THERE ARE SEVERAL **ECO**
POINTS IN THE CITY:
LAUSANNE.CH



CHARGEABLE RUBBISH BAGS

Waste Disposal and Recycling System

Chargeable rubbish bags

Switzerland has one of the highest rates of waste recycling in the world. Throwing away household waste costs here in Switzerland and you must use the official refuse bags to dispose of your household rubbish (as shown in the picture below). The purchase price of these bags includes a charge that covers the waste disposal costs. You can buy your official rubbish bags at the supermarket or Post Office – you may have to ask for them separately at the till. The rubbish bags come in different sizes (17, 35, 60, 110 litres) – try out what suits you best – the normal size is 35 litres. The aim is to make you think about what you're throwing away, so fill them carefully and maximise their potential! These bags are then put into the large communal containers near homes or collected on a designated day. One 35 litre bag costs CHF 2.–/per bag. So be sure to fill it completely before putting it out.

Special in Geneva

In Geneva you can easily buy the black standard waste bags in the supermarket. There are no taxes on trash bags yet in the Canton of Geneva; it is the last canton that does that. Everywhere else you have to buy the official refuse bags.

Recycling centres

The Swiss are keen recyclers! There are several recycling centres around Geneva and Lausanne where you can bring your recycling, which must be separated into paper, cardboard, plastic, glass, tins, aluminium, batteries, light bulbs, books, metal, old clothes and PET bottles to name a few. Visit the website



of your municipality to find out where the nearest recycling station is located and its opening hours. The rule is that when something breaks, don't throw it away, take it to the recycling point first.

Recycling- and waste disposal plan

The waste disposal plan is called "Plan de déchets" and can be obtained at your local Council House or City hall, it shows the various timetables for refuse collection and the various recycling options. Most areas have regular collections of paper and cardboard. These should be stacked neatly into 20cm bundles, tied with string like a parcel.

Electrical appliances

Defective televisions, computers, radios, refrigerators, etc. should, if possible, be returned to the original supplier or taken to a shop selling new appliances. Retailers are obliged to take these appliances back free of charge. Alternatively, they may be brought to the waste collection centre.

Green / Compost recycling

You can save all of your edible peelings in the green or compost kitchen bin provided. Usually the bin is kept under your kitchen sink – it shouldn't smell especially if you empty it regularly and always wash it out after use. You can buy biodegradable bags to line the bin from Migros or Coop if you find them more hygienic. The bin is usually emptied once a week, along with any other compost garden bins you may have.

Legal, Tax and Compliance

Working in Switzerland – Know your compliance responsibilities.

Immigration

Depending on your situation, you may need to secure a work permit, demonstrate financial stability, or familiarize yourself with the different permit categories, and the requirements associated with each, to ensure a successful relocation. One of BDO's core competencies is the assistance in immigration topics. They can assist you with the granting or extension of your work permit. Their specialists are there to help and answer your questions.

Taxation

Switzerland's tax system is known for its favorable rates and financial stability. Learn about the different types of taxes (ordinary taxes, payroll taxes, capital gain taxes on the sale of a property, etc.), deductions and filing obligations based on your residency status and personal situation. The most important part in understanding the Swiss tax system is always to understand your tax residency position, as from there your tax filing obligations are determined. The BDO tax teams are happy to guide you through all such topics and take away the burden of doing the paperwork yourself.

Social Security

In Switzerland, we have an exceptionally complex social security system with different levels of coverage in the event of illness, accident and family obligations – as well as disability and old age in the long term.

Make yourself familiar with mandatory and voluntary options. We recommend that you understand the social security system, including pension plans and other benefits to secure well-being for you and your family. BDO is keen to give you an overview and advise you on solutions that are optimally tailored to your needs.

Employment Law

Being an employee of a Swiss based company or thinking about working for a foreign based employer while living and working in Switzerland could lead to various legal topics which should be considered. Swiss employment law includes a range of regulations and legal provisions that govern the relationship between employers and employees. These laws are designed to protect the rights and interests of both parties, ensuring fair treatment, safe working conditions and appropriate compensation. BDO's legal advisors would be pleased to assist in your knowledge and understanding.

Payroll

Managing payroll and understanding social benefits are crucial aspects of working in Switzerland. Payroll is not only the transferring of funds to a bank account on time, but also complying with salary structures and withholding tax deadlines along with social contributions. The payroll specialists of BDO will make sure that employers are compliant and can support using digital HR processes.



ELIZABETH CONTI
HEAD IMMIGRATION
ELIZABETH.CONTI@BDO.CH
+41 44 444 58 60



JANINE BIENZ
GLOBAL EMPLOYER SERVICES
TAX DIRECTOR
JANINE.BIENZ@BDO.CH
+41 44 444 36 37



MYRIAM MINNIC
LEAD COMPETENCE CENTER
SOSEC
MYRIAM.MINNIC@BDO.CH
+41 41 368 13 68



CHRISTA KALBERMATTEN
LEAD COMPETENCE CENTER
EMPLOYMENT LAW
CHRISTA.KALBERMATTEN@
BDO.CH
+41 41 368 12 96



DANIELA KÄPPELI
LEAD PAYROLL SERVICES BSO
DANIELA.KAEPPELI@BDO.CH
+41 44 444 58 97

Cost of Living

The cost of living in Switzerland is amongst the highest in the world. On average, people spend about one third of their income on rent and about 5% on insurance.

Average monthly expenditure of an individual in Switzerland. Amount in CHF		
Fixed costs:	Housing	1,000.-
	Health insurance	315.-
	Household contents	
	private liability insurance	30.-
	Internet / Mobile / Serafe	145.-
	Heating / Electricity / Water	198.-
	Public transport	100.-
Food, household, personal expenses:	Food	500.-
	Clothes, shoes, hairdresser, leisure time	400.-
	Cleaning products, personal hygiene, waste disposal	40.-
	Provisions:	
	Dentist, doctor, optician, medicines, gifts, repairs, small purchases	200.-
Total		2,928.-

Utility Costs

Billed by the landlord as part of the rent:

Utilities or ancillary costs refer to the actual expenditure you incur for additional costs on top of rent and can include the following: heating, water, electricity (common areas), maintenance of common areas of house, caretaker costs, gardener, lift maintenance, sewerage costs and management fees. The costs for utilities are paid on a monthly basis, together with the rent and are either settled as the same amount every month or according to use. Akonto is the difference between what you have paid in advance and the actual costs. This amount will then be refunded to you or you will be billed, if the costs are higher. Utility costs represent an average of 10% of your monthly rent.

Billed separately by the respective providers:

Electricity

Personal electricity is billed directly by the electricity company and is to be paid in addition to the utility costs unless specified differently in your rental agreement.

Telephone, Internet, TV and radio licence fee

Those are separate costs in addition to the rent.

TV / Radio Serafe

This is a radio and TV license fee for each household. All households in Switzerland must pay the fee. Each household will automatically receive an invoice from Serafe, if they have registered in the local community.



Serafe TV & Radio fee in CHF incl. VAT	
	Yearly
Private household (private)	335.-
Collective household (business)	670.-

TV / Internet and landline package

Before moving into your new apartment/house you need to ask your real estate agency or landlord what connection with which providers are possible and recommended for the particular building and area. It is recommended you compare several offerings and prices.

Welcome to Swisscom: Innovator of Trust

As soon as you arrive in Switzerland, you'll find that there's no shortage of postcards to choose from. Snow-capped mountains are followed by picturesque valleys and magnificent lakeside towns.

Welcome to the Alps

To connect this rugged country to state-of-the-art technologies, Swisscom invests heavily in modern networks and makes it a point of honor to provide the best possible service to its inhabitants, allowing optimal connection comfort over 99.9% of the territory and access to the latest innovations, while guaranteeing maximum security and protection for your data. Swisscom stays close to their customers and support them whenever they need it, their hotline is available 24/7, and their online channels are also highly developed.



SOURCE
EXPATICA.COM/CH
> SEARCH:
COST OF LIVING



USEFUL LINKS

SWISSCOM.CH

PROVIDER COMPARISON
COMPARIS.CH

TV/RADIO FEES
SERAFE.CH

Cost of Living



Aware of our country's specific administrative requirements, Swisscom has set up a special service for expatriates. So, when you settle in, you'll benefit from personalized assistance from one of their experts with extensive experience in the field. They offer you a smooth arrival, with simplified procedures and a dedicated contact who will advise you as closely as possible on your needs. He or she can work directly with you or in collaboration with your relocation agency.

At Swisscom, they offer a complete range of products and services. You'll find all the basics, including high-speed home connections and mobile connections on the 5G network. In addition, they offer an extremely popular and modern digital TV solution, with the ability to connect directly to your various streaming services.

Among the most popular are their antivirus, live sports channels, multiple SIM cards and roaming packages for comfortable travel. They do all this while remaining conscious of their impact on the environment.

They are working hard to achieve carbon neutrality. Through offsetting measures, clean energy production and the use of renewable energies. Thanks to innovative cooling systems for their central offices, they're getting there. In fact, World Finance named them the world's most sustainable company in 2022, a year in which we saved 1,590,772 tons of CO₂.

As a market leader, pioneer and innovator, they're always looking for ways to strengthen their brand. Brand Finance's global report ranked them third among the world's strongest brands.

With over 10 years' experience in the relocation business and thousands of expats they've already helped settle in, they're confident they can offer you a quality experience from the moment you arrive until you leave, where they will also take care of any cancellation fees. So when you move in, everything will already be up and running! What's more, to activate a mobile subscription, all they need is a copy of your passport or those of your family members. Plus, they will make sure you benefit from the best current promotions.

Welcome to Switzerland, welcome to your new home.

Contact them directly:
Service.expats@swisscom.com



Schooling and Education

Public school vs. international school

When coming to Switzerland with school-aged children, you may be faced with a dilemma: Swiss public school or an international school? All of Switzerland's schools, both public and international, have a very good reputation. Education is one of Switzerland's major strengths and is the country's main asset to uphold its position in the top flight of the scientific and economic world. There is an excellent variety of public, semi-private, private and international schools in Switzerland. Choosing the right school for your children requires you to be well-informed, organised and open-minded. There are many important factors which require your consideration in order to make the right decision:

- Age of your child
- Your child's personality
- Prior school experience
- Languages spoken
- How long you are planning to stay in Switzerland
- Where you are going next - are entrance exams required?
- Where do you believe/want your child's future be based?
- Do you have private school tuition support?

The public school system in Switzerland

The public schools are highly respected. 95% of Swiss parents, regardless of income or education, choose to send their children to a local school. Class sizes are small (between 20 to 25 children). The state gymnasium (grammar / high schools) offer a rigorous programme, resulting at age 18 in a Matura. At first glance, using the local system can seem daunting to foreigners. However, the Lausanne and

Geneva region welcomes international families. All newcomers to the region's schools receive free French support either in a special integration or a regular class.

Schools are assigned by the authorities on the basis of the home address. If a nearby school is full or cannot offer a French integration programme, children may have to travel further.

The system is very child-centred and young children up to the end of primary (age 12) attend school every morning and one to three afternoons a week.

Wednesday afternoon is left free for the children to pursue their interests e.g. a sports team, playing a musical instrument. However, for working parents many schools now offer an afterschool programme and lunchtime supervision. These programmes are reasonably priced but often oversubscribed.

Switzerland has no federal education authority or national curriculum. This can make moving between different cantons with children a difficult experience in regards to both the language and curriculum.

Depending on the canton, the main language spoken in the classroom is French, German or Italian. Traditionally, the second language would be one of the remaining two official languages of Switzerland.



Schooling and Education



ECOLINT, INTERNATIONAL SCHOOL OF GENEVA.



In recent years, however, there has been a trend towards teaching English as the first foreign language at school.

Public schools include 2 years of kindergarten, 6 years of primary and 3 years of secondary school followed by the highly respected apprenticeship system or 4 years gymnasium (6 years if already started after primary school). Gymnasium students leaving with the Matura have a high level in their languages and maths. The Matura is becoming an increasingly portable qualification, recognised as valuable by universities such as Oxford and Cambridge in Great Britain as well as MIT in the United States. The public school as well as the private international school year runs from the end of August to the end of June.

Private schools
While local schools offer an excellent level of education and one of the best routes to long-term integration, they are not for everyone. We are fortunate in Lausanne and Geneva to have a selection of private schooling solutions with excellent curricula.

Education in Geneva
There are a vast number of schooling options in Geneva that expats can consider for their children, offering various levels and curriculums of education. International or private schools may be an option for expats staying for shorter periods, but the majority of children attend public schools.

Public schools in Geneva
Public schools in Switzerland are available for free to all children, including expats. These government-funded schools are available for children from the age of 4.

Children who do not yet speak French are often placed in a newcomer class, which focusses on learning the French language in order to continue their education in French.

Secondary schools in Switzerland are usually selected based on aspirations of the child, or aptitude tests, with schools focusing on different levels and routes of education, ranging from practical education to gearing towards university-level education. Classes are taught in French, however, national languages such as German or Italian and English are taught in secondary schools as well.

International and private schools in Geneva
Throughout Geneva, you can find several international and private schools, which can be a good option for those living in the city for a short period; however, they can be very costly. The majority of the international schools in the city teach the international baccalaureate curriculum and a few the British Cambridge programme. Many of these schools have limited capacity, so it is best to start the application process as early as possible.



Ecolint International School of Geneva
Language: bilingual
International Primary Curriculum and National program International Baccalaureate
3 campuses
Ages: 4 to 18
🌐 ecolint.ch

College du Leman
Language: bilingual
International Primary Curriculum and National programme International Baccalaureate
Ages: 3 to 18
🌐 nordangliaeducation.com/our-schools/switzerland/cdl

British School of Geneva
Language: English
English Curriculum
4 to 18
🌐 britishschoolgeneva.ch

Geneva English School
Language: English
English Curriculum
Ages: 4 to 18
🌐 geschool.ch

Institut de Lancy
Language: bilingual
Swiss and International curriculum
Ages: 3 to 18
🌐 iil.ch



Ecole Florimont
Language: French & bilingual
Swiss and International curriculum
Ages: 3 to 18
🌐 florimont.ch

Deutsche Schule
Language: German
German curriculum
Ages: 3 to 19
🌐 dsgenf.ch

Ecole Moser
Language: French
Swiss curriculum
Ages: 8 to 18
🌐 ecolemoser.ch

FOR AN OVERVIEW OF ALL THE INTERNATIONAL SCHOOLS

ACEP.CH
SWISS-SCHOOLS.CH



WORLD INTELLECTUAL PROPERTY ORGANIZATION IN GENEVA.

Schooling and Education

Public schools in Lausanne

Public schools in Lausanne are available for free to all children, including expats. These government-funded schools are available for children from their youngest age.



Children from 6 years old who do not yet speak French are often placed in a newcomer class, which focusses on learning the French language in order to continue their education in French. Children of 12 years or older are typically placed in an international bridging class where they will study in both English and French for an immersion year before being integrated with the school.

Secondary schools in Lausanne are usually selected based on aspirations of the child, or aptitude tests, with schools focusing on different levels and routes of education, ranging from practical education to gearing towards university level education. Generally, classes are taught in French, however some secondary schools teach a dual-language curriculum with some subjects taught in both French and English.

International and private schools in Lausanne

Throughout Lausanne, you can find a number of international and private schools, which can be a good option for those living in the city for a short period. The majority of the international schools in the city offer the International Baccalaureate programme. They have limited capacity, best to start the application process as early as possible.

Ecole Nouvelle de Suisse Romande

Bilingual school – IB & Swiss diploma
🌐 ensr.ch

Ecole Lemania

French curriculum & IB & Swiss diploma
🌐 lemania.ch

Collège Champittet

Bilingual school – Swiss diploma & IB
🌐 nordangliaeducation.com

Brillantmont Intl. Boarding & Day School

🌐 brillantmont.ch

International School of Lausanne

IB World School - IB, PYP, MYP and DP
🌐 isl.ch

Language schools in Geneva & Lausanne

If you would like to learn some French or German, improve your English or learn any other new languages whilst in Switzerland, here is a list of possible language schools. Check out their websites and then choose one that fits your needs.

Online Language school

🌐 lingoda.com

Ecole Club Migros

🌐 ecole-club.ch

Swiss French School

🌐 swissfrenchschool.ch

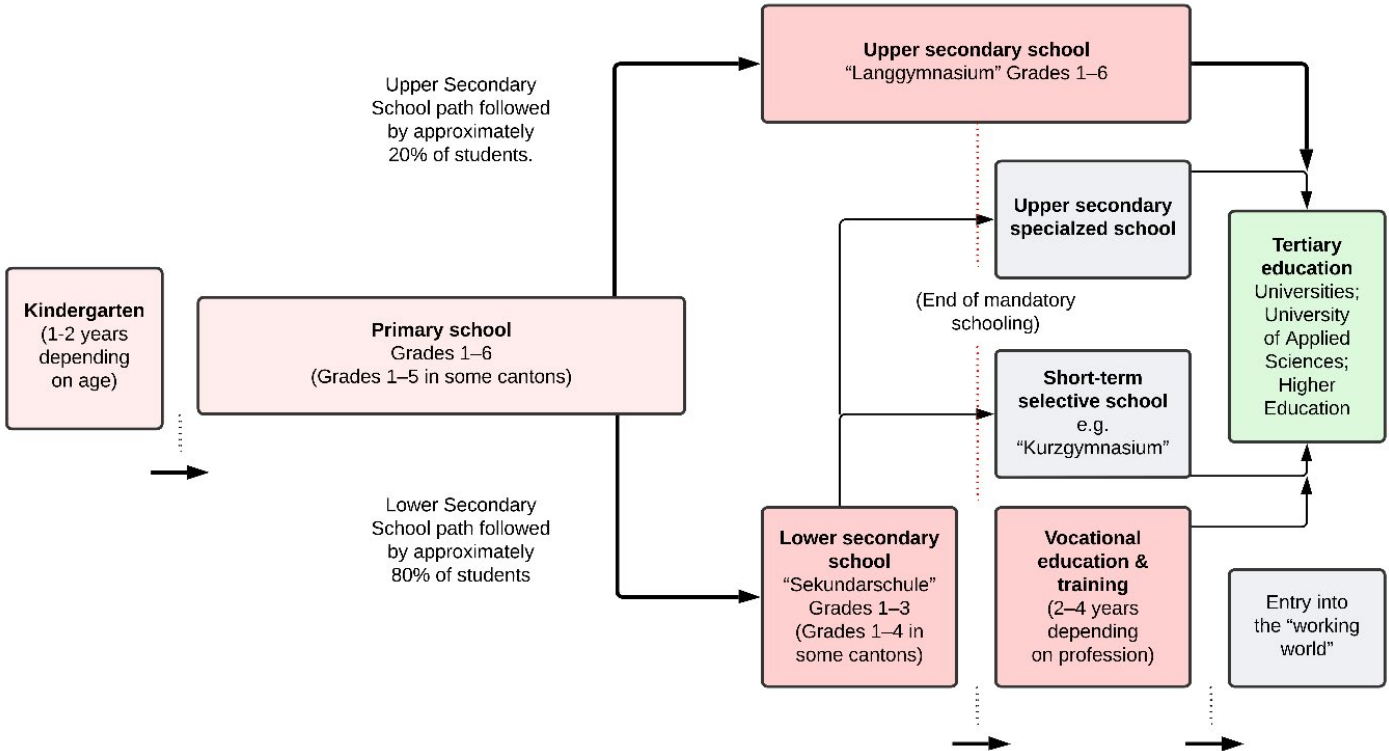
Berlitz

🌐 berlitz.com

Swiss Education System

USEFUL LINK

EDK.CH/EN/EDUCATION-SYSTEM-CH



Special needs education

These children and young people benefit from special measures for their education (from birth to their 20th birthday). They have a right to special schooling and support from specialists in early

childhood special needs education, scholastic special needs education, language therapy or psychomotor therapy.

Switzerland is well known for its thriving banking and financial sector. As a leader in banking services, you can be sure to get excellent banking service whilst living here in Switzerland. Above all, the banking system scores extremely well on security and efficiency. Bank clients are offered services tailored to meet their particular requirements, be it simply opening a bank account with credit and debit cards and e-banking or more sophisticated investment advice. The key to choosing a good bank is to match offerings and client relationship personnel to your own banking needs.

Opening a bank account First of all, you don't need to worry about the language barrier when applying to open a bank account in Switzerland: front-office employees in most major Swiss banks speak English and a few of them even have English versions of their brochures, such as UBS.

Therefore Prime Relocation and UBS are pleased to offer you a comprehensive package of services and financial solutions at preferential terms and conditions.

Opening an account in Switzerland, or anywhere in the world, for that matter, is subject to various regulations, so the first thing you need to know is that the application process can vary depending on your nationality and place of residence. But for your application, there are three things you will need regardless:

- An ID card or passport
- A valid Swiss residence and work permit (or a residence permit plus a Swiss employment contract)
- Yourself

The last point is as important as the first two, because you cannot open a bank account over the phone or send your partner or even your lawyer to

open one for you. Swiss laws require banks to verify a potential client's source of income and confirm his or her identity. At UBS, however, you also have the option of opening an account digitally via the UBS Banking App. You can download the "UBS & UBS key4" app for a digital experience. You will then be guided through the account opening process in just a few steps.

Debit cards (Debit Mastercard or Visa Debit)

Cheque books are not used in Switzerland. The most common card in Switzerland is the debit card linked to your bank account; simply type in your PIN code and authorise the transaction in any shop both in Switzerland and across the borders worldwide. However for foreign payments/transactions we recommend credit cards. For sums lower than CHF 80 you don't even need a PIN.

Credit cards (Mastercard or Visa)

Buy now – pay later. An application form usually requires details of the applicant's salary to receive a credit card with a given limit. With the contactless payment function, it is very convenient to use a credit card even for small amounts – sums lower than CHF 80 don't even need your PIN or signature. This card offers better exchange rates abroad or in foreign currency (especially with key4 card).

Paying bills

Pay your bills with payment slips or "Einzahlungsscheine". You can easily pay your bills in your digital banking on the computer or on the phone by simply scanning the QR-Code. Alternatively, you may prefer to pay regular monthly bills by standing order or direct debit. The new QR-bills can easily be paid, by UBS e- or mobilebanking.

Exclusively for UBS Relocation Clients

They speak your language and dedicate themselves to support you in every aspect of banking:

- Pay and Save – Everything you need for your daily banking
- Online Service – 24 / 7 access to your banking with the device of your choice
- Pension – Optimizing your taxes and saving for retirement
- Financing – Advising on and financing your dream-property
- Investments – Optimizing your assets and generating returns

UBS offers you a Banking Package that has everything you need for your daily banking business. The first six months they even offer the whole bundle of banking products for you free of charge. The Package includes a savings and personal account, a UBS Debit Card, UBS Credit Cards (in various currencies), UBS e-banking and the UBS Mobile Banking app. Whether it is asset, account or card information, payments, securities trading, notifications or changes of address, UBS e-banking and the UBS Mobile Banking App make all your banking transactions simple and convenient. UBS also offers you banking solutions for your children, which are free of charge.

For receiving the cost saving benefits for relocation customers, for scheduling an appointment and for further information about account opening and benefit services from UBS please contact the following shared UBS-mailbox:

relocation@ubs.com

Banking Hours

Typical banking hours are 9am to 12 noon and 2pm to 5pm although many banks in the centre of town stay open over lunchtime. Banks are closed on Saturdays and Sundays and bank holidays.

American Citizens

American and green card holding clients are required by the US Government to observe special regulations in all banking business while residing in Switzerland. Please ask your bank advisor to direct you to the proper member of the bank team authorised to work with such cases.

Currency

The currency is Swiss franc, CHF. The Swiss franc comes in the following denominations: Coins: 5, 10, 20, 50 (Rappen) and 1, 2, 5 francs. Notes: 10, 20, 50, 100, 200 and 1000 francs.

Choosing a Bank – Main Bank

UBS – is the market leader in retail and commercial banking in Switzerland.

YOUR CONTACT AT UBS

REGION GENEVA & LAUSANNE

SÉBASTIEN DUC
HEAD OF TEAM
TEL: +41 21 215 27 15
SEBASTIEN.DUC@UBS.COM,

CAMILA TORRENT
PKI & DEPUTY LM
TEL: +41 21 215 41 25
CAMILA.TORRENT@UBS.COM

UBS.COM
RELOCATION@UBS.COM



Insurance



Helvetia explains which insurances are compulsory and which are optional but strongly recommended in their respective segments: general insurance and health/accident insurance. Switzerland is an expensive country; make sure you have the appropriate cover.

Compulsory insurance: Basic health, accident, motor vehicle and social security insurance.

Optional insurance, that everyone should have: Personal liability insurance

This is one of the most important types of insurances to have. It protects you and your family against major financial consequences if you cause damage to other people or their property. If you scratch the parquet floor of your rented apartment. If you collide with and injure another person while on your bicycle or skiing or if you spill wine on your friends' sofa or your children break the neighbour's window while playing football. The cover is worldwide.

Household contents insurance

Whether it be water damage, a fire in the home or a break-in – household contents insurance covers you for the loss incurred. Worldwide cover also applies to stolen items outside your home, such as your mobile phone, bike or watch.

Accident insurance

All employees are covered by accident insurance which is provided by the employer by law. Should family members not be employed they must be covered separately through private insurance. This can be included as part of the health insurance.

Social insurance – the 3-pillar principle

The purpose of the Swiss pension system with its three pillars is to ensure financial security for people in Switzerland in their old age or in the event of disability. In addition, dependents are covered in the event of death. In Switzerland, provision for retirement is based on three pillars which complement each other:

1st pillar: state provision: old age and survivors' insurance (OASI) – Swiss people usually refer to it by its German abbreviation AHV.

2nd pillar: occupational pension scheme organized by your employer (LOB), also referred to as "pension funds".

3rd pillar: voluntary private pension provision. In the third pillar, the investments are in your name and this provision is voluntary. It is used to cover gaps for old-age provision, risk protection or simply to optimize taxes.

Basic and Supplementary Healthcare Insurance: Mandatory Healthcare Insurance (KVG)

Swiss residents must have mandatory healthcare insurance (basic insurance) with a Swiss health insurer, unless they work for a foreign employer or receive a pension abroad. Their health insurance will cover them against the financial risks of illness, maternity and, depending on their work situation, also against accident.

Benefits

- Outpatient medical treatment
- Medicines in accordance with statutory lists of medicines if prescribed by a doctor (within the indication)
- Hospital treatment in the general ward in line with the base rate in the canton of residence or

hospital treatment in the general ward of hospitals in the directories of the canton of residence

- Abroad: Emergency treatment at up to twice the rate of the canton of residence or as per bilateral agreements with EU and EFTA countries

Supplementary Insurance under the Insurance Contract Act (VVG)

With supplementary insurance you can extend your cover to suit your needs and receive attractive contributions towards health promotion and preventive healthcare.

Benefits

- Medication not covered by mandatory health insurance if prescribed by a doctor (within the indication)
- Complementary medical benefits
- Vaccinations, medical check-ups, health promotion
- Dental/orthodontic treatment
- Emergency treatment abroad including return transport to Switzerland
- Emergency transport
- Elective outpatient treatment worldwide
- Private room, two-bed room or multi-bed room worldwide
- Free choice of doctor/hospital worldwide

Helvetia expat services

Specialized consultants with good English knowledge. Many years of experience within the expats segment. 24/7 support in case of claims. Excellent customer rating.

Feel free to contact them: prime@helvetia.ch





REGA
"SWISS AIR-RESCUE"
ONE OF THE AIRBUS
HELICOPTERS

In general

No vaccinations are required to enter Switzerland. It is however important to bring any previous medical certificates or records with you from your home country. Swiss medical facilities are among the best in the world and of a very high standard, which is why there is a hospital or clinic on nearly every street corner. However, health care is expensive and it is recommended that you obtain adequate health insurance soon after arrival.

Doctors

Once here, you should set up a general practitioner to refer to in case of illness – it is a matter of going along and trying them out until you find one that suits you best. The general practitioner will then refer you to a specialist or hospital if needed. Generally, it is common to have a separate doctor for children, a paediatrician who are specialised in treating children and women usually need to locate a gynaecologist for an annual check-up.

Listing of all doctors and dentists in Switzerland, [doctor.ch](#)

Pharmacy

In every neighbourhood you will find pharmacies that are open during regular working hours. Swiss supermarkets do not sell any medications. For over-the-counter medications, such as painkillers and cough syrups, you need to go to a pharmacy.

24-hours pharmacies

Pharma24

Pharmacie de Garde Genevoise
Boulevard de la Cluse 38, 1205 Genève
022 808 00 18

Pharmacie 24

Avenue de Montchoisi 3
021 613 1224

Please refer there for emergency medication. Also, just next to this pharmacy is a medical centre, just in case your doctor cannot see you in time or on weekends/evenings.

Hospitals in Geneva

La Clinique de Carouge

[cliniquedecarouge.ch](#)

Centre Médical de Lancy

[cmlancy.ch](#)

HUG

Hôpitaux universitaires de Genève

Rue Gabrielle-Perret-Gentil 4, 1205 Geneva
[hug.ch](#)

Hôpital de la Tour

Avenue J.-D.- Maillard 3, 1217 Geneva
[la-tour.ch](#)

Clinique des Grangettes

Chemin des Grangettes 7, 1224 Chêne-Bougeries
[hirslanden.ch/fr/clinique-des-grangettes/home.html](#)

Clinique Générale Beaulieu

Chemin de Beau-Soleil 2
1206 Genève
[beaulieu.ch](#)

Main public hospital in Lausanne

CHUV

Centre Hospitalier Universitaire Vaudois
(one of the biggest in French part of Switzerland and ranked amongst the best in the world)
[lausanneuniversityhospital.com/home](#)

Private Clinics

Clinique Bois Cerf

[hirslanden.ch/en/clinique-bois-cerf/home.html](#)

Clinique La Source

[lasource.ch](#)

Clinique Cecil

[hirslanden.ch/en/clinique-cecil/home.html](#)

Clinique Montchoisi

[montchoisi.ch](#)

Emergency centres

Centre médical de Vidy

[vidymed.ch/centre-medical-de-vidy.html](#)

Centre médical la Source

[vidymed.ch/centre-medical-de-la-source.html](#)

Centre médical d’Epalinges

[vidymed.ch/centre-medical-d-epalinges.html](#)

Centre Le Flon

[flon.ch/fr/locataires/services/7/sante-bien-etre/35/permanence-unisante-du-flon/99/](#)

Medical Emergency numbers

Ambulance:	144
Fire service:	118
Police:	117
Poisons information:	145
Rega (air rescue):	1414

Doctor-on-duty **Geneva:** 022 754 54 54
Doctor-on-duty **Lausanne:** 0843 133 133



USEFUL LINKS

MEDICAL CENTRE
PERMANENCE-MEDICALE.CH

SOS MÉDECINS
SOS-MEDECINS.CH

MEDBASE

MEDBASE.CH/FR/
LESCENTRES/DETAIL/
MEDBASEGENEVE-GARE-
CORNAVIN/

MEDBASE.CH/STANDORTE/
DETAIL/MEDBASE-LAUSANNE-
GARE/

EN.COMPARIS.CH/
KRANKENKASSEN/UMFRAGE/
HITLIST.ASPX

HÔPITAUX UNIVERSITAIRES
DE GENÈVE



Post Office



POST.CH



1843 DOUBLE GENEVA
FIRST STAMP FROM THE
CANTON OF GENEVA

HOW TO SEND MAIL



Switzerland has a very efficient postal system. Opening hours of your local post office vary according to branch, but generally they are closed from 12pm to 2pm for lunch and at 11am on Saturdays. Post offices in city centres are usually open during lunch time.

Post offices offer a diverse selection of things to buy including stationary, magazines, confectionery, mobile phones and gift cards for all kinds of shops and institutions.

Parcel Collection Notice

Should you receive a parcel and not be at home, the postman will put a yellow slip of paper in your letterbox and ask you to go and collect it from your post office (always take proof of identification with you). As a rule, the post will keep the parcel for a week and then return it to the sender if you do not pick it up in time.

Mail in Switzerland is sent by either A or B post. With A post, delivery is promised for the next day or B post within 2–3 working days.

Swisspost App

Write: TIMBRE and send SMS to 414. Receive one time code to write on your letter then post.

Postage for standard letters (CHF)

25 x 17.6 x 2cm and up to 20g is as follows:

	A	B
Switzerland	1.20	1.00
Europe	1.80	–
Overseas	2.30	–

Change of Address

When you move you have to inform the post office who will forward your mail to your new address within Switzerland. You may do so at the counter or online under post.ch.

Temporary Mail Stop

Should you be planning to go away for a short break, you can get your post forwarded to your holiday address or cancel the post for a week or two for holidays and get it sent to you in your letterbox on your return. Fill out a form at the post office or do it online. This saves the rather small letter boxes from overflowing.

Post Finance

You can open a “Postscheckkonto” at your local post office. This enables you to pay your bills as well as make cash withdrawals using the postfinance card. You may also make payments in many shops using this card – similar to an EC card from other banks.

postfinance.ch



Public Transport

Public transport in Switzerland is extremely efficient and runs very smoothly – everything is timed to perfection. Lots of places can be reached through a network of trains, buses, boats and cable cars. The yellow Swiss “Postbus” links smaller more remote villages with the nearest train station. Swiss railways, the SBB, have a great website and app which will help you when you plan a journey www.sbb.ch – this gives you access to timetables of the trains, boats and buses which enables you to plan a journey from Zürich to Rome and shows all of the train changes necessary plus platform details.

Useful public transport apps

- SBB Mobile
- Moovit
- FAIRTIQ (Begin and end your journey in the app that’s it! No more tariff zone chaos)

Tickets and season tickets

If you want to use the train, you must buy a ticket before the journey. Tickets cannot be bought on the train. This is regulated differently on buses. There are ticket machines at every railway station and at most bus stops, and in larger stations there are also staffed ticket offices. Tickets can also be bought online or by mobile phone. For people who travel a lot, there are various season tickets. These are available for individual routes, individual areas or the entire Swiss transport network (general season ticket).



Various Abonnements

Children under six years of age travel free. Purchase a junior card or “Juniorkarte” for 6–16 year olds who can then travel for free if accompanied by a parent – it costs approx. CHF 30 and lasts for a year. The third child receives his/her card free when you buy cards for the first two kids!

SwissPass

The SwissPass is more than just a Half-Fare travelcard or GA travelcard as it offers you access to partner services from Mobility Carsharing, PubliBike, SwissMobile and ski resorts. Thanks to the SwissPass you no longer have to think about renewing your travel card and so you automatically stay mobile. Your SwissPass Card is valid for several years and will be automatically renewed on the same card. SBB reminds you of the optional cancellation deadline in good time prior to the automatic travelcard renewal.

Half-Fare travelcard

It is advisable for adults to buy the Half-Fare travel card or “Halbtax” to get a reduced fee for train and bus travel and is also valid for certain mountain cable cars and trains. It costs CHF 185 (in the first year) and CHF 165 in the following years.



CFF RAILWAY WAGON WITH
CHILDREN’S PLAYGROUND

Public Transport

USEFUL LINKS
LAUSANNE

PUBLIC TRANSPORT
TL - TRANSPORTS LAUSANNOIS
T-L.CH

USEFUL LINKS
GENEVA

PUBLIC TRANSPORT
TPG - TRANSPORTS PUBLICS
DE GENÈVE
TPG.CH

THE COMPAGNIE GÉNÉRALE
DE NAVIGATION
CGN.CH



LAUSANNE METRO

GA travelcard (General Abonnement)

A GA Travelcard covers all public transport in Switzerland. It costs approx. CHF 4'000 for an adult in second class for one year. Various partner and family price reductions are offered.

One day GA ticket

If you are planning a longer trip within Switzerland, you can buy a day pass (Gemeindetageskarte) at a reduced price in many municipalities. The offer is limited, you have to reserve the ticket early enough. Information on this is available from the municipal administrations.

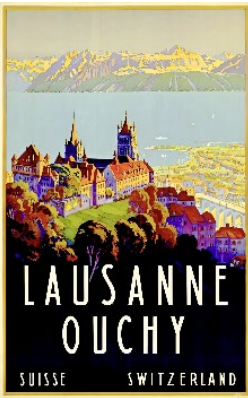
Further information

Dogs and cats travel free if you carry them in a basket, otherwise you must purchase a half price ticket for them. If you want to take a bicycle on the train or bus, you need a special ticket for it. It is not always possible to take a bicycle everywhere. Sometimes a reservation on the train must be done in advance. It is easy to travel with push chairs and you can just wheel your pram on. Choose the carriages with the pram sign and it is usually possible to lift the first set of seats and fit the buggy in.

Metro in Lausanne

Lausanne is the only city in Switzerland having not one but two metros (a 3rd line being currently developed).

The “M1” was the first to be created back in 1991. Its route joins the city centre of Lausanne (Departure from the Flon) and goes west all the way



VINTAGE
TOURISM
POSTER

to Renens Station, passing through the University campus.

The “M2” was built way later, back in 2008 (automatic with no driver). Its purpose is to join the south of Lausanne (Ouchy) all the way to the north (Croisette) in crossing the city.

The “M3” Lausanne–Blécherette station to cope with the increase in passengers passing through Lausanne station and to serve the developing districts in the north of the city, a third metro line will complete the network in 2030.

Public transport on the lake

The Compagnie générale de navigation (CGN) sur le Lac Léman, General Navigation Company is a public Swiss company operating ships on Lake Lemman, connecting towns in both France and Switzerland including Geneva, Vevey, Montreux, Évian-les-Bains, and Lausanne.

PADDLE STEAMER “RHÔNE” ON THE LAKE LEMAN



Driving

Under Swiss law you need to carry a few things with you in your car at all times:

- a red breakdown triangle and bright yellow vest
- your driver's licence
- the vehicle's registration papers
- the car's exhaust test certificate
- insurance documents
- plus a European Accident Report to be filled out in case you have an accident, supplied by your insurance company.

If not regulated otherwise by traffic signs, priority to the right applies. buses, trams, ambulance and police cars always have priority! If you have or cause an accident because you didn't give way to cars coming from the right, you will be liable.

When driving uphill, the car driving UP has priority, so if you meet a car and you cannot pass, the one descending the hill should back up.

Driver's licence

Your foreign driving licence is valid for one year. After that, you are required to have a Swiss licence. You need to exchange your foreign licence for a Swiss licence; this is still possible after the 12-month grace period, but you may have to pay a fine. The procedures vary depending on which country issued the foreign licence. In any case, you must produce the original driving licence and take an eye test. For more information about your specific situation, contact your canton's driver and vehicle licensing office (Strassenverkehrsamt).

Traffic rules are very important to drivers in Switzerland. The fines are very high compared to

other countries. Serious violations of the rules can result in the revocation of the driver's licence.

Some important rules:

Maximum speed in towns	50 km/h
outside towns	80 km/h
motorway	120 km/h

It is possible to **pass on the right**, left, or middle lane in the event of a traffic jam, slow-moving column traffic, or an accident. However, this should not be confused with **overtaking** on the right, as such overtaking maneuvers remain prohibited.

Lights must also be switched on during the day. All persons in a car must wear a **seat belt**. Children must be seated in a **child seat** (up to 12 years or a height of 150 centimetres).

While driving, **telephoning** is only permitted with a hands-free system Driving under the influence of **alcohol or drugs** is a punishable offence (bloodalcohol limit 0.5mg / L blood-alcohol level) Pedestrians on the **pedestrian crossing** always have the right of way (except whencrossing is regulated by traffic lights).

Speeding cameras are prevalent throughout Switzerland. There are set fines for low over speeding, and percentage fines on your gross income on high over speeding.

Winter

It is highly recommended to use winter tyres to cope with the wintry conditions we enjoy in Switzerland. Aim to change your tyres from summer to winter tyres around mid-October and back again to summer tyres around April. You will be liable if you have an accident in wintry conditions and you haven't



CAR SHARING
MOBILITY.CH

ROAD TRAFFIC OFFICE
GENEVA

GE.CH/DOSSIER/VEHICULES-
CONDUCTEURS

ROAD TRAFFIC OFFICE
LAUSANNE

VD.CH



Driving

got the correct tyres. If you are driving to the mountains, it is advisable to carry snow chains in the vehicle, unless you have a four-wheel drive. Those can be rented or purchased. Chains are relatively inexpensive but are invaluable if you are caught in bad weather. Before the trip, read the instructions and do a trial run of putting them on. Keep a pair of gloves with the chains; hands get cold very quickly. You may want to join the TCS or “Touring Club Suisse” which is the Swiss rescue service for breakdowns. Membership isn’t expensive and it may well be worth it – see their website on tcs.ch.

Motorway tax / Road Tolls

Roads are financed by the federal government, cantons and municipalities. The use of roads is free of charge. The motorways are an exception: If you want to use the motorways, you have to buy a vignette every year. This is stuck to the windscreen and costs CHF 40. Buy your new one by the end of January each year. It is available at petrol stations, post offices, and at custom offices at the border. You can also get it online – (e-vignette) via: e-vignette.ch.

What to do if you have an accident

If you are involved in a minor accident where police assistance is not needed, note the registration numbers, names and addresses of all parties and witnesses. Complete the European Accident Report, have it signed and send it to the insurance company even if it was not your fault. It is advisable to report any minor accident to the police within 24 hrs to avoid any repercussions or problems with your insurance claim later on. If you witness an accident you must stop by law, offer assistance and provide evidence. Call the police 117 and the ambulance 144 if needed.

Parking

Only park where you are allowed in clearly marked areas. Official parking places in Switzerland are all marked and in most cases chargeable. Do not renew your time in the same parking space, as you will risk getting a fine. Marked areas may be white, blue or yellow. White is free, yellow is private and blue is for parking with a parking disc. To park in a blue area, set your parking disc to your arrival time and check how long you can stay – usually it is 1 hour for free.

Finding a used / new car?

As an expatriate, your requirements may differ from the ones of a regular car buyer in Switzerland. Autociel, they understand that completely. Instead of selling you a particular brand or model of car, they focus on understanding your requirements and finding you the car you need. So, whether or not you have a clear idea about your dream car, their experts offer friendly consultation on which car will serve you and your family the best. With a huge range of brands and models on offer, they get your dream car in a completely hassle-free manner.

Leasing a car

Leasing a car in Switzerland as an expat can be a complicated process. However, paying a hefty down payment and sky-high credit rates are not your only options. Autociel, they ensure that you get to lease a car at a reasonable price and contract terms. Thanks to their extensive experience of working with expats, they can offer you a hassle-free car leasing service if you have a valid work permit even with an L residency permit.

autociel.ch/expat



Komoot

The bike and hike tour planner for Switzerland.

komoot.com

Bicycles

A well-developed network of cycle paths makes cycling in Canton Zug and Lucerne very pleasant. Many working people use the bicycle to get to work. There are special hiking trails for pedestrians or hikers. Bikes may be rented at main railway stations or bike shops.

Rules for cyclists

To ride a bicycle in Switzerland, you do not need a special pass or a test. In general, the same traffic rules apply as for car drivers. If there are special cycle paths or lanes, these must be used. The bicycle must be roadworthy (two good brakes, bell, reflectors front and rear and on pedals, lights front and rear). There is no obligation to wear a helmet, but a helmet is recommended. Cyclists should in any case take out personal liability insurance, as they are liable for damage (to persons or objects).



BICYCLES TO RENT
AT THE SBB STATION
SBB.CH



GENEVA INTERNATIONAL
MOTOR SHOW AT PALEXPO.
GENEVAMOTORSHOW.COM



THE PARKING DISC YOU WILL
NEED A LOT IN THE CITY, FOR
THE BLUE PARKING ZONE.



Shopping



CUSTOMER CARDS
FROM THE TWO
LARGEST RETAILERS
COOP AND MIGROS.

Shopping in Switzerland is considered to be more expensive than in other European countries and restricted in choice. However, there is now a greater variety of supermarkets (the largest being Migros and Coop and the smaller, cheaper ones are Lidl, Aldi, Denner) that offer fresh local products. All of your other shopping requirements will be met quite easily in your high streets. Switzerland does not have a great culture of “mall” shopping, which you might be used to from home but there are a few larger shopping centres that are well worth a visit.

Supermarkets

Opening hours are more restricted here than in either the UK or US. Smaller supermarkets in villages close for the lunch period. On Saturdays, most of the shops close at 6pm, in small villages they might close earlier. In Lausanne or Geneva the shops stay open longer – until 6 or 7pm in the main shopping district. Supermarkets are generally open from 8am till 7pm daily.

The two main supermarket chains are “Migros” and “Coop”. Migros mostly sell their own branded food and don’t sell alcohol or tobacco, which Coop does! Both stores offer loyalty cards – Migros has the “Carte Cumulus” and Coop the “Supercard” which are well worth having. With the Cumulus card, you are awarded vouchers which you can then use as cash to pay in the shop and with the supercard from Coop, you can shop at Coop City and pay with your points or choose something from their catalogue or even turn your points into air miles. Application forms are available from the customer services desks.

Online shopping

Migros and Coop both offer an online shopping and home delivery service. See coop.ch and shop.migros.ch.

Should you run out of something out of shopping hours try:

- Petrol stations – mostly open 7 days a week
- Railway station shops
- Airport shops

Organic food

Organic food in Switzerland is called “Bio”, there are specialised shops selling Bio as well as the farm shops. Specialty foods can be bought in the gourmet shops like Globus and Manor Food. There are also a number of ethnic shops available.

Clothes Shopping

Generally, the shops in the high street are open from 9am till 7pm during the week. The biggest and finest department stores in Geneva and Lausanne are “Globus” and “Manor”, where you will find a good selection of everything.

Foreign online shopping:

- aussieshop.ch
- bofrost.ch
- cheeseclub.ch
- britshop.ch
- jimsbritishmarket.com
- tasteofamerica.ch
- americanmarket.ch
- myexpatshop.com
- dutchstore.ch



TH FAMOUS
SAUCISSONS
VAUDOIS.

Shopping centres

There are bigger shopping centres around, which may just be a short train ride or car journey away. The largest shopping are:

Geneva

Halle de Rive (Fine Food)

🌐 halle-de-rive.ch

Balexert

Avenue Louis-Casaï 27, 1209 Vernier

🌐 balexert.ch

Centre La Praille

Mall with restaurants, cinemas and shops.

Route des Jeunes 10, 1212 Grand-Lancy

Lausanne

Centre Commercial Migros Crissier

🌐 centre-migros-crissier.ch

Centre Métropole

Rue des Terreaux 25, 1003 Lausanne

🌐 mymetropole.ch

Léman Centre Crissier

Chemin de Saugy 1, 1023 Crissier

🌐 leman-centre.ch

Markets in Lausanne and Geneva

There are a number of local markets that are well worth visiting if you enjoy fresh, local produce or organic food.

There is a market in Lausanne on Wednesday and Saturday in the streets of the city centre (8am –

2:30pm). Go along and have a look at what’s on offer – everything from flowers to farmer’s products.

On Wednesdays and Saturdays, the people of Geneva go to the weekly market in Carouge, on the other bank of the Arve. Here you will find fresh fruit, vegetables and flowers from the surrounding region. There is also one in Plainpalais as well as in Rue de Rive that are well known in Geneva.

Furniture shopping

There are an abundance of places to buy furniture in and around Geneva and Lausanne. Also, many people from Geneva and Lausanne go shopping in France, as it is very close.

Shopping in Geneva

Rue du Rhône offers many well-known high street brands.

Rues Basses do have trendy boutiques and vintage stores.

Manor

Rue Cornavin 6, 1201 Geneva

or

Route de Thonon 40, 1222 Vesenaz

Globus

Rue du Rhone 48

1204 Geneva

Bon Genie Grieder

Rue du Marché 34

1204 Geneva

🌐 bongeniegrieder.ch



MARKETS IN
LAUSANNE AND
GENEVA.

Shopping

Electronics and various appliances

Fust (several shops)
Rue de Rive 3b
1204 Genève

Mediamarkt
Route des Acacias 43, 1227 Carouge
Or
Chemin Riant Bosson 15-21, 1217 Meyrin

IKEA
Route de Vernier 156
1214 Vernier

Pfister
Chemin Riant Bosson 7
1217 Meyrin

Micasa
Avenue Vibert 32
1227 Carouge

Shopping in Lausanne

Maison du Monde de Crissier
maisonsdumonde.com

Rue du Bourg
Various individual shops

Globus
Rue du Pont 5, 1003 Lausanne

Manor
Rue Pichard 3, 1003 Lausanne

BG Grieder
Place St François 10
1003 Lausanne

Electronics and various appliances

Fust (several addresses in Lausanne)
Place Centrale 1, 1003 Lausanne
Mediamarkt
Rue de Morges 13, 1023 Crissier

Outside Lausanne
Around 15 min. drive – furniture etc.

IKEA in Aubonne
Le Pré Neu, 1170 Aubonne
ikea.com/ch/fr/stores/aubonne

Outlet Aubonne
Chemin, Pré-Neuf 14
1170 Aubonne
outlet-aubonne.ch

Pfister in Etoy
Centre de l’Habitat, Route de
l’Industrie 10
1163 Etoy
pfister.ch/de/filialen/etoy

Micasa in Etoy
Route de Noyer-Girod 3, 1163 Etoy
micasa.ch

Hornbach in Etoy
Route de l’Industrie 6
1163 Etoy
hornbach.ch/mon-magasin/
magasin-de-bricolage-etoy-vd

Casa in Etoy
Route de Buchillon 2
1163 Etoy
ch.casashops.com

Maison du monde in Etoy
Route de Noyer-Girod 6
1163 Etoy
maisonsdumonde.com/CH/fr/
magasins/etoy-500



International Clubs and Societies

Ask your local council for a list of the clubs and societies in your town if you would like to get to know some people either locals or expats. Many clubs of various interest groups can be found in larger cities close by, especially in Geneva and Lausanne. Here are a few of the mains ones.

International club

American International Club of Geneva
amclub.ch

American International Women’s Club of Geneva
aiwcgeneva.org

Rotary Club Geneva
rc-geneve-international.org

Rotary Club of Lausanne
lausanne-international.rotary1990.ch

International Women’s Club of Lausanne
iwc-lausanne.org

Know-it-all

English-language guidebook and community website for Geneva, Vaud and neighbouring France featuring local information, events and various activities. It has become THE reference book for anything you want to know from shopping, housing, and education to birthday party venues to cheese and chocolate! It includes pages of information on winter activities, public transport info, rules and regulations, and much more...
knowitall.ch

Other useful internet sites for information, chats and outings

Meet Geneva’s international expatriate community
internations.org

Business directory
expat.com
englishforum.ch
xpatxchange.ch
swissworld.org

Facebook groups
Geneva Expats
Lausanne/Vaud Expats

Places of Interest

Introduction

Lausanne and Geneva offers a wide variety of leisure activities for beautiful sunny as well as rainy days. There are also many options for winter activities, such as skiing, snowshoe walking and much more. As France is so close from Geneva or Lausanne, you can also plan a day trip abroad.



Places of interest in and around Geneva (France)

Annecy

Considered as the Venice of the Alps.

- 🌐 en.lac-annecy.com
- 🌐 tourisme-annecy.net
- 🌐 lac-annecy.com



ANNECY

Yvoire

Medieval village in front of Nyon alongside Lake Lemman.

- 🌐 yvoire-france.com

Chamonix

Summer/winter resort on the foot of Mont Blanc, highest peak of Europe.

- 🌐 chamonix.com
- 🌐 chamonix.net



CHAMONIX
MONT BLANC

Megeve

Summer/winter resort facing Mont Blanc.

- 🌐 megeve.com



BOURG MÉDIÉVAL
D'YVOIRE LA CÔTE

Museum

Museum of Ethnography of Geneva

The MEG is home to one of the finest collections of ethnography in Switzerland.

- 🌐 ville-ge.ch

CERN

European Nuclear Research operates the largest particle physics laboratory in the world.

- 🌐 visit.cern/tours

Museum of Natural History

This is a great museum for both adults and children to see almost all kinds of stuffed animals, human/animal replicas, jewel stones and other neat exhibitions.

- 🌐 institutions.ville-geneve.ch

Mamco Museum of modern art

- 🌐 mamco.ch

Kids

Le Bois-De-La-Bâtie

Park with a big playground, paddling pool, free mini-zoo.

- 🌐 geneve.ch/fr/bois-batie

Conservatoire et Jardin Botanique

The botanical gardens are filled with birds, animals and picturesque gardens.

- 🌐 ville-ge.ch/cjb/

Yatouland

Features bouncy castles, a soft play area for toddlers 0–3 years, trampolines and laser tag for older children.

- 🌐 yatouland.com

Places of interest in and around Lausanne

Maison Cailler

Visit the Cailler factory to see how their chocolate is made and to enjoy some samples.

- 🌐 cailler.ch/en/maison-cailler

Fondation de l'Hermitage

- 🌐 fondation-hermitage.ch

Castle of Chillon

Most famous castle along side Lake Lemman.

- 🌐 chillon.ch

Montreux

World most famous jazz summer festival.

- 🌐 montreuxjazzfestival.com

Evian – France

25 min by boat in front of Lausanne in France Thermal town with its famous water.

- 🌐 tourism.evian-tourisme.com

Museum

Aquatis

Europe's biggest pure water aquarium. "Aquatis".

- 🌐 aquatis.ch

Musée Cantonal de Design et d'arts appliqués contemporains – mudac

- 🌐 mudac.ch

International Olympic museum in Ouchy

- 🌐 olympic.org/museum

Chaplin's world in Vevey

Paying tribute to Charlie Chaplin's life: experience the museum.

- 🌐 chaplinsworld.ch

Nestlé's food "alimentarium"

World first food museum

- 🌐 alimentarium.org

Kids

Aquaparc

Biggest indoor/outdoor water park in the French part of Switzerland.

- 🌐 aquaparc.ch

Bouveret

Small steam train park.

- 🌐 swissvapeur.ch

Zoo in Servion (FR)

The Zoo in Servion (FR) is a fascinating place for both children and adults. It is located just outside Lausanne on the edge of the Jorat forest.

- 🌐 zoo-servion.ch

Espace Junior

Bouncy castles, electric cars, trampolines etc.

- 🌐 region-du-leman.ch/en/P19936/kids-zone



CHÂTEAU DE CHILLON

Places of Interest



THE ALIMENTARIUM
THE WORLD'S FIRST FOOD
MUSEUM IN VEVEY.



AQUATIS IN LAUSANNE
THE LARGEST FRESHWATER
AQUARIUM AND VIVARIUM IN
EUROPE.

Skiing

All winter/summer resorts are family-friendly and offer various types of activities. You'll also find more resorts in Valais where you have many famous ones like Verbier – Crans-Montana – Champéry- "Portes du Soleil" (linked to France) – Saas Fee and of course Zermatt with its Matterhorn.

In the link below, you will find all ski resorts in the region of Vaud, Valais, Fribourg, Jura and Three Lakes.
🌐 stations-de-ski.ch

Highest point of the Canton of Vaud with its Glacier 3000, **Villars-Gryon** guarantees ideal snow conditions from October to May. Also family-friendly with its snow garden, it is a great resort for young skiers.

Villars-Gryon ski area

Villars-Gryon – Les Diablerets – Bex
🌐 villars-diablerets.ch

In the heart of the Vaud Alps, the **Leysin-Les Mosses-La Lécherette ski resorts** have 100 kilometres of groomed slopes between them. With its tobogganing park, it also offers a lot of fun with family or friends.
🌐 aigle-leysin-lesmosses.ch

With its panoramic view, **Rougement** is linked to Gstaad and offers various type of slopes. Rougemont ski area. Pays-d'Enhaut
🌐 chateau-doex.ch

Half of Geneva's residents go to Valais and the other to France as per below examples.



Haute-Savoie, France

Chamonix

Due to its highest peak of Europe, Mont Blanc, Chamonix (around 1 hour from Geneva) attracts tourists from all over the world, the panoramic view is breathtaking, with a variety of unbelievable skiing for all.

Megeve is a historical ski resort in a marvellous natural environment. Skiing adventures, skiing as a family or enjoying one of the sunny mountain terraces, Megeve offers various options.
Megève Tourisme
🌐 megeve.com

Avoriaz is a pedestrian resort with a link to Switzerland ("Portes du soleil"). It offers many activities for all type of skiers.

Next 2 resorts are further away, however very famous as well.

Savoie, France

Val d'Isere is a mountain village located at an altitude of 1,850 meters. With its wooden and stone chalets, this international resort has been given the status of the "Mecca of skiing" due to exceptional snow cover from November to May.
🌐 valdisere.com

With its 600km of slopes, **Courchevel** is the world's biggest ski resort, trendy & jet set as well.
🌐 courchevel.com

Public Holidays

Public holidays in Switzerland are defined on a cantonal basis and therefore differ slightly from canton to canton. The more catholic cantons (such as Schwyz, Zug & Lucerne) get a few more holidays than protestant cantons (i.e. Zürich)! For information about regional holidays please refer to your HR department or your school's office.

USEFUL LINK
[FEIERTAGSKALENDER.CH](https://feiertagskalender.ch)

January 1	New Year's Day
January 6	Three Kings Day
March 19	St. Joseph's Day
March 30	Good Friday
April 2	Easter Monday
April 16	Spring Festival (ZH only)
May 1	Labour Day
May 10	Ascension Day
May 21	Whit Monday
August 1	Swiss National Day
August 15	Assumption Day
September 16	Swiss Federal Fast
December 8	Immaculate Conception
December 25	Christmas Day
December 26	St Stephens Day

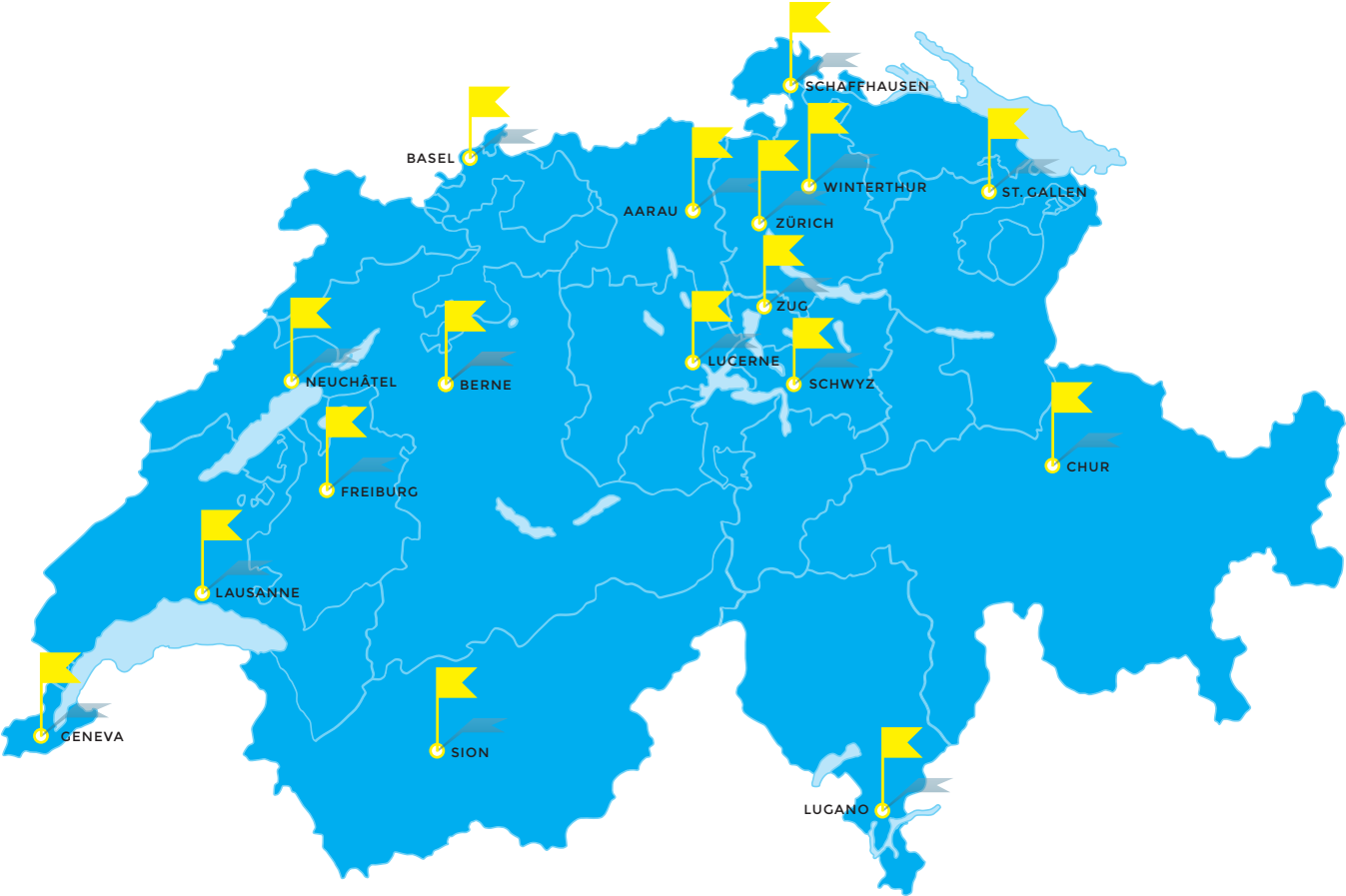
Neujahrstag
Dreikönigstag
St. Joseph Tag
Karfreitag
Ostermontag
Sechseläuten
Tag der Arbeit
Auffahrt
Pfingstmontag
Nationalfeiertag
Maria Himmelfahrt
Betttag
Maria Empfängnis
Weihnachten
St. Stephan



DREIKÖNIGSKUCHEN
THREE KINGS DAY CAKE



Switzerland-wide Coverage by Prime Relocation



PUBLISHER PRIME RELOCATION GMBH
CONCEPT & DESIGN ANDRES GYSSLER
PRODUCER PRINTIMO AG

© PRIME RELOCATION 01 | 2024



FEELING AT HOME IN
GENEVA AND LAUSANNE

Prime Relocation GmbH

Industriestrasse 47
CH-6300 Zug
Switzerland

T +41 41 760 74 41
info@primerelocation.ch
www.primerelocation.ch



PROUD HOLDER OF THE
EURA QUALITY SEAL PLUS
SINCE 2016



FULL MEMBER OF EURA,
THE EUROPEAN RELOCATION
ASSOCIATION



PRIME RELOCATION IS A
PROUD MEMBER OF HARMONY
RELOCATION NETWORK