

feeling at home

Welcome to Canton Schwyz. Settling-In Tips and Useful Information.

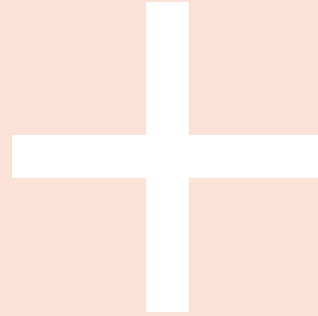


Table of Contents



FLAG OF
CANTON SCHWYZ

- 3 General Information on Switzerland and Canton Schwyz
- 6 Map of Canton Schwyz
- 7 Customs, Visas and Permits
- 8 International Moving
- 10 Importing
- 12 Accommodation
- 17 Furniture Rental Services
- 18 Cost of Living
- 21 Waste Disposal and Recycling System
- 22 Schooling and Education
- 26 Banking
- 28 Insurances
- 30 Legal, Tax and Compliance
- 31 Medical
- 32 Post Office
- 33 Public Transport
- 35 Driving
- 38 Shopping
- 41 International Clubs and Societies
- 42 Festivities in and around Schwyz
- 43 Places of Interest
- 49 Public Holidays
- 50 Switzerland-wide Coverage by Prime Relocation

WE THANK THE OFFICE FOR THE ECONOMY OF CANTON SCHWYZ FOR THE FINANCIAL SUPPORT AND THE PROVISION OF SOME BEAUTIFUL PICTURES.

© UNLESS OTHERWISE STATED, THE RIGHTS TO THE PICTURES ARE HELD BY THE OFFICE FOR ECONOMY OF CANTON SCHWYZ.

General Information on Switzerland and Schwyz

Switzerland consists of 26 cantons in the present day. Schwyz is one of its three original, German speaking, founding cantons. Switzerland's name is derived from the canton's name and the Swiss flag is based on Schwyz's coat of arms.



Switzerland has four official languages; German, French, Italian and Romansch. It is split into different linguistic areas, the French area located south-west, the German area which is mostly in the north and the Italian area which forms the south east. Romansch is only spoken in the south-eastern Canton of Graubünden.

Schwyz

Schwyz is beautifully located in central Switzerland, between the Alps in the south, Lake Lucerne to the west and Lake Zurich in the north. It combines lakes with mountains, agriculture with high tech industry. It provides the tranquility of the countryside, yet is in close proximity of larger towns and cities. Schwyz has one of the lowest crime rates in Switzerland, and offers a very comfortable

lifestyle. This is perhaps the reason why so many residents, including prominent figures in sport, economics, culture, politics and entertainment, choose it as their home.

On the one hand, Schwyz is a dynamic business centre with an international flair, and on the other hand, it is a small provincial canton in the centre of Switzerland, providing a pleasant home to over 160,000 inhabitants. The biggest towns are Pfäffikon and Küssnacht am Rigi. The canton offers its population a quality of life that once you have experienced, you won't want to leave ... hopefully!

MYTHEN PEAK AND
LAKE LAUERZ

Schwyz covers an area of about 908 square kilometres, most of which is used for agriculture or is forested. English is widely spoken and understood by shop owners and restaurant staff alike, but it is of course beneficial to learn at least some words in German so that you can order your drinks in the local language and the Swiss appreciate every small effort you make. The majority of the canton's population are Swiss but one fifth are foreigners.

Schwyz has a very good public transport system with a wide variety of bus routes, and local trains, but the roads can become blocked at peak periods, so it is advisable to use local transport where possible.



"DER BUNDESBRIEF" 1291
THE OLDEST CONFEDERATION
PARER OF SWITZERLAND,
ARCHIVED IN SCHWYZ.

General Information on Switzerland and Schwyz

USEFUL LINKS
SZ.CH
SCHWYZ-TOURISMUS.CH
MYSWITZERLAND.COM
SWISSWORLD.ORG

The canton lies between Zurich to the north and Lucerne to the west, which means that a variety of shopping and cultural activities are only half an hour's drive or a short train ride away.

The Bös Fülen is the highest mountain in the canton (2,802m) but the Rigi (1,797m) is perhaps the most famous one, offering a great place to enjoy walks and short hikes in every season of the year.

What else is Schwyz famous for? It is home to the Forum of Swiss History and founding documents of the Swiss Confederation. Similar to Zug, it is also famous for cherries and cherry specialities, low taxes, and Swiss army penknives, which come from here.

BÖS FÜLEN



Climate and Seasons

The seasons in Switzerland are very well defined. In spring (March to May) you can see the trees blossoming and the meadows turning green. In summer, air temperatures reach between 25 to 35 and the water temperature of the lake between 19 to 23 degrees, which is perfect for swimming. From September to November autumn shows itself through the leaves changing colour and falling off the trees. In winter (November to February), everything becomes cloaked in snow and the landscape changes dramatically again.

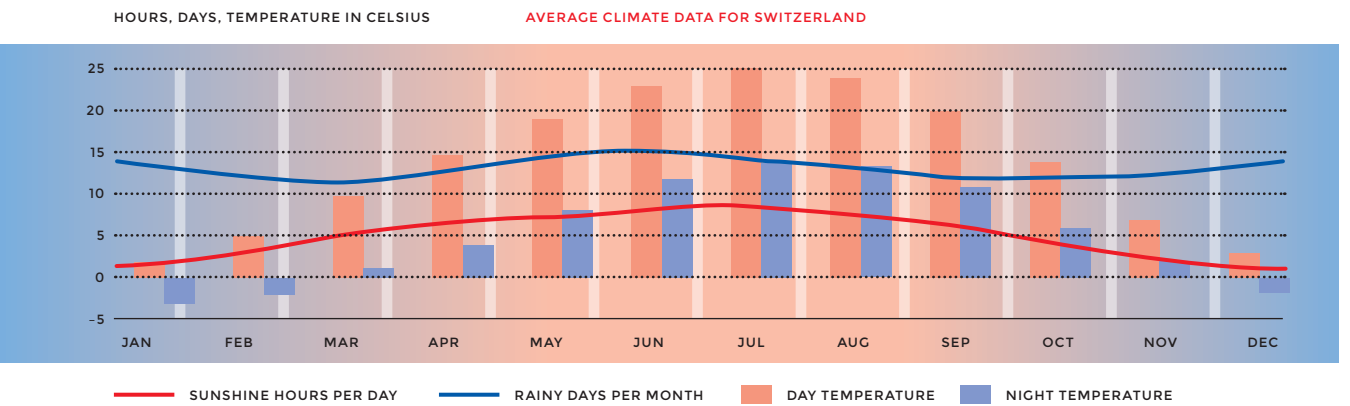
History

Archaeological evidence points to the first settlements in this area about 4,000 to 5,000 years ago. In Roman times, settlements concentrated around the lake shores and conveniently located mountain slopes. The bigger development of the region began in the Middle Ages, with Christianity gaining ground; the beautiful monastery of Einsiedeln, endowed by the German kings, being one example of that. The Middle Ages also saw the establishment of the Swiss confederation, with Canton Schwyz being one of its three original cantons.



THE SWISS KNIFE
BY VICTORINOX
VICTORINOX.COM

CITY SCHWYZ BY NIGHT



Map of Canton Schwyz

Canton Schwyz is located in central Switzerland, bordering Canton Zurich and St. Gallen to the north, Canton Zug and Lucerne to the west, Canton Uri to the south, and Canton Glarus to the East.

Distance to Zurich

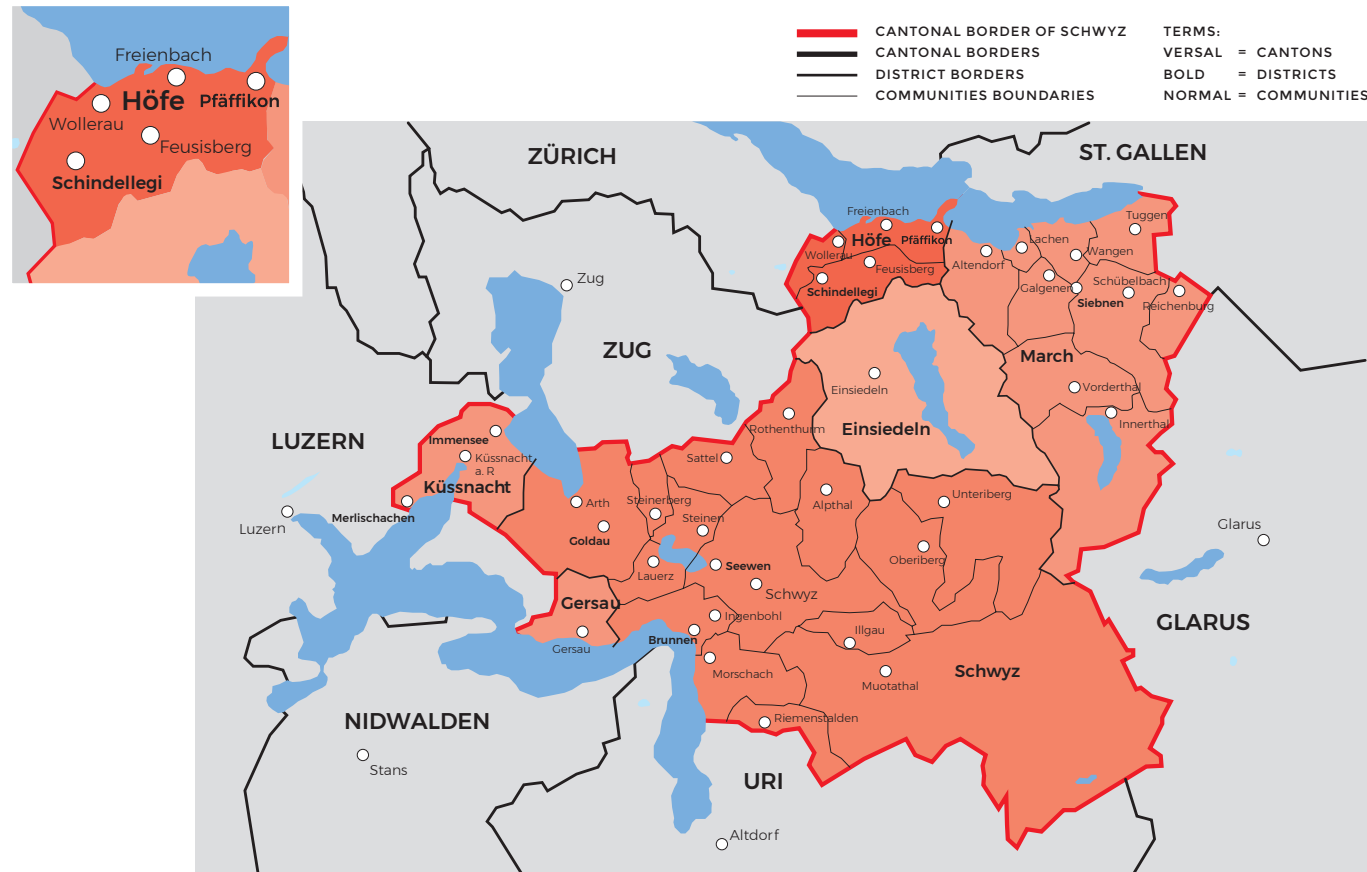
- from District Höfe 30 minutes
- from Küssnacht am Rigi 40 minutes
- from Schwyz 50 minutes

Distance to Zug

- from District Höfe 30 minutes
- from Küsnacht am Rigi 20 minutes
- from Schwyz 50 minutes

Distance to Lucerne

- from District Höfe 50 minutes
- from Küssnacht am Rigi 20 minutes
- from Schwyz 70 minutes



© by Volkswirtschaftsdepartement Kanton Schwyz

Customs, Visas and Permits

Customs Regulations

Here is some important information regarding Swiss customs. When importing goods from abroad, the customs-free limit is CHF 300 on the net value of your shopping. If it exceeds this amount then it is mandatory to pay the duty. It is forbidden to sum up the duty free amount together with other people. Further information can be found under: www.zoll.admin.ch. If you buy goods in euros and then bring your goods into Switzerland, you can get your foreign VAT refunded, make sure the sales person provides you with a form for a refund, which you can show at the border customs.

Visas and Permits

Documents

To live and work in Switzerland, you require a residency permit, issued by the local cantonal authorities. For long term assignments, it is advisable to bring important original documents with you, such as birth certificates, marriage certificates, insurance policies, medical prescriptions, employment information, academic certificates and entry permits. A number of passport size photos for the whole family are also useful.

Since some permits have to be applied for from your home country, you should start this process well in advance of your move to Switzerland. For many, the Swiss immigration laws are complex and confusing. In 2002, a new bilateral agreement between Switzerland and the EU considerably changed the laws on work and residence permits. This means that the immigration rules for the EU

and EFTA States Citizens are now easier and for non EU citizens, things have become more challenging.

EU and non-EU citizens' rights

As an EU citizen you have the right to settle in Switzerland and set up your own business, provided that you do so assuming full responsibility and at your own risk. Spouses and children under 21 may also settle and work in Switzerland as may other direct relatives. Non EU nationals can only get a Swiss work permit if their future employer proves there is no Swiss, EU or EFTA State national available to do the job. As a rule, qualified, indispensable management staff are permitted to enter the country.

Registration at the local district office

Registration needs to be completed within 14 days at the local district office as soon as you move into your house or apartment. The following documents are required when you do so:

- an employment contract
- a tenancy agreement your new apartment
- valid identity documents or passport
- a health insurance certificate (show within 3 months)
- two passport photos
- civil status documents such as a family booklet and marriage certificate, birth certificates of children

Driving Licence

It is also advisable to arrange a Swiss driving licence as soon as possible, although you have a maximum of one year in which to do so.

USEFUL LINKS

APPLY FOR A PERMIT ONLINE
ARBEITSBEWILLIGUNGEN.ZH.CH

FEDERAL OFFICE OF
IMMIGRATION, INTEGRATION
AND EMIGRATION
BFM.ADMIN.CH

VISA INFORMATION
EDA.ADMIN.CH
> ENTRY INTO SWITZERLAND
AND RESIDENT

EMBASSIES
EDA.ADMIN.CH
> REPRESENTATIONS AND
TRAVEL ADVICE

TOWNHALL
SCHWYZ

Moving to and from Switzerland

The task of moving houses may appear to be an easy project on first sight, all you need to manage is packing your belongings and loading them on to a truck, and off you go. However, anybody who has managed a move on their own will have realised that there is a little more to it than that. Especially when you are planning an international move.

In Switzerland, you will find many domestic moving specialists who offer the transport of household goods, “one man and a truck” companies. In terms of pricing, you may be surprised at how the costs vary. However, if you are planning an international move, you will want to look out for a professional company with the necessary experience, knowledge and most of all a good partner network around the globe.

Separate the apples from the oranges

Anybody who is involved with an international move will soon realise that there is much more to consider than the actual transport of your household goods. The expertise in law enforcements and customs regulations is crucial, and well-established partnerships within a network of worldwide partners are key for a successful and stress-free international move. You will also want to be sure that the company you choose has experienced and trained staff. They know the difference between packing for a domestic move, and meticulous preparation for an international move. Browse homepages, read customer reviews on Google and keep an eye out for the FAIM Certification, the highest quality certification for international moving companies – you will soon realise who the professionals are.

Because moving is personal

Planning your move is all about making choices. Obtain quotations from international moving companies, and make sure that they offer you a professional survey at your residence on site or virtually by video – free of charge. Every move tells a different story, and every person will have a different household with valuable items and furniture – no matter if the value is in terms of cost, or sentimental reasons. Be sure to point out your favourites during the survey, and mention any items that you feel are worth the extra care and might require additional or tailored packaging. An experienced surveyor will also inform you about customs regulations in your destination country, and will point out any items that might be difficult or even restricted from importing.

Eyes open for hidden charges

Based on the survey, you should receive a quotation tailored to your needs. Be sure to check the quotation for the specialities discussed during the survey! Also, when you are comparing quotations, pay close attention to the “not included” services. There could be hidden costs... for example, the port charges at destination, or the premiums for transport insurance, which can vary substantially. The bottom-line price will give you an idea for the budget, but you will definitely want to include the insurance premium for an adequate comparison.

Do not underestimate your “gut feeling”.

The actual price for your move should not be the only decision criteria for the chosen company. Listen to your inner voice, and do not forget that the company you choose will be handling your

most private life. It is not just a move of goods; it is a move of emotions! You are leaving your current comfort zone to explore a new country, new home, new work place, and a new culture. You will have all kinds of emotions to deal with, and you will be more than happy to delegate the physical move. Someone who leaves you with a trustworthy impression – for your peace of mind!

Kehrli + Oeler AG – we move lives...

Their expertise is based on a long tradition that goes back to 1904! This history of experience, combined with constant innovation, is the secret of their success. Their network of worldwide partners is handpicked, personally known, and based on long-term relationships. With Kehrli + Oeler, you can rest assured that your household goods and belongings will be moved anywhere in the world, efficiently and with the utmost care!



OVER 100 YEARS OF EXPERIENCE
IN THE MOVING BUSINESS.
ABOUT 500,000 SUCCESSFUL
MOVINGS.
Ø 4.7 TO 5 STARS ON ALL RATING
WEBSITES.

Importing

Cars

In most cases, you can import your car into Switzerland tax-free as part of your household moving goods, if you have owned/used it for the last 6 months prior to your official entry date in Switzerland. Foreign licence plates may be used for up to one year after your arrival, provided that your foreign insurance remains valid. At the time of importation, present the completed application form (18.44 Household Effects) to the customs office at the border for importation. Once the car is imported, you need to register it at your canton's driver and vehicle licensing office (Strassenverkehrsamt).

Importing from a non-EU country

If you are considering importing your car from outside the EU, it's important to get all the information first. It can be costly and complicated, and your current vehicle may need adapting for Swiss road conditions.

Importing from an EU country

If you are bringing your car from a country within EU, you can simply drive the car across borders into Switzerland. However, official car import to Switzerland involves several steps and considerable paperwork.

In both cases **Autociel** is happy to assist you as follows:

Step 1

Once you get in touch with them, they provide a quote that includes the cost of importing and registering the car under Swiss license plates.

Step 2

Once you have submitted all your details, their experts investigate further and explore whether your car is eligible for tax free import.

Step 3

Autociel orders all required paperwork for the car.

Step 4

If the car is less than 6 months old, they arrange for a reduced CO₂ fee, that benefits you further.

Step 5

With all the paperwork in order, they organise the import process.

Step 6

They help you in getting an advantageous insurance quote from their partner insurances.

Step 7

Finally, they arrange the compulsory car testing by the government, get the car registered under Swiss license plates and deliver it to you, key in hand, ready to drive.

Things to keep in mind

Right Hand Drive (RHD)

If you are moving from the UK, chances are that your car is a Right-Hand Drive (RHD). Please note that it is difficult to drive a RHD car in Switzerland and quite often the expatriates do not get used to it. If this is the case, please note, there is almost no market for a RHD car here in Switzerland. In most instances, you need to return it to the UK, in order to sell it. This is not the easiest thing! Therefore, we do not recommend to import your RHD car to Switzerland.

Insurance cover

If you qualify to import your car tax-free as a household moving good (you must have owned the car for more than 6 months), you have 12 months to register your car under Swiss license plates, after

your arrival in Switzerland. However, be careful, often the insurance company in your homeland does not cover your car in Switzerland. So, it is important for you to check with your insurance company whether they offer any cover in Switzerland once you settle in and if yes, then for how long they do so. Note that 99% of non-EU insurance companies (US, Canadian...) will refuse to cover your car in Switzerland or even in the EU. This means, it is wise to register it as soon as you arrive here.

Non-EU cars

Satellite navigation

Often the SatNav fails to work properly or not at all in Switzerland. While it is possible to update it, this can be extremely complicated and costly.

Radio frequencies

If you are importing your car from outside of Europe, chances are only 50% all radio frequencies will work in Switzerland.

Servicing and repairing

As American cars are different from those in Europe, even those manufactured by European brands, there might be difficulties in servicing and repairing them in Switzerland, as well as in reselling them. We normally recommend selling them at 20% under the market price for comparable cars in Switzerland.

Contact Autociel

Since 2002, **Autociel** is the independent car expert in Switzerland. If you need help with your car or to lease one, you may contact them directly through

jerome.chessex@autociel.ch and have a look at their website **www.autociel.ch/expat/** for more information.

Pets

Travelling with pets requires a great deal of preparation. Vaccinations, licences or other documents may be needed. Special regulations apply to travel with dogs, cats and ferrets because these pets can be affected by rabies. It is compulsory for all dogs to be registered in the ANIS database and they must be microchipped. The Animal Identity Service (ANIS) operates throughout Switzerland and provides an independent database for pets. Within 10 days of your arrival in Switzerland, dogs must be taken to a veterinary doctor. The vet takes care of registration with the ANIS (including microchip or tattoo number) and conducts a medical check-up of your pet. You will get an international health certificate verifying that they have been vaccinated against rabies. As a dog owner, you are required to register your animal(s) in your Swiss place of residence. Your dog should to be insured under your liability insurance. Check with your private insurance provider to make sure pet insurance is part of the package.

If you plan to take your pet on trips: Dogs, cats and ferrets need at least a pet passport, a microchip and a valid rabies vaccination. The exact requirements are determined by the country to which you are travelling. The conditions for re-entry must be met if you wish to return to Switzerland. Some dog breeds are not accepted in Switzerland or certain cantons. Owners should contact vet authorities in their canton for more information.



THE MOST FAMOUS DOG IN SWITZERLAND "BARRY", ACCORDING TO A LEGEND, HE HELPED TO SAVE OVER 40 HUMAN LIVES.

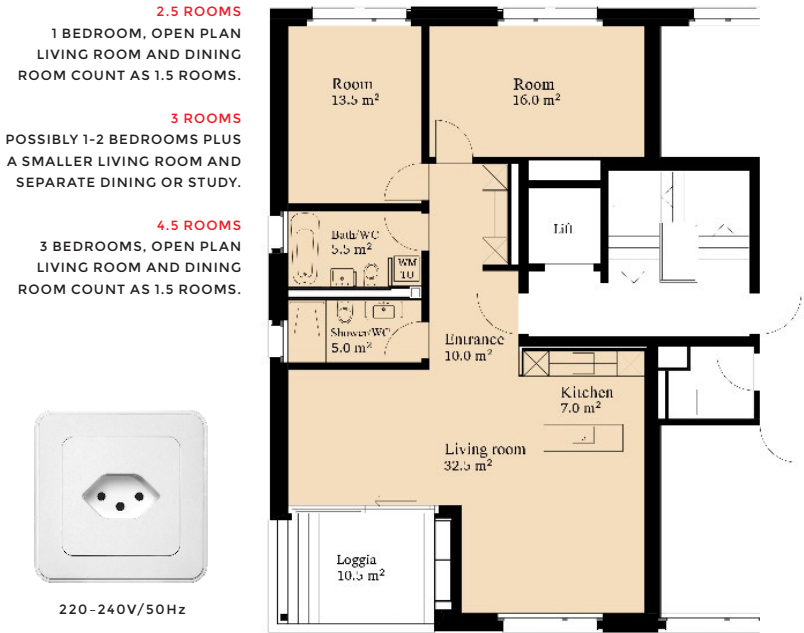


Accommodation

Accommodation in Switzerland can be hard to find and is expensive, especially when compared to other European countries’ canton. Zurich, Zug and Geneva have the highest rental prices of anywhere in Switzerland, whereas Canton Schwyz often has more reasonable pricing, combined with favourable tax. The rental system can appear complicated if you do not know it, so it is advisable to have someone at your side to inform you of the procedures and to represent you towards the local landlords and agents.

Property Size

Generally, the indicated size of the apartment or house does not include the kitchen, bathroom or dining rooms. Usually an open kitchen, dining room and living room counts as one and a half rooms.



Below you will see an example of a 3.5 room apartment, which features two bedrooms and an open plan living / dining / kitchen area, which illustrates a typical accommodation here.

Description of Housing

What you can find

Houses are hard to find, as they are in short supply; it is more common to find apartments with balconies and terraced apartments with large terraced balconies. When applying for a place, you rarely deal with the actual owner, more commonly a real estate agent will be coordinating the rental/purchase. (Expats mostly decide to rent properties first and buy later. In fact, 75% of the Swiss live in rented accommodation and are not home owners). Apartments are usually let unfurnished, but they come with complete kitchens, including a dishwasher, oven and stove. Washing machines and tumble dryers are available for common share and sometimes apartments are equipped with their own washing machines. Furnished accommodation is more difficult to find and is expensive. Properties in Switzerland never come with curtains or light fittings, which need to be purchased by the tenant. They do, however, come fitted with shutters and/or blinds.

Electricity

The electric current in Switzerland is AC 220 – 240 volts, frequency 50Hz. If you are coming from the States, you will require a step-down transformer, which can be purchased at an electrical store, but it is advisable to leave your US appliances at home and buy new ones here for safety reasons. Most sockets are for two pin plugs.

How to rent a property?

Making a good impression with the application form is essential, if you are to be in the running for getting an offer of your wished apartment. When deciding on an apartment, you will need to be quick and flexible as to when you would like to begin the lease, because if you aren't flexible, the next candidate will be.

Leases are usually open ended but one year minimum and a deposit of between one and three months' rent has to be paid into a security holding

account before you can get the keys, as does the first month's rent, so please be prepared for this. The deposit amount will be refunded back to you along with any accrued interest at the end of the rental period. The costs for possible damage in the apartment will be deducted.

Property Prices

The following table provides you with an estimation of property rental prices in different areas of Canton Schwyz.

All properties listed below are unfurnished.

City / Village	Rooms	Range	Average	PRICES LISTED ARE ALL NOTED IN SWISS FRANCS (CHF) PER MONTH AND INCLUDE 10% MONTHLY UTILITY COSTS.
Höfe	2.5	1'750 - 3'000	2'375	
	3.5	2'000 - 4'800	3'400	
	4.5	3'000 - 5'400	4'200	
	5.5	3'500 - 6'500	5'000	
Küssnacht am Rigi	2.5	1'750 - 2'750	2'250	
	3.5	2'500 - 3'500	3'000	
	4.5	3'000 - 5'000	4'000	
	5.5	4,000 - 6,000	5,000	
Einsiedeln	2.5	1'800 - 2'600	2'200	
	3.5	2'000 - 3'000	2'500	
	4.5	2'500 - 3'500	3'000	
	5.5	3'000 - 5'000	4'000	
Schwyz	3.5	2'000 - 2'800	2'400	
	4.5	2'200 - 3'800	3'000	
	5.5	2'500 - 4'500	3'500	
Houses Canton Schwyz	3.5	3'000 - 4'000	3'500	
	4.5	4'000 - 5'000	4'500	
	5.5	4'500 - 6'000	5'250	
	6.5	5'000 - 10'000	7'500	

Accommodation

General House Rules in Switzerland

Consideration

In order to establish a good consensus among all tenants, everybody is committed to mutual consideration. Every member of the household is expected to follow the house rules, which you will receive from the landlord/agency in writing.

Noise

Noise is to be avoided, especially at night. Playing musical instruments is not allowed before 8am and after 9pm. Noise should be kept to a minimum so as not to disturb others. Do not mow the lawn during lunch and dinner times as well as after 5pm on Saturdays and all day Sundays and public holidays. In some apartment blocks washing is not permitted on Sundays because of the noise created by the washing machines.

Cleanliness

Tenants are asked to keep the stairs, entrance and other common rooms free of obstacles and tidy. Unless a caretaker is in charge of the cleaning of common areas such as staircase, cellar aisles, the tenants should take care of it themselves. Each tenant should clean his/her part of the staircase (including windows). The clearing of snow is to be carried out by the tenants on a weekly basis. Tenants of garage or parking spaces are to clean the garage area and need to clear the snow to one side. Rubbish-bags are to be properly tied and put in the bins provided. Bikes, mopeds, prams and children's bicycles etc. need to be stored in the designated areas.

Common shared rooms

Unless otherwise arranged, laundry rooms and their appliances are to be used according to a schedule provided by the landlord. Each tenant is entitled to the solitary use of such rooms during the appointed times. (Usually on weekdays between 7am and 10pm) After use, the rooms and appliances are to be cleaned. The laundry should be dried in the designated areas such as laundry room, drying room or outside.

Heating

During the heating period, no heating in any room is to be turned off completely. The living room and other rooms are to be aired only briefly (10 minutes a day). Cellar and attic windows must be closed if temperatures fall to below freezing point. In apartments with floor heating only suitable carpets are to be installed, otherwise the landlord will not take responsibility for insufficient heating.

Miscellaneous

The main door of the apartment block is to remain locked after 8pm unless otherwise specified.

Security regulations displayed in the elevators are to be observed. Any operational disorders are to be reported immediately to the caretaker or landlord. The lift is to be handled with the necessary care.



SCHWYZ CITY

Sun blinds and shutters are not to remain extended during wind and heavy rain. Their permanent extension during longer periods is not permitted. Please pull them in when you go out to avoid them becoming damaged.

When barbecuing on balconies or in gardens, tenants must be considerate towards neighbours. In case of justifiable complaints, the landlord is entitled to prohibit any further barbecuing. For penthouses, the landlord may set up a separate regulation.

Shaking out and beating of containers, covers etc. from windows or balconies is to be avoided as well

as the beating of carpets before 7am and after 8pm and during lunch times as well as on Sundays and public holidays.

Satellite dishes are only permitted if authorized by the landlord.

Parking is only permitted on visitor's spaces for a limited period. Please park your car in its designated spot.

TEMPORARY LIVING

my nest

SERVICED APARTMENTS IN SWITZERLAND

NEST
HOME IS WHERE YOUR WIFI
CONNECTS AUTOMATICALLY.

mynest.ch

Furniture Rental

Pisler Furniture Rental

For more than 20 years, Pisler Furniture Rental has been providing exceptional services to expatriates coming to Switzerland. The key to their success is the awareness of the importance of their clients' expectations.

Short term rental

You have decided to move your furniture to your new place in Switzerland and your container will arrive within the next few weeks. Pisler Furniture Rental furnishes and equips your new home with light and easy to maintain furniture. You select exactly what you need and they provide the furniture and household items requested in a few hours.

You don't waste money paying for a hotel stay or time looking for an expensive furnished accommodation.

Long term rental

You prefer leaving your furniture in your country and avoid the hassle of shipping your furniture back and forth. You find your new place and Pisler help you to tailor your home down to the smallest details. Pisler Furniture Rental has solid connections with European suppliers which allows them to provide your new home with bespoke home furnishings. You have the option to select materials, fabrics, colours, sizes and shapes of furniture to ideally match your new home. Furthermore, they provide made to measure curtains.

By working closely with their customers, they meet your personal preferences which they then align to your monthly budget and desires.

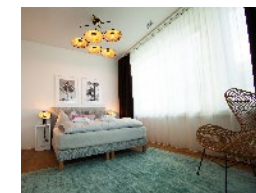
Sustainability

Pisler Furniture Rental is increasingly conscious of how the furniture they buy can impact the planet. Therefore, they select suppliers that can supply sustainable products; furniture made from recycled materials, responsibly sourced and with reusable components. In concrete terms, they buy solid wood dining tables that last forever instead of veneer that can't be repaired. They also suggest removable fabric covers for the dining chairs, the sofas and armchairs that can be cleaned and replaced if necessary. Furthermore, they propose several fabrics made from recyclable plastic bottles. And to make life easier and to increase the lifetime of the furniture, they have in their catalogue easy water cleaned, virus protected and even pet friendly fabrics for the sofas, dining chairs, armchairs and rugs.

PISLER
FURNITURE
RENTAL

YOUR CONTACT AT PISLER
FURNITURE RENTAL GMBH
ERIC PISLER
MOBILE + 41 (0)78 746 59 86
ERICPISLER@EXPAT-
FURNITURE.CH

USEFUL LINK
EXPAT-FURNITURE.CH



Cost of Living

The cost of living in Switzerland is amongst the highest in the world. On average, people spend about one third of their income on rent and about 5% on insurance.

Average monthly expenditure of an individual in Switzerland. Amount in CHF

Fixed costs:

Housing	1,000.-
Health insurance	315.-
Household contents	
private liability insurance	30.-
Internet / Mobile / Serafe	145.-
Heating / Electricity / Water	198.-
Public transport	100.-

Food, household, personal expenses:

Food	500.-
Clothes, shoes, hairdresser, leisure time	400.-
Cleaning products, personal hygiene, waste disposal	40.-

Provisions:

Dentist, doctor, optician, medicines, gifts, repairs, small purchases	200.-
---	-------

Total	2,928.-
--------------	----------------

Utility Costs

Billed by the landlord as part of the rent:

Utilities or ancillary costs refer to the actual expenditure you incur for additional costs on top of rent and can include the following: heating, water, electricity (common areas), maintenance of common areas of house, caretaker costs, gardener, lift maintenance, sewerage costs and management fees. The costs for utilities are paid on a monthly basis, together with the rent and are either settled as the same amount every month or according to use. Akonto is the difference between what you have paid in advance and the actual costs. This amount will then be refunded to you or you will be billed, if the costs are higher. Utility costs represent an average of 10% of your monthly rent.

Billed separately by the respective providers:

Electricity

Personal electricity is billed directly by the electricity company and is to be paid in addition to the utility costs unless specified differently in your rental agreement.

Telephone, Internet, TV and radio licence fee

Those are separate costs in addition to the rent.

TV / Radio Serafe

This is a radio and TV license fee for each household. All households in Switzerland must pay the fee. Each household will automatically receive an invoice from Serafe, if they have registered in the local community.



Serafe TV & Radio fee

in CHF incl. VAT

	Yearly
Private household (private)	335.-
Collective household (business)	670.-

TV / Internet and landline package

Before moving into your new apartment/house you need to ask your real estate agency or landlord what connection with which providers are possible and recommended for the particular building and area. It is recommended you compare several offerings and prices.

Welcome to Swisscom: Innovator of Trust

As soon as you arrive in Switzerland, you'll find that there's no shortage of postcards to choose from. Snow-capped mountains are followed by picturesque valleys and magnificent lakeside towns.

Welcome to the Alps

To connect this rugged country to state-of-the-art technologies, Swisscom invests heavily in modern networks and makes it a point of honor to provide the best possible service to its inhabitants, allowing optimal connection comfort over 99.9% of the territory and access to the latest innovations, while guaranteeing maximum security and protection for your data. Swisscom stays close to their customers and support them whenever they need it, their hotline is available 24/7, and their online channels are also highly developed.



SOURCE
EXPATICA.COM/CH
> SEARCH:
COST OF LIVING



USEFUL LINKS

SWISSCOM.CH

PROVIDER COMPARISON
COMPARIS.CH

TV/RADIO FEES
SERAFE.CH

Cost of Living



Aware of our country's specific administrative requirements, Swisscom has set up a special service for expatriates. So, when you settle in, you'll benefit from personalized assistance from one of their experts with extensive experience in the field. They offer you a smooth arrival, with simplified procedures and a dedicated contact who will advise you as closely as possible on your needs. He or she can work directly with you or in collaboration with your relocation agency.

At Swisscom, they offer a complete range of products and services. You'll find all the basics, including high-speed home connections and mobile connections on the 5G network. In addition, they offer an extremely popular and modern digital TV solution, with the ability to connect directly to your various streaming services.

Among the most popular are their antivirus, live sports channels, multiple SIM cards and roaming packages for comfortable travel. They do all this while remaining conscious of their impact on the environment.

They are working hard to achieve carbon neutrality. Through offsetting measures, clean energy production and the use of renewable energies. Thanks to innovative cooling systems for their central offices, they're getting there. In fact, World Finance named them the world's most sustainable company in 2022, a year in which we saved 1,590,772 tons of CO₂.

As a market leader, pioneer and innovator, they're always looking for ways to strengthen their brand. Brand Finance's global report ranked them third among the world's strongest brands.

With over 10 years' experience in the relocation business and thousands of expats they've already helped settle in, they're confident they can offer you a quality experience from the moment you arrive until you leave, where they will also take care of any cancellation fees. So when you move in, everything will already be up and running! What's more, to activate a mobile subscription, all they need is a copy of your passport or those of your family members. Plus, they will make sure you benefit from the best current promotions.

Welcome to Switzerland, welcome to your new home.

Contact them directly:
Service.expats@swisscom.com



Waste Disposal and Recycling System

Chargeable Rubbish Bags

Switzerland has one of the highest rates of waste recycling in the world. Throwing away household waste costs here in Switzerland and you must use the official refuse bags to dispose of your household rubbish (as shown in the picture below). The purchase price of these bags includes a charge that covers the waste disposal costs. You can buy your official rubbish bags at the supermarket or Post Office – you may have to ask for them separately at the till. The rubbish bags come in different sizes (17, 35, 60, 110 litres) – try out what suits you best – the normal size is 35 litres. The aim is to make you think about what you're throwing away, so fill them carefully and maximize their potential! These bags are then put into the large communal containers near homes or collected on a designated day. One 35 litre bag costs about CHF 2. So be sure to fill it completely before putting it out.

Recycling Centres

The Swiss are keen recyclers! There are several recycling centres around the Canton Schwyz where you can bring your recycling, which must be separated into paper, cardboard, plastic, glass, tins, aluminium, batteries, light bulbs, books, metal, old clothes and PET bottles to name a few. Visit the website of your municipality to find out where the nearest recycling station is located and its opening hours. The rule is that when something breaks, don't throw it away, take it to the recycling point first.

The "Brockenhaus" will also take items which you no longer require, provided that these items are in good working order and condition and can be re-sold.

Recycling- and Waste Disposal Plan

The waste disposal poster is called "Abfallplan" and can be obtained at your local Council House or "Gemeinde". It shows all of the various timetables for refuse collection and the various recycling options. Most areas have regular collections of paper and cardboard. These should be stacked neatly into 20cm bundles, and tied with string like a parcel.

Electrical appliances

Defective televisions, computers, radios, refrigerators, etc. should if possible be returned to the original supplier or taken to a shop selling new appliances. Retailers are obliged to take these appliances back free of charge. Alternatively, they may be brought to the waste collection centre.

Green/Compost Recycling

You can save all of your edible peelings in the green or compost kitchen bin provided. Usually the bin is kept under your kitchen sink – it shouldn't smell especially if you empty it regularly and always wash it out after use. You can buy biodegradable bags to line the bin from Migros or Coop if you find that more hygienic. The bin is usually emptied once a week, along with any other compost garden bins you may have.



USEFUL LINKS

"BROCKENHAUS" BRUNNEN
BROCKENHAUS-BRUNNEN.CH

"BROCKENHAUS" KÜSSNACHT
BROCKEN-HAUS.CH



CHARGEABLE WASTE BAG

RECYCLING RULES
BAFU.ADMIN.CH/ABFALL/01472/INDEX.HTML?LANG=EN



Schooling and Education



Public school vs. international school

When coming to Switzerland with school-aged children, you may be faced with a dilemma: Swiss public school or an international school? All of Switzerland's schools, both public and international, have a very good reputation. Education is one of Switzerland's major strengths and is the country's main asset to uphold its position in the top league of the scientific and economic world.

There is an excellent variety of public, semi-private, private and international schools in Switzerland.

Choosing the right school for your children requires you to be well informed, organized and open-minded. There are many important factors, which require your consideration in order to make the right decision;

- Age of your child
- Your child's personality
- Prior school experience
- Languages spoken
- How long you are planning to stay in Switzerland
- Where you are going next
- are entrance exams required
- Where do you believe / want your child's future be based
- Do you have private school tuition support

Public School System

The public schools are highly respected. 95% of Swiss parents, regardless of income or education, choose to send their children to a local school.

Class sizes are small (between 20 to 25 children). The state gymnasiums offer a rigorous programme, resulting at age 18 in a Matura or in some cases an IB (International Baccalaureate).

At first glance using the local system can seem daunting to foreigners. However, the Schwyz region welcomes international families. All newcomers to the region's schools receive free German support (DAZ = Deutsch als Zweitsprache / German as a second language) either in a special integration class or a regular class.

Schools are assigned by the authorities on the basis of the home address. If a nearby school is full or cannot offer a German integration programme, children may have to travel further. The system is very child-centred and young children up to the end of primary (age 12) attend school every morning and one to three afternoons a week. Wednesday afternoon is left free for the children to pursue their interests e.g., a sports team, playing a musical instrument. However, for working parents many schools now offer a "Tagesstruktur" (after-school programme) and "Mittagstisch" (lunch time supervision). These programmes are reasonably priced but often oversubscribed. Their alternatives are a "Tagesmutter" (nanny) or a "Kinderkrippe" (daycare).

Switzerland has no federal education authority or national curriculum. This can make moving between different cantons with children a frustrating experience, not only with regard to the language of instruction.

Depending on the canton, the main language spoken in the classroom is German (as it is in Canton Schwyz), French or Italian. Traditionally, the second language would be one of the remaining two official languages of Switzerland. In recent years, however, there has been a trend towards teaching English as the first foreign language at school.

Public schools include 2 years kindergarten, 6 years primary and 3 years secondary school followed by the highly respected apprenticeship system or 4 years gymnasium (6 years if already started after primary school). Gymnasium students leaving with the Matura have a high level in their languages and maths. The Matura is becoming an increasingly portable qualification, recognized as valuable by universities such as Oxford and Cambridge in Great Britain as well as the MIT in the United States.

The school year in Switzerland runs from mid August until the beginning of July. Private international schools operate from the end of August to the end of June.

Child Care

Should you have little children and seek a child-care option, then there are a number of different day-care centres available. From English speaking day centres to German or even bilingual establishments. We can provide more details on request.

Private Schools

While local schools offer an excellent level of education and one of the best routes to long-term integration, they are not for everyone. We are

fortunate in Canton Schwyz to have a selection of private schooling solutions with excellent curricula. For mobile families intending only a short-term stay in Schwyz, the bilingual SIS International School in Pfäffikon may be a solution. In close proximity, private schools in Canton Zurich and Zug offer even more options.

Private Schools in Canton Schwyz

SIS International School, Pfäffikon
🌐 swissinternationalschool.ch
bilingual

OBS Obersee Bilingual School, Pfäffikon
🌐 oberseebilingualschool.ch

Reachable private Schools in Canton Zurich

ZIS - Zurich International School
🌐 zis.ch
English

SIS International School
🌐 swissinternationalschool.ch
bilingual

D'Inle Montessori-Schule
🌐 dinsle.ch
bilingual

Lakeside School Horgen
🌐 lakesideschool.ch
bilingual



Schooling and Education

Freies Gymnasium Zurich

🌐 fgz.ch

bilingual

Double Decker

🌐 doubledecker.ch

bilingual

... and Canton Zug

International School of Zug and Luzern - ISZL

🌐 iszl.ch

English

International School of Central Switzerland - ISOCS

🌐 isocs.ch

English

Education-Stepping Stones

🌐 steppingstones.ch

English

Institut Montana Zugerberg

🌐 montana-zug.ch

bilingual

SIS International School

Rotkreuz-Zug

🌐 swissinternationalschool.ch

bilingual

Four-Forest Bilingual

International School

🌐 four-forestschool.ch

bilingual

Language Schools

If you would like to learn some German, improve your English or learn any other new languages whilst in Switzerland, here is a list of possible language schools. Check out their websites and then choose one that fits your needs.

Schwyz

Alphabet Street, Brunnen

🌐 alphabetstreet.ch

Languages Today, Küsnacht am Rigi

🌐 languages-today.weebly.com

Zurichsee International Language

Studio, Wollerau

🌐 muttersprache-studio.com

Deutsch Lernen in der Gemeinde,

learn German in your local

community. Check with your

Gemeinde for courses and places.

Zürich

plc group

🌐 languagecentre.ch

Bénédict

🌐 benedict.ch

Alpha Sprachstudio

🌐 alphasprachstudio.ch

Berlitz

🌐 berlitz.ch

Klubschule Migros Zurich

🌐 klubschule.ch

Bellingua

🌐 bellingua.ch

Inlingua

🌐 inlingua.ch

Sprachschule Schneider

🌐 sprachschuleschneider.ch

Zug

academia

🌐 academia-zug.ch

Berlitz

🌐 berlitz.ch

Klubschule Migros Zug

🌐 klubschule.ch

Till Sprachschule Zug

🌐 till-sprachen.ch

Lucerne

Alemania

🌐 alemania.ch

Berlitz

🌐 berlitz.ch

Klubschule Migros Luzern

🌐 klubschule.ch

academia

🌐 academia-zug.ch

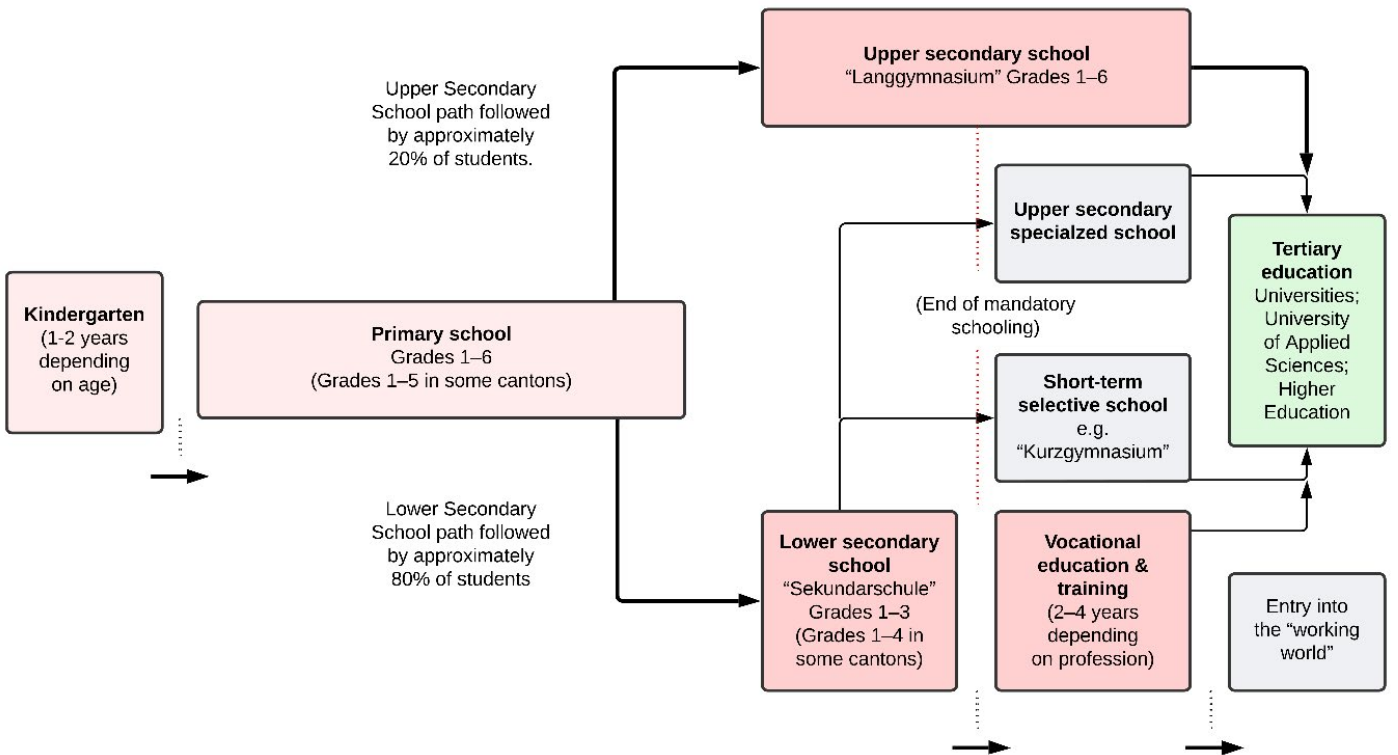
Bénédict

🌐 benedict.ch



Swiss Education System

USEFUL LINK
EDK.CH/EN/EDUCATION-SYSTEM-CH



Special needs education

These children and young people benefit from special measures for their education (from birth to their 20th birthday). They have a right to special schooling and support from specialists in early

childhood special needs education, scholastic special needs education, language therapy or psychomotor therapy.

Switzerland is well known for its thriving banking and financial sector. As a leader in banking services, you can be sure to get excellent banking service whilst living here in Switzerland. Above all, the banking system scores extremely well on security and efficiency. Bank clients are offered services tailored to meet their particular requirements, be it simply opening a bank account with credit and debit cards and e-banking or more sophisticated investment advice. The key to choosing a good bank is to match offerings and client relationship personnel to your own banking needs.

Opening a bank account First of all, you don't need to worry about the language barrier when applying to open a bank account in Switzerland: front-office employees in most major Swiss banks speak English and a few of them even have English versions of their brochures, such as UBS.

Therefore Prime Relocation and UBS are pleased to offer you a comprehensive package of services and financial solutions at preferential terms and conditions.

Opening an account in Switzerland, or anywhere in the world, for that matter, is subject to various regulations, so the first thing you need to know is that the application process can vary depending on your nationality and place of residence. But for your application, there are three things you will need regardless:

- An ID card or passport
- A valid Swiss residence and work permit (or a residence permit plus a Swiss employment contract)
- Yourself

The last point is as important as the first two, because you cannot open a bank account over the phone or send your partner or even your lawyer to

open one for you. Swiss laws require banks to verify a potential client's source of income and confirm his or her identity. At UBS, however, you also have the option of opening an account digitally via the UBS Banking App. You can download the "UBS & UBS key4" app for a digital experience. You will then be guided through the account opening process in just a few steps.

Debit cards (Debit Mastercard or Visa Debit) Cheque books are not used in Switzerland. The most common card in Switzerland is the debit card linked to your bank account; simply type in your PIN code and authorise the transaction in any shop both in Switzerland and across the borders worldwide. However for foreign payments/transactions we recommend credit cards. For sums lower than CHF 80 you don't even need a PIN.

Credit cards (Mastercard or Visa) Buy now – pay later. An application form usually requires details of the applicant's salary to receive a credit card with a given limit. With the contactless payment function, it is very convenient to use a credit card even for small amounts – sums lower than CHF 80 don't even need your PIN or signature. This card offers better exchange rates abroad or in foreign currency (especially with key4 card).

Paying bills Pay your bills with payment slips or "Einzahlungsscheine". You can easily pay your bills in your digital banking on the computer or on the phone by simply scanning the QR-Code. Alternatively, you may prefer to pay regular monthly bills by standing order or direct debit. The new QR-bills can easily be paid, by UBS e- or mobilebanking.

Exclusively for UBS Relocation Clients

They speak your language and dedicate themselves to support you in every aspect of banking:

- Pay and Save – Everything you need for your daily banking
- Online Service – 24 / 7 access to your banking with the device of your choice
- Pension – Optimizing your taxes and saving for retirement
- Financing – Advising on and financing your dream-property
- Investments – Optimizing your assets and generating returns

UBS offers you a Banking Package that has everything you need for your daily banking business. The first six months they even offer the whole bundle of banking products for you free of charge. The Package includes a savings and personal account, a UBS Debit Card, UBS Credit Cards (in various currencies), UBS e-banking and the UBS Mobile Banking app. Whether it is asset, account or card information, payments, securities trading, notifications or changes of address, UBS e-banking and the UBS Mobile Banking App make all your banking transactions simple and convenient. UBS also offers you banking solutions for your children, which are free of charge.

For receiving the cost saving benefits for relocation customers, for scheduling an appointment and for further information about account opening and benefit services from UBS please contact the following shared UBS-mailbox:

relocation@ubs.com

Banking Hours

Typical banking hours are 9am to 12 noon and 2pm to 5pm although many banks in the centre of town stay open over lunchtime. Banks are closed on Saturdays and Sundays and bank holidays.

American Citizens

American and green card holding clients are required by the US Government to observe special regulations in all banking business while residing in Switzerland. Please ask your bank advisor to direct you to the proper member of the bank team authorised to work with such cases.

Currency

The currency is Swiss franc, CHF. The Swiss franc comes in the following denominations: Coins: 5, 10, 20, 50 (Rappen) and 1, 2, 5 francs. Notes: 10, 20, 50, 100, 200 and 1000 francs.

Choosing a Bank – Main Bank

UBS – is the market leader in retail and commercial banking in Switzerland.

YOUR CONTACT AT UBS

MICHAEL CHRISTEN
LEITER GESCHÄFTSSTELLE
SCHWYZ
OBERER STEISTEG 20
6430 SCHWYZ
TEL. +41-41-819 52 02
MICHAEL.CHRISTEN@UBS.COM

UBS.COM
RELOCATION@UBS.COM



Insurance



Your Swiss Insurer

LINK
HELVETIA.CH

Helvetia explains which insurances are compulsory and which are optional but strongly recommended in their respective segments: general insurance and health/accident insurance. Switzerland is an expensive country; make sure you have the appropriate cover.

Compulsory insurance: Basic health, accident, motor vehicle and social security insurance.

Optional insurance, that everyone should have: Personal liability insurance

This is one of the most important types of insurances to have. It protects you and your family against major financial consequences if you cause damage to other people or their property. If you scratch the parquet floor of your rented apartment. If you collide with and injure another person while on your bicycle or skiing or if you spill wine on your friends' sofa or your children break the neighbour's window while playing football. The cover is worldwide.

Household contents insurance

Whether it be water damage, a fire in the home or a break-in – household contents insurance covers you for the loss incurred. Worldwide cover also applies to stolen items outside your home, such as your mobile phone, bike or watch.

Accident insurance

All employees are covered by accident insurance which is provided by the employer by law. Should family members not be employed they must be covered separately through private insurance. This can be included as part of the health insurance.

Social insurance – the 3-pillar principle

The purpose of the Swiss pension system with its three pillars is to ensure financial security for people in Switzerland in their old age or in the event of disability. In addition, dependents are covered in the event of death. In Switzerland, provision for retirement is based on three pillars which complement each other:

1st pillar: state provision: old age and survivors' insurance (OASI) – Swiss people usually refer to it by its German abbreviation AHV.

2nd pillar: occupational pension scheme organized by your employer (LOB), also referred to as "pension funds".

3rd pillar: voluntary private pension provision. In the third pillar, the investments are in your name and this provision is voluntary. It is used to cover gaps for old-age provision, risk protection or simply to optimize taxes.

Basic and Supplementary Healthcare Insurance: Mandatory Healthcare Insurance (KVG)

Swiss residents must have mandatory healthcare insurance (basic insurance) with a Swiss health insurer, unless they work for a foreign employer or receive a pension abroad. Their health insurance will cover them against the financial risks of illness, maternity and, depending on their work situation, also against accident.

Benefits

- Outpatient medical treatment
- Medicines in accordance with statutory lists of medicines if prescribed by a doctor (within the indication)
- Hospital treatment in the general ward in line with the base rate in the canton of residence or

hospital treatment in the general ward of hospitals in the directories of the canton of residence

- Abroad: Emergency treatment at up to twice the rate of the canton of residence or as per bilateral agreements with EU and EFTA countries

Supplementary Insurance under the Insurance Contract Act (VVG)

With supplementary insurance you can extend your cover to suit your needs and receive attractive contributions towards health promotion and preventive healthcare.

Benefits

- Medication not covered by mandatory health insurance if prescribed by a doctor (within the indication)
- Complementary medical benefits
- Vaccinations, medical check-ups, health promotion
- Dental/orthodontic treatment
- Emergency treatment abroad including return transport to Switzerland
- Emergency transport
- Elective outpatient treatment worldwide
- Private room, two-bed room or multi-bed room worldwide
- Free choice of doctor/hospital worldwide

Helvetia expat services

Specialized consultants with good English knowledge. Many years of experience within the expats segment. 24/7 support in case of claims. Excellent customer rating.

Feel free to contact them: prime@helvetia.ch





JEANNINE TOBLER
IMMIGRATION MANAGER
JEANNINE.TOBLER@BDO.CH
+41 44 444 37 25



JANINE BIENZ
GLOBAL EMPLOYER SERVICES
TAX DIRECTOR
JANINE.BIENZ@BDO.CH
+41 44 444 36 37



MYRIAM MINNIG
LEAD COMPETENCE CENTER
SOSEC
MYRIAM.MINNIG@BDO.CH
+41 41 368 13 68



CHRISTA KALBERMATTEN
LEAD COMPETENCE CENTER
EMPLOYMENT LAW
CHRISTA.KALBERMATTEN@BDO.CH
+41 41 368 12 96



DANIELA KÄPPELI
LEAD PAYROLL SERVICES BSO
DANIELA.KAEPPELI@BDO.CH
+41 44 444 58 97

Legal, Tax and Compliance



Working in Switzerland – Know your compliance responsibilities.

Immigration

Depending on your situation, you may need to secure a work permit, demonstrate financial stability, or familiarize yourself with the different permit categories, and the requirements associated with each, to ensure a successful relocation. One of BDO's core competencies is the assistance in immigration topics. They can assist you with the granting or extension of your work permit. Their specialists are there to help and answer your questions.

Taxation

Switzerland's tax system is known for its favorable rates and financial stability. Learn about the different types of taxes (ordinary taxes, payroll taxes, capital gain taxes on the sale of a property, etc.), deductions and filing obligations based on your residency status and personal situation. The most important part in understanding the Swiss tax system is always to understand your tax residency position, as from there your tax filing obligations are determined. The BDO tax teams are happy to guide you through all such topics and take away the burden of doing the paperwork yourself.

Social Security

In Switzerland, we have an exceptionally complex social security system with different levels of coverage in the event of illness, accident and family obligations – as well as disability and old age in the long term.

Make yourself familiar with mandatory and voluntary options. We recommend that you understand the social security system, including pension plans and other benefits to secure well-being for you and your family. BDO is keen to give you an overview and advise you on solutions that are optimally tailored to your needs.

Employment Law

Being an employee of a Swiss based company or thinking about working for a foreign based employer while living and working in Switzerland could lead to various legal topics which should be considered. Swiss employment law includes a range of regulations and legal provisions that govern the relationship between employers and employees. These laws are designed to protect the rights and interests of both parties, ensuring fair treatment, safe working conditions and appropriate compensation. BDO's legal advisors would be pleased to assist in your knowledge and understanding.

Payroll

Managing payroll and understanding social benefits are crucial aspects of working in Switzerland. Payroll is not only the transferring of funds to a bank account on time, but also complying with salary structures and withholding tax deadlines along with social contributions. The payroll specialists of BDO will make sure that employers are compliant and can support using digital HR processes.

Medical

In general

No vaccinations are required to enter Switzerland. It is however important to bring any previous medical certificates or records with you from your home country. Swiss medical facilities are among the best in the world and of a very high standard. However, health care is expensive and it is recommended that you obtain adequate health insurance soon after arrival.

Doctors

Once here, you should set up a general practitioner (Hausarzt) to refer to in case of illness – it is simply a matter of going along and trying them out until you find one that suits you best. The general practitioner will then refer you to a specialist or hospital if needed. Generally, it is common to have a separate doctor for children, a paediatrician who is specialized in treating children and women usually need to locate a gynaecologist for an annual check-up.

Listing of all doctors and dentists in Switzerland.

🌐 doctor.ch

Pharmacies

Pharmacies in Switzerland are marked with the green pharmacy sign. In every neighbourhood you will find pharmacies. They are generally open from 8:00-18:30 (Monday to Friday) and 8:00-16:00/17:00 (Saturday). Swiss supermarkets do not sell any medications. For over-the-counter medications, such as painkillers and cough syrups, you need to go to a pharmacy.

Some pharmacies (often in train stations and airports) are open longer and on Sunday.



REGA
"SCHWEIZERISCHE
RETTUNGSFLUGWACHT"
ONE OF THE AIRBUS
HELICOPTERS



MEDICAL EMERGENCY NUMBERS:

AMBULANCE:	144
FIRE FIGHTERS:	118
POLICE:	117
POISONS INFORMATION:	145
REGA (AIR RESCUE):	1414

Hospitals

Spital Einsiedeln

Spitalstrasse 28
8840 Einsiedeln
Tel: 055 418 51 11
🌐 spital-einsiedeln.ch
Emergency: 0844 22 40 44

Spital Schwyz

Waldeggstrasse 10
6430 Schwyz
Tel: 041 818 41 11

Spital Lachen

Oberdorfstrasse 41
8853 Lachen
Tel: 055 451 31 11

Kinderspital (Children's Hospital) Lucerne

6000 Luzern 16
Tel: 041 205 11 11
Emergency: 041 205 31 66

Kinderspital (Children's Hospital) Zurich

Steinwiesstrasse 75
8032 Zurich
Tel: 044 266 71 11

Universitätsspital Zurich

Rämistrasse 100
8091 Zurich
🌐 usz.ch

Klinik Hirslanden

Zurich
🌐 hirslanden.ch

USEFUL LINKS

PHARMACY
ACHILLEA.CH



Post Office



POST.CH



THE OLD SWISS POST STAMP "BASLERDYBLI" FROM 1845 IS WORTH ABOUT 100,000.-

HOW TO SEND MAIL



Switzerland has a very efficient postal system. Opening hours of your local post office vary according to branch, but generally they are closed from 12pm to 2pm for lunch and at 11am on Saturdays. Post offices in city centres are usually open during lunch time.

Post offices offer a diverse selection of things to buy including stationary, magazines, confectionery, mobile phones and gift cards for all kinds of shops and institutions.

Parcel Collection Notice

Should you receive a parcel and not be at home, the postman will put a yellow slip of paper in your letterbox and ask you to go and collect it from your post office (always take proof of identification with you). As a rule, the post will keep the parcel for a week and then return it to the sender if you do not pick it up in time.

Mail in Switzerland is sent by either A or B post. With A post, delivery is promised for the next day or B post within 2-3 working days.

Swisspost App

Write: TIMBRE and send SMS to 414. Receive one time code to write on your letter then post.

Postage for standard letters (CHF)

25 x 17.6 x 2cm and up to 20g is as follows:

	A	B
Switzerland	1.20	1.00
Europe	1.80	-
Overseas	2.30	-

Change of Address

When you move you have to inform the post office who will forward your mail to your new address within Switzerland. You may do so at the counter or online under post.ch.

Temporary Mail Stop

Should you be planning to go away for a short break, you can get your post forwarded to your holiday address or cancel the post for a week or two for holidays and get it sent to you in your letterbox on your return. Fill out a form at the post office or do it online. This saves the rather small letter boxes from overflowing.

Post Finance

You can open a "Postscheckkonto" at your local post office. This enables you to pay your bills as well as make cash withdrawals using the postfinance card. You may also make payments in many shops using this card - similar to an EC card from other banks.

postfinance.ch



Public Transport

Public transport in Switzerland is extremely efficient and runs very smoothly - everything is timed to perfection. Lots of places can be reached through a network of trains, buses, boats and cable cars. Buses play an important role too - the Swiss "Postbus" links smaller more remote villages with the nearest train station. Swiss railways, the SBB, have a great website and APP which will help you when you plan a journey www.sbb.ch - this gives you access to timetables of the trains, boats and buses which enables you to plan a journey from Zürich to Rome and shows all of the train changes necessary plus platform details.

Useful public transport apps

- SBB Mobile
- Moovit
- FAIRTIQ (Begin and end your journey in the app that's it! No more tariff zone chaos)

Tickets and season tickets

If you want to use the train, you must buy a ticket before the journey. Tickets cannot be bought on the train. This is regulated differently on buses. There are ticket machines at every railway station and at most bus stops, and in larger stations there are also staffed ticket offices. Tickets can also be bought online or by mobile phone. For people who travel a lot, there are various season tickets. These are available for individual routes, individual areas or the entire Swiss transport network (general season ticket).



TARIFVERBUND SCHWYZ
HERE YOU WILL FIND
EVERYTHING ABOUT PRICES
AND TICKETS.
TVSZ.CH

Various Abonnements

Children under six years of age travel free. Purchase a junior card or "Juniorkarte" for 6-16 year olds who can then travel for free if accompanied by a parent - it costs approx. CHF 30 and lasts for a year. The third child receives his/her card free when you buy cards for the first two kids!

SwissPass

The SwissPass is more than just a Half-Fare travelcard or GA travelcard as it offers you access to partner services from Mobility Carsharing, PubliBike, SwissMobile and ski resorts. Thanks to the SwissPass you no longer have to think about renewing your travel card and so you automatically stay mobile. Your SwissPass Card is valid for several years and will be automatically renewed. SBB reminds you of the optional cancellation deadline in good time prior to the automatic travelcard renewal.

Half-Fare travelcard

It is advisable for adults to buy the Half-Fare travel card or "Halbtax" to get a reduced fee for train and bus travel and is also valid for certain mountain cable cars and trains. It costs CHF 185 (in the first year) and CHF 165 in the following years.



SBB RAILWAY WAGON WITH
CHILDREN'S PLAYGROUND

USEFUL LINKS

TVSZ.CH
ZVV.CH
ZVB.CH
SBB.CH
POSTAUTO.CH
RIGI.CH

GROSSER MYTHEN
TOWN OF SCHWYZ'S LOCAL
MOUNTAIN WITH A SMALL
RESTAURANT AT THE TOP.

GA travelcard (General Abonnement)

A GA Travelcard covers all public transport in Switzerland. It costs for an adult in second class CHF 4,080 for one year. Various partner and family price reductions are offered.

One day GA ticket

If you are planning a longer trip within Switzerland, you can buy a day pass (Gemeindetageskarte) at a reduced price in many municipalities. The offer is limited, you have to reserve the ticket early enough. Information on this is available from the municipal administrations.

Further information

Dogs and cats travel free if you carry them in a basket, otherwise you must purchase a half price ticket for them. If you want to take a bicycle on the train or bus, you need a special ticket for it. It is not always possible to take a bicycle everywhere. Sometimes a reservation on the train must be done in advance. It is easy to travel with push chairs and you can just wheel your pram on. Choose the carriages with the pram sign and it is usually possible to lift the first set of seats and fit the buggy in.



VINTAGE POSTER OF
THE RIGI RAILWAY

Canton

Zug – Zugerpass

If you use public transport every day, it is possible to buy a ticket for the whole of

Canton Zug called the “Zuger Pass Plus”. It covers all zones and allows you to have unlimited access to Zug’s public transport network. Please ask at the counter in the train station or check at

🌐 tarifverbund-zug.ch

It is possible to buy a card for several journeys or “Mehrfahrtenkarte” should you always use the same number of zones or journey at a cheaper price than paying for the trip every time – ask at the counter and with this option you receive one journey for free.

Canton Lucerne – Passepartout tariff association

Within the canton of Lucerne, the Passepartout tariff association offers special fares for tickets, season tickets and day passes. The area is divided into several zones. The tickets or season tickets are valid on trains or buses within the zones purchased. Anyone travelling outside the area needs a separate ticket.

Night fee

All connections after 1:00 am (Zürich–Zug–Lucerne) are subject to an additional night surcharge of CHF 5. This is based on the train departure times from Zürich HB (main railway station) or Lucerne.

Driving

Under Swiss law you need to carry a few things with you in your car at all times:

- a red breakdown triangle and bright yellow vest
- your driver’s licence
- the vehicle’s registration papers
- the car’s exhaust test certificate
- insurance documents
- plus a European Accident Report to be filled out in case you have an accident, supplied by your insurance company.

If not regulated otherwise by traffic signs, priority to the right applies. buses, trams, ambulance and police cars always have priority! If you have or cause an accident because you didn’t give way to cars coming from the right, you will be liable.

When driving uphill, the car driving UP has priority, so if you meet a car and you cannot pass, the one descending the hill should back up.

Driver’s licence

Your foreign driving licence is valid for one year. After that, you are required to have a Swiss licence. You need to exchange your foreign licence for a Swiss licence; this is still possible after the 12-month grace period, but you may have to pay a fine. The procedures vary depending on which country issued the foreign licence. In any case, you must produce the original driving licence and take an eye test. For more information about your specific situation, contact your canton’s driver and vehicle licensing office (Strassenverkehrsamt).

Traffic rules are very important to drivers in Switzerland. The fines are very high compared to

other countries. Serious violations of the rules can result in the revocation of the driver’s licence.

Some important rules:

Maximum speed in towns	50 km/h
outside towns	80 km/h
motorway	120 km/h

It is possible to **pass on the right**, left, or middle lane in the event of a traffic jam, slow-moving column traffic, or an accident. However, this should not be confused with **overtaking** on the right, as such overtaking maneuvers remain prohibited.

Lights must also be switched on during the day. All persons in a car must wear a **seat belt**. Children must be seated in a **child seat** (up to 12 years or a height of 150 centimetres).

While driving, **telephoning** is only permitted with a hands-free system Driving under the influence of **alcohol or drugs** is a punishable offence (blood alcohol limit 0.5mg / L blood-alcohol level) Pedestrians on the **pedestrian crossing** always have the right of way (except when crossing is regulated by traffic lights).

Speeding cameras are prevalent throughout Switzerland. There are set fines for low over speeding, and percentage fines on your gross income on high over speeding.

Winter

It is highly recommended to use winter tyres to cope with the wintry conditions we enjoy in Switzerland. Aim to change your tyres from summer to winter around mid-October and back again to summer tyres around April. You will be liable if you have an accident in wintry conditions and you haven’t



CAR SHARING
MOBILITY.CH

ROAD TRAFFIC OFFICE
SCHWYZ



Driving



got the correct tyres. If you are driving to the mountains, it is advisable to carry snow chains in the vehicle, unless you have a four-wheel drive. Those can be rented or purchased. Chains are relatively inexpensive but are invaluable if you are caught in bad weather. Before the trip, read the instructions and do a trial run of putting them on. Keep a pair of gloves with the chains; hands get cold very quickly. You may want to join the TCS or “Touring Club Suisse” which is the Swiss rescue service for breakdowns. Membership isn’t expensive and it may well be worth it – see their website on tcs.ch.

Motorway tax / Road Tolls

Roads are financed by the federal government, cantons and municipalities. The use of roads is free of charge. The motorways are an exception: If you want to use the motorways, you have to buy a vignette every year. This is stuck to the windscreen and costs CHF 40. Buy your new one by the end of January each year. It is available at petrol stations, post offices, and at custom offices at the border. You can also get it online – (e-vignette) via: e-vignette.ch.

What to do if you have an accident

If you are involved in a minor accident where police assistance is not needed, note the registration numbers, names and addresses of all parties and witnesses. Complete the European Accident Report, have it signed and send it to the insurance company even if it was not your fault. It is advisable to report any minor accident to the police within 24 hrs to avoid any repercussions or problems with your insurance claim later on. If you witness an accident you must stop by law, offer assistance and provide evidence. Call the police 117 and the ambulance 144 if needed.

Parking

Only park where you are allowed in clearly marked areas. Official parking places in Switzerland are all marked and in most cases chargeable. Do not renew your time in the same parking space, as you will risk getting a fine. Marked areas may be white, blue or yellow. White is free, yellow is private and blue is for parking with a parking disc. To park in a blue area, set your parking disc to your arrival time and check how long you can stay – usually it is 1 hour for free.

Finding a used / new car?

As an expatriate, your requirements may differ from the ones of a regular car buyer in Switzerland. Autociel, they understand that completely. Instead of selling you a particular brand or model of car, they focus on understanding your requirements and finding you the car you need. So, whether or not you have a clear idea about your dream car, their experts offer friendly consultation on which car will serve you and your family the best. With a huge range of brands and models on offer, they get your dream car in a completely hassle-free manner.

Leasing a car

Leasing a car in Switzerland as an expat can be a complicated process. However, paying a hefty down payment and sky-high credit rates are not your only options. Autociel, they ensure that you get to lease a car at a reasonable price and contract terms. Thanks to their extensive experience of working with expats, they can offer you a hassle-free car leasing service if you have a valid work permit even with an L residency permit.

autociel.ch/expat



Komoot

The bike and hike tour planner for Switzerland.

komoot.com

Bicycles

A well-developed network of cycle paths makes cycling in Canton Zug and Lucerne very pleasant. Many working people use the bicycle to get to work. There are special hiking trails for pedestrians or hikers. Bikes may be rented at main railway stations or bike shops.

Rules for cyclists

To ride a bicycle in Switzerland, you do not need a special pass or a test. In general, the same traffic rules apply as for car drivers. If there are special cycle paths or lanes, these must be used. The bicycle must be roadworthy (two good brakes, bell, reflectors front and rear and on pedals, lights front and rear). There is no obligation to wear a helmet, but a helmet is recommended. Cyclists should in any case take out personal liability insurance, as they are liable for damage (to persons or objects).



BICYCLES TO RENT
AT THE SBB STATION
SBB.CH



ANNUAL GENEVA
INTERNATIONAL MOTOR SHOW
AT PALEXPO.



THE PARKING DISC YOU WILL
NEED A LOT IN THE CITY, FOR
THE BLUE PARKING ZONE.



Shopping



CUSTOMER CARDS
FROM THE TWO
LARGEST RETAILERS
COOP AND MIGROS.

USEFUL LINKS

JUCKERFARM.CH
LIDL.CH
ALDI.CH
DENNER.CH
GALAXUS.CH
COOP.CH
MIGROS.CH



Shopping in Switzerland is considered to be more expensive than in other European countries and restricted in choice. However, there is now a great variety of supermarkets (the largest being Migros and Coop and the smaller, cheaper ones are Lidl, Aldi, Denner) that offer fresh local products. All of your other shopping requirements will be met quite easily in your high-street. Switzerland does not have a great culture of “mall” shopping which you may be used to at home, but there are a few larger shopping centres that are well worth a visit.

Supermarkets

Opening hours are more restricted here than in either the UK or US. Smaller supermarkets in villages close for the lunch period. On Saturdays, all the shops in Schwyz close at 5pm and in the smaller villages at 4pm. In Zurich, the shops stay open longer – until 7 or 8pm in the main shopping districts. In Lucerne, the shops close at 6pm and at 4pm on Saturdays. Supermarkets are generally open from 8am till 7pm daily.

The two main supermarket chains are “Migros” and “Coop”. Migros mostly sell their own branded food and don’t sell alcohol or tobacco, which Coop does! Both stores offer loyalty cards – Migros has the “Cumulus Karte” (cumulus card) and Coop the “Supercard” which are well worth having. With the cumulus card you are awarded vouchers which you can then use as cash to pay in the shop and with the Supercard from Coop you can shop at Coop City and pay with your points or choose something from their catalogue or even turn your points into air miles. Application forms are available from the customers service desks.

Online Shopping

Migros and Coop both offer an online shopping and home delivery service.

See coop.ch and shop.migros.ch.

Should you run out of something out of shopping hours try:

- petrol stations, mostly open 7 days a week
- Railway station shops
- Zurich airport shops

Organic Food

Organic food in Switzerland is called “Bio” There are specialized shops selling Bio products but farm shops often sell them too. “Reformhaus” is the major organic food store. The farm shops are also well worth a visit and are found everywhere.

Speciality foods can be bought in the gourmet shops like Globus and Jelmoli. There are also a number of ethnic shops available.

Clothes Shopping

Generally the shops in the high street are open from 9am till 7pm. Late-night shopping in Zurich, Zug and Lucerne is on Thursdays – until 9pm. Schwyz has a good selection of shops, but is smaller than either Zurich or Lucerne – so if you feel in need of more variety then head to Zurich or Lucerne. The biggest and finest department stores in Zurich are “Globus” and “Jelmoli”, where you will find a good selection of everything. “Manor” is also a large department store. For clothes also try “Schild”, “Feldpausch” and “Esprit”.

Shopping Centres

There are bigger shopping centres around, which may just be a short train ride or car journey away. The largest shopping centres in Central Switzerland are:

Mythen Centre Schwyz It offers 56 different stores, free parking and a children paradise with child care for a stress free shopping experience.

Seedamm Centre Pfäffikon

With 47 different stores and free parking, it offers local communities all the typical shopping possibilities, including Manor, Migros and Coop.

Emmen Centre Lucerne

Manor, FLY, clothes, shoe shops and others.

Wohncentre Emmen Lucerne

Go here for furniture.

Shoppi Tivoli Spreitenbach

Here is a large variety of everything here, including furniture.

Sihltal Einkaufszentrum Sihlcity Zurich

This is a nice shopping centre which houses everything.

PilatusMarkt Kriens Lucerne

This is a very nice new shopping centre on the other side of Lucerne.

Einkaufszentrum Glatt Wallisellen

Located on the motorway just past Zurich and close to the airport – shop here from 9am to 8pm.

Markets

There are a number of local markets that are well worth visiting if you enjoy fresh, local produce or organic food. There is a market in Schwyz on the main square every Saturday morning (until approximately 11.30am) and smaller markets are held in local towns. Lucerne has a fantastic market

on Tuesdays and Saturdays along by the river. Zurich also has an excellent market on Saturdays on the “Bürkliplatz”, close to the lake. Come along and have a look at what’s on offer – everything from flowers and farmer’s produce, fresh bread to second hand clothes and antiques.

Furniture Shopping

There are an abundance of places to buy furniture. For in and around Freienbach, Wollerau, as well as Lucerne, Zug and Zurich try:

Tivoli Spreitenbach near Zurich – which you can reach in roughly 40 minutes from Pfäffikon by car. There is an IKEA here and along the road in the shopping centre there is a “Möbel Pfister” and “FLY”. There is also a Migros DIY and an abundance of other shops. You will find everything you need around here. Come for the day and take your time. Wohncentre Emmen”, just off the motorway to Lucerne which houses a “Möbel Pfister”, “Top Tip” and a “Lumimart” for lights. There is also a Coop DIY – and this is all under one roof! Just along the road there is also another shopping centre.

“Emmen Centre” which houses a big “Manor”, a small “FLY” and many other shops for accessories. If you prefer not to drive so far, try “Möbel Gallati” or “Teo Jakob” in Baar-Sihlbrugg – both offer furniture of a very modern style – so if you prefer the country look, it won’t be for you. The “Top Tip” in Steinhausen is good for the odd piece you may need – it’s cheap and cheery and there is a big Coop DIY underneath. There is also the Migros furniture shop here in the Wädenswil Zürisee Centre called “Micasa” which offers furniture at very reasonable prices.

FOREIGN ONLINE SHOPPING

BOFROST.CH
BRITSHOP.CH
MYEXPATSHOP.COM
DUTCHSTORE.CH
THE-BRITISH-SHOP.CH



MADE IN SWITZERLAND
LABEL

Shopping

Furniture

Möbel Pfister, Wohncentre Emmen
Seetalstr. 50, 6020 Emmenbrücke
Tel: 041 418 6868, www.pfister.ch

FLY, Wohncentre Emmen
Seetalstrasse 50, Emmen
🌐 emmencentre.ch

Möbel Gallati
Sihlbruggstrasse 154,
6340 Baar-Sihlbrugg
Tel: 041 766 1166
🌐 moebel-gallati.ch

Top Tip
Zürcherstrasse 104, 8852 Altendorf
Tel: 055 451 7585,
🌐 toptip.ch

Micasa
Wädenswil Zürisee Centre
Rütistrasse 1, 8820 Wädenswil
🌐 micasa.ch

IKEA
Müslistrasse 16 (Zurich)
8957 Spreitenbach
Tel: 0848 801 100,
🌐 ikea.com



Möbel Egger
Luzernstrasse 101
6274 Eschenbach/Luzern
Tel: 041 449 40 40
🌐 moebelegger.ch

Teo Jakob AG
Sihlbruggstrasse 114
6340 Baar-Sihlbrugg
🌐 teojakob.ch

Electrical Goods

Media Markt
Zurich Sihlcity, Kalandersplatz 1
8045 Zurich
🌐 mediamarkt.ch

Fust
In Seedamm Centre, Pfäffikon
Gwattstrasse 11, 8808 Pfäffikon
Tel: 055 415 66 50,
🌐 fust.ch

Interdiscount
In Seedamm Centre, Pfäffikon
Gwattstrasse 11, 8808 Pfäffikon
Tel: 055 410 35 40
🌐 interdiscount.ch



Lamps

Lumimart
Zürcherstrasse 104
8852 Altendorf
Tel: 055 451 75 85
🌐 lumimart.ch

Micasa
Wädenswil Zürisee Centre
Rütistrasse 1, 8820 Wädenswil
🌐 micasa.ch

Curtains

Doswald
Gotthardstrasse 20, 6300 Zug
Tel: 041 711 33 53
🌐 doswald-ag.ch

Deco Wohnatelier
Seeblick 1, 6330 Cham
Tel. 041 781 43 03
🌐 deko-wohnatelier.ch

International Clubs and Societies

Ask your local council for a list of the clubs or Vereine in your town if you would like to get to know some people either locals or expats. Many clubs of various interest groups can be found in larger cities close by, especially in Zürich. Here are a few of the main ones.

Zug International Women's Club
🌐 ziwc.ch

Toastmasters Zug and Zürich
🌐 toastmasters.org

International Parents and Kids Club
🌐 ipkc.ch

International Men's Club of Zug
🌐 imcz.com

English Theatre Group of Zug
🌐 etgz.ch

English-Speaking Club of Zürich
🌐 escz.ch

Anglo-Swiss Club Lucerne
🌐 asc-lucerne.ch

American Women's Club of Zürich
🌐 awczurich.org

American international Club of Zürich
🌐 aicz.ch

British Residents' Association of Switzerland
🌐 britishresidents.ch

Zürich International Women's Association
🌐 ziwa.com

International Ski Club of Zürich
🌐 iscz.org

Swiss American Society, Lucerne
🌐 sas1.swiss.ch

Zürich English-Speaking Theatre
🌐 thezest.ch

Professional Women's Group, Zürich
🌐 pwg-zh.com

International Women's Club of Lucerne
🌐 iwcl.net

Harvard Club of Switzerland
🌐 hcswitzerland.clubs.harvard.edu

Rugby Club
🌐 suisserugby.com

Rugby Club Zug
🌐 zugrugby.ch

Rugby Club Lucerne
🌐 rcl.ch

Women's Activity Club
🌐 wac.ch



Festivities in and around Schwyz

"KLAUSJAGEN"
IN KÜSSNACHT



"SENNENCHILBI"
IN SCHWYZ

Public holidays in Switzerland are defined on a cantonal basis and therefore differ slightly from canton to canton. The more catholic cantons (such as Schwyz, Zug & Lucerne) get a few more holidays than protestant cantons (i. e. Zürich)!

For information about regional holidays please refer to your HR department or your school's office.

See more at:

🌐 schwyz-tourismus.ch



Places of Interest

Introduction

Schwyz offers a wide variety of leisure activities for beautiful sunny days as well as rainy days. There are also many options for winter activities, such as skiing, snowshoe walking and others more.

Einsiedeln

The Monastery in Einsiedeln has a one thousand-year-old history and the Abbey dates back to the 18th century. It's well worth a visit to see the impressive baroque interior, guided tours are offered. Aside from the "Black Madonna", Einsiedeln is home to Diorama Bethlehem, which is the biggest nativity display in the world with over 450 hand-carved figures, a cheese factory (Milchmanufaktur), gingerbread museum and close by, the family-friendly ski area Hoch Ybrig. 🌐 eyz.swiss

Brunnen and Schwyz

Swiss army knives are perhaps one of the most famous Swiss products globally and it so happens that the original producer - Victorinox - has its factory and visitor centre in Brunnen. With its emblem closely resembling the Swiss flag. A visit here can make a great day trip. You can combine it with a cruise on Lake Lucerne or a hike nearby. We also recommend an a historical trip to the capital town of Schwyz to visit the local museums, like the Museum of the Swiss Charters of Confederation (Bundesbriefmuseum), housing the Swiss Confederation's founding documents from 1291 or the Forum Schweizer Geschichte, highlighting the early history of the Swiss Confederation. A fun and interesting trip for the whole family!

Sattel Hochstuckli

Take the rotating cable car up to the top to "Mostelberg" and let the children run around. There is a great children's play area in summer - buy a ticket at the bottom - for the "Stuckli Jump" with bouncy castle and trampolines galore. You can also walk along the road back to "Herrenboden", where there is another great restaurant with a playground and a zoo. Alternatively, take the panoramic hike to "Engelstock" and have a barbecue at one of the barbecue spots along the way. A new attraction is the hanging bridge - 51m above the ground at its highest point - good luck with crossing that one. Enjoy beautiful panoramic views of the mountains and of Aegeri. 🌐 sattel-hochstuckli.ch.

Tierpark Goldau

A lovely animal park, where you can have a long walk and feed the roaming deer. It is also possible to take a picnic and grill something at one of the well-equipped barbeque areas. There is also a café and a nice playground for the children and it is great at all times of the year, come rain or shine! 🌐 tierpark.ch

Tierpark Langenberg, Langnau am Albis (ZH)

This is a zoo with no entrance charge. It is about half an hours drive from Zug, an hour from Lucerne, 20 minutes from Zurich. You don't see a huge amount of animals, but it is still worth a visit and you can have a relaxing walk around the grounds and let the children play in the wonderful playground. There are deer, bears and wolves to name but a few. You can either take a picnic, grill sausages at an appointed barbeque spot or have lunch in the café.

LINK
SCHWYZ-TOURISMUS.CH



SATTEL HOCHSTUCKLI



TIERPARK GOLDAU

Places of Interest

Mount Rigi

This is an absolute must – the views from Rigi really are second to none. Take the train from “Goldau” to “Rigi Kulm” (1’800m) and you’ll be nearly at the summit. There is a hotel and restaurant up there and you can walk down to the next station to “Rigi Kaltbad” and then either take the same train back down to “Goldau” or take the cable car down to “Weggis” and then the boat to Lucerne (summer only) and back home by train. Book your ticket for this at the railway station in Schwyz. Whatever you choose, you’ll have a great day out and Rigi really is an all year round mountain. Just don’t go when it’s foggy at the top, because the views are amazing. 🌐 rigi.ch

Mount Pilatus

Take the world’s steepest cog train from Alpnachstad (near Lucerne) or the cable car from Krienseregg to the Pilatus Kulm (2’132m). Enjoy the panoramic views with a restaurant at the top. At Fräkmüntegg (1’416m) there is a summer sledge run for the children – the longest in Europe – a playground and a rope park, as well as a picnic area. 🌐 pilatus.ch

Rapperswil

This is actually one of our personal favourite little towns in Switzerland. It is about a 15 minute drive through the lake from Pfäffikon. If arriving by car, simply park in one of the car parks in the town and stroll around the old town and harbour. Visit the castle on top of the hill and maybe have an ice cream or lunch in one of the many quaint little cafés. Rapperswil has a very Mediterranean atmosphere – it’s just like being in Italy! www.rapperswil.ch

Knies Children’s Zoo, Rapperswil

Just 5mins away from the town there is a great kid’s zoo – it is run by the Knie family who are a famous circus family here in Switzerland. It’s not too big, so it’s great for younger children – there are lots of animals to see – a fantastic seal show, horse rides, elephant rides and playgrounds all around, as well as a café for lunch. 🌐 knieskinderzoo.ch

Weggis

Situated on the lake Lucerne, Weggis is a little gem of a town. It may be well known for the fact that the Brazilian football team prepared themselves here for the World Cup in 2006! But, if you fancy a change of scenery, take a drive to Weggis, have a stroll along the lakeside and sit in one of the many cafés or restaurants. In summer there are sometimes bands playing in the town. If you fancy a swim, there is a nice Lido in Weggis. 🌐 weggis.ch

Zurich Zoo

Drive to Zurich and follow the signs for the zoo. A great family day out and don’t forget to visit the Masoala Hall – a rain forest treat. There are wonderful playgrounds and a café for lunch. 🌐 zoo.ch

Glass Factory, Hergiswil

This is excellent fun if your children are a bit older – not ideal for toddlers. It is about half an hour’s drive from Schwyz, an hour from Zurich, 20mins from Lucerne. By car, pass Lucerne and keep going on the motorway, take the exit to Hergiswil and follow the signs. There is a museum explaining the history of glass blowing in Switzerland – ask for the English tape – and then you can visit the factory

floor itself. Afterwards you can sit by the lake in yet another café or go and spend your money in the shop. There is a seconds shop (slightly cheaper) just across the main road opposite the museum – it’s well worth popping in here! 🌐 glasi.ch

Hölloch Caverns Muotathal

Here you will find some of the most amazing caves. It is advisable to take a guided tour and sturdy footwear, as these are the largest cave formations in Western Europe (over 200km long), so you can easily get lost! But it’s worth a day trip.

If you feel like a day out further afield, here are our suggestions:

Lake Klöntal, Canton Glarus

It takes about an hour to drive there from Zug and Zurich. You drive to Netstal, Canton Glarus and then follow the signs up to the Klöntalersee. It is a breathtaking mountain lake – turquoise in colour – but rather cold! You can make your own fire and grill sausages on sticks by the lake on the left hand shore. You can also walk along the lake on this side – it takes more than an hour – it is an amazing walk – and then you can take the post bus back to your car. There is a nice restaurant by the campsite at the far end of the lake to recharge your batteries, once you have finished your walk. Alternatively, you can leave your car in the town of Glarus and take the post bus from the railway station up to the Klöntal – every child should experience a ride on a Swiss post bus because of its beeping horns (Dee Da Doh Postauto!) – walk along the edge of the lake and then take the bus down again. It is an enchanting place – nature at its very

best – not to be missed. Be sure to go in summer for maximum pleasure.

Braunwald, Canton Glarus

This is a car-free mountain village. Take the cable train up to the village. You can ski here in the winter and in the summer you can go for many lovely mountain hikes and just enjoy the breathtaking views. 🌐 braunwald.ch

The Rheinfall, Schaffhausen

This is one of Switzerland’s magnificent sites – cascading waterfalls – just outside the centre of Schaffhausen. You can even take a boat ride beneath the waterfalls themselves. Schaffhausen town is well worth a visit, too. There is an old fortress up above the town and the views of the Rhein and the town are lovely. 🌐 schaffhausen.ch

Constance, Lake Constance

If you feel like a day out in Germany, then drive to Constance on Bodensee. It is a beautiful southern German town, just across the border and the lake is the largest in Europe. (Don’t forget to take your passports or ID with you, just in case). It takes about an hour and a quarter/half to drive there from Zug, two hours from Lucerne and one hour from Zurich. It is a lovely small town with a fair amount of boutique type shops to while away the day in. There is a main square and a nice quayside. From Constance you can take a boat across to Meersburg and have a look around there too. There is also a large Sealife Centre in the town for the children, so it’s a nice place to spend the day or treat yourselves to a weekend away.

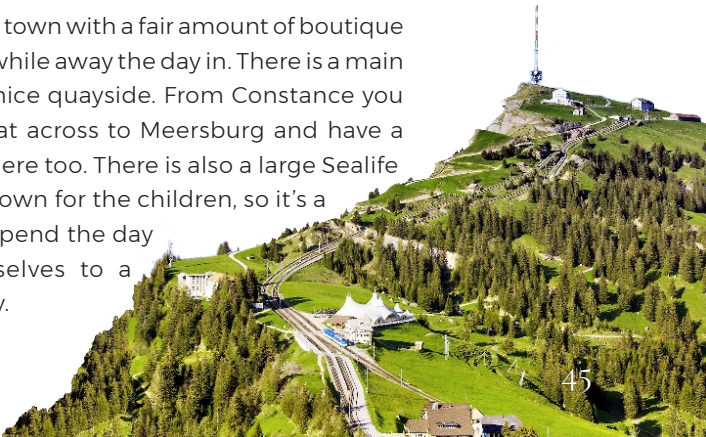
LINKS

RIGI.CH
PILATUS.CH
KNIESKINDERZOO.CH
RAPPERSWIL.CH
WEGGIS.CH
ZOO.CH
GLASI.CH
BRAUNWALD.CH
SCHAFFHAUSEN.CH
BRAUNWALD.CH



PILATUS

MOUNT RIGI



Places of Interest

Mount Titlis, Engelberg

This is an all-year-round destination. You can even ski here on the glacier in the summer. The trip to the summit takes about 40mins – first you take a gondola, then change to a rotating cable-car to the summit at 3'020m. The panoramic views are truly exhilarating. There is a glacier grotto and you can walk inside and touch the walls or you can simply enjoy the views from the comfort of the restaurant. The town of Engelberg itself is also worth looking around. In winter it is a bustling ski resort and in summer you can have a browse around the many souvenir shops and simply enjoy the fresh air. 🌐 titlis.ch

Excursions with Children

Switzerland is very much an outdoor place. When the sun is shining there is an endless abundance of things to do and places to go, but as soon as it rains, the possibilities of what to do, diminish. Nevertheless, here are some suggestions of how to occupy your children should it pour:

Alpamare, Pfäffikon

This is a ideal destination for older children. There are some gentle and some breathtakingly wild water slides, heated outdoor pools to relax in (for the adults) a wave pool and wellness areas. Children who love crazy water slides will love it here – it isn't suitable or recommended for smaller children or toddlers. 🌐 alpamare.ch

Swiss Holiday Park, Morschach

This is a fantastic sports complex with a lovely swimming area. You can just go to have a swim

or you can combine with some other sports. The swimming area has got indoor pools and a heated outdoor pool. There is a new baby playing area for little ones and a slide for the more adventurous children. Just lie in the outdoor pool and take in the wonderful panorama – it's fantastic. Otherwise you can play badminton, tennis, squash, billiards or snooker, table tennis, minigolf, go indoor climbing or bowling. www.swissholidaypark.ch to keep you occupied.

IMAX Cinema, Verkehrshaus Lucerne

Go and watch a 3D film on a big screen and treat the children – the films are mostly informative ones or about nature and not very long, but it is a great treat for the children! 🌐 imax.ch

Cinema, Schwyz, Zurich or Lucerne

Go to the cinema for an afternoon, especially on those rainy weekends. Although most films shown in Schwyz are in German, Zurich has plenty of options in English, if you don't mind the short trip. Check out the cinemas in Schwyz or Zurich. 🌐 kinoschwyz.ch and 🌐 kinoZurich.ch

Planeta Magic, Wädenswil

A soft indoor play area for smaller children up to about the age of 7 or 8, although up to 12 is allowed. 🌐 planetamagic.ch

Cherry Bowl, Sihlbrugg

This is a bigger bowling centre with many lanes and they provide walls for the children for birthday parties only. 🌐 cherrybowl.ch

Park "Im Gruene" Rüschlikon

Only 20 minutes from Pfäffikon by car, this is the perfect place to let the children let off steam, even if it is raining. In the summer there are donkey rides, a wonderful playground, a small train, a self-service restaurant and for small children, there is a puppet show every Wednesday and Sunday at 3pm during school holidays. 🌐 parkimgruene.ch

Saurier Museum, Aathal

With a giant whale fossil and huge dinosaur footprints, this museum is great fun for the children to get a feel of the Jurassic period. 🌐 sauriermuseum.ch

Paradisimo, Pfäffikon

An indoor play hall for children of all ages. Sheer children's paradise! 🌐 paradisimo.ch

Springding Kinderspielparadies, Reichenburg

An indoor play area in Reichenburg, Canton Schwyz for children aged 1 to 12 years. 🌐 springding.ch

Skiing

There is no shortage of ski stations in Switzerland. Winter is one of the most beautiful times of the year, when the mountains come alive with skiers, snowboarders and sledgers. Fun can be had by all ages. It is advisable to invest in some decent skiing clothing, which is relatively cheap here as it is readily available. It can be very cold in the mountains so buy some proper thermal skiing underwear (e. g., ODLO) and feel the difference. It is important to be warm. Don't forget protection for your eyes too, always take your sunglasses or goggles for the children with UV protection.

Skis for children or adults can be rented for the whole season at most larger sports shops from October onwards. If you have a few children, it may well pay to buy the equipment and pass it down the line – this way you can get slightly better quality skis and boots.

If you are already a good skier and you want to buy some new skis – look for shops or the possibility to test run a pair of skis before you buy them – for example the shops at most larger ski stations offer this facility.

Where to buy skiing equipment:

Ochsner Sport, Seewen Markt shopping centre, Seewen, Schwyz. There is a large selection here at very reasonable prices.

Manor – try the Manor in Zurich for a large selection of skiing equipment at very reasonable prices. Look for well-known makes at discount prices.

Iguana Outlet Shop, Spinnerei Baar (30 minutes from Pfäffikon) – offers good quality German-made ski wear at discount prices.

UVEX Outlet Shop, Reussenstrasse, 6340 Baar. A huge outlet shop with a good selection.

LINKS

TITLIS.CH
ALPAMARE.CH
IMAX.CH
KINOSCHWYZ.CH
KINOZURICH.CH
PLANETAMAGIC.CH
CHERRYBOWL.CH
PARKIMGRUENE.CH
PARADISIMO.CH
SAURIERMUSEUM.CH
PARADISIMO.CH
SPRINGDING.CH

Places of Interest

Here are a few of the closest ski stations for you to try – check out their websites for more detailed info:

Stoos, Canton Schwyz

A family ski resort, where you can either go for the day or take advantage of the morning only or afternoon only cards. stoos.ch

Handgruebi

Which is excellent with small children – 2 or 3 lifts with a good selection of runs for an afternoon of fun. handgruebi.ch

Engelberg

For the more advanced skier. titlis.ch

Braunwald, Canton Glarus

A family ski resort accessible by a small mountain cog train. braunwald.ch

Elm, Canton Glarus

An all-round ski resort for skiers of all abilities. elm.ch

Flumserberg

Can get very busy – but has an excellent selection of runs. flumserberg.ch

Klosters, Canton Graubünden

This is just about doable in a day – the Parsenn skiing area is one of the largest in Switzerland. klosters.ch

Flims, Laax, Falera

There is a glacier here so you can ski all year round – a large variety of pistes for all abilities. laax.com

Pizol

A family skiing area. pizol.ch

Klewenalp

A family skiing area. klewenalp.ch

Melchseefrutt

A family ski resort – one of the longest sledge runs too! melchseefrutt.ch

Andermatt, Canton Uri

There are three different ski areas available here. The Gemstock is for more advanced skiers. Nätschen is accessible from the village by a chairlift and is a sunny skiing region, also good for children. The third area is the Oberalp, which is a large skiing area and reachable by mountain train from the main railway station in Andermatt. There is a wide variety of skiing here. The train journey is also spectacular and great with the children. If you don't want to ski, just go and have lunch and enjoy the breathtaking panorama and mountain train ride. If you enjoy sledging, take the train up one stop to Nätschen and sledge down the road to the village – it is a long gentle sledge run along the road and so perfect for small children and even babies! ander matt.ch

Public Holidays

Public holidays in Switzerland are defined on a cantonal basis and therefore differ slightly from canton to canton. The more catholic cantons (such as Schwyz, Zug & Lucerne) get a few more holidays than protestant cantons (i.e. Zürich)! For information about regional holidays please refer to your HR department or your school's office.

USEFUL LINK
[FEIERTAGSKALENDER.CH](https://feiertagskalender.ch)

January 1	New Year's Day
January 6	Three Kings Day
March 19	St. Joseph's Day
March 30	Good Friday
April 2	Easter Monday
April 16	Spring Festival (ZH only)
May 1	Labour Day
May 10	Ascension Day
May 21	Whit Monday
August 1	Swiss National Day
August 15	Assumption Day
September 16	Swiss Federal Fast
December 8	Immaculate Conception
December 25	Christmas Day
December 26	St Stephens Day

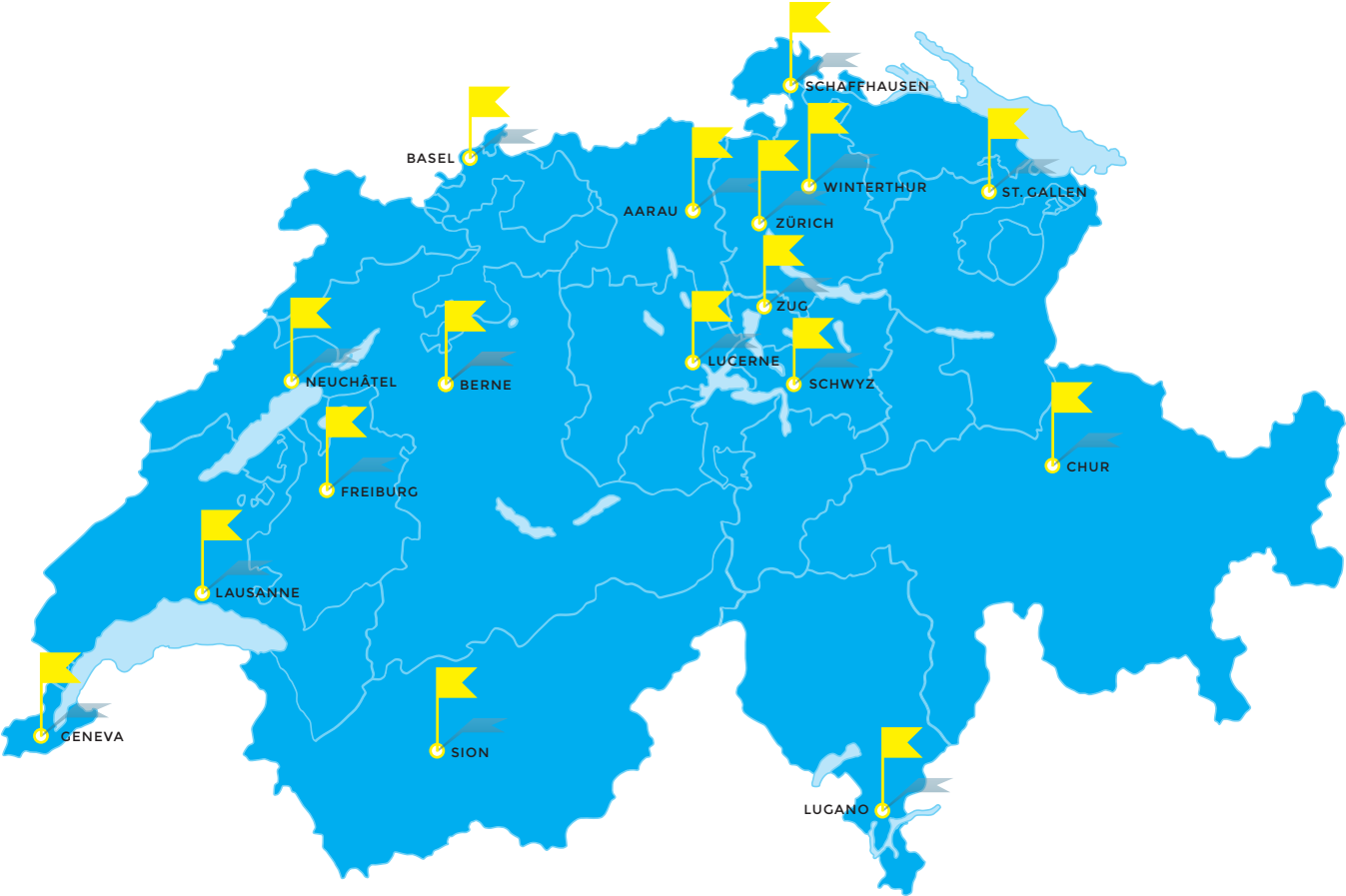
Neujahrstag
Dreikönigstag
St. Joseph Tag
Karfreitag
Ostermontag
Sechseläuten
Tag der Arbeit
Auffahrt
Pfingstmontag
Nationalfeiertag
Maria Himmelfahrt
Betttag
Maria Empfängnis
Weihnachten
St. Stephan



DREIKÖNIGSKUCHEN
THREE KINGS DAY CAKE



Switzerland-wide Coverage by Prime Relocation



PUBLISHER PRIME RELOCATION GMBH
CONCEPT & DESIGN ANDRES GYSSLER
PRODUCER PRINTIMO AG

© PRIME RELOCATION 01 | 2024



FEELING AT HOME IN
CANTON SCHWYZ

Prime Relocation GmbH

Industriestrasse 47
CH-6300 Zug
Switzerland

T +41 41 760 74 41
info@primerelocation.ch
www.primerelocation.ch



PROUD HOLDER OF THE
EURA QUALITY SEAL PLUS
SINCE 2016



FULL MEMBER OF EURA,
THE EUROPEAN RELOCATION
ASSOCIATION



PRIME RELOCATION IS A
PROUD MEMBER OF HARMONY
RELOCATION NETWORK